



Contact: April Williams
Office: 501-470-5290
Mobile: 501-504-4600

SIDEWALK TRIP HAZARD REPAIR PROPOSAL:



City of
Conway Arkansas
City of Colleges

**City of Conway:
Davis and Robinson**



Presented to: B. Finley Vinson
August 2020

The information in this proposal is confidential, and is to be used only by the intended recipient and Precision Safe Sidewalks in evaluating the project. Any copying or unauthorized disclosure of this information is prohibited.



COMMITMENT SUMMARY

COST SAVINGS

We'll repair your sidewalks for 50-90% less than sidewalk replacement, which means you can do more for your residents for less.

A.D.A. COMPLIANCE

Patented technology that brings sidewalks into ADA compliance.

CLEAN

Our patented containment system captures dust and debris to bring you the cleanest process available.

SAFE

Decrease liability on your pedestrian walkways.

DETAILED REPORTING

We track our jobs with honesty and integrity. Invoices show measurements, locations and cost for each hazard.

LOW IMPACT

Efficient systems with an average removal time of 20 minutes, no sidewalk closures.

FULL SERVICE CONTRACTOR

Complete GIS integration, mapping, etc.

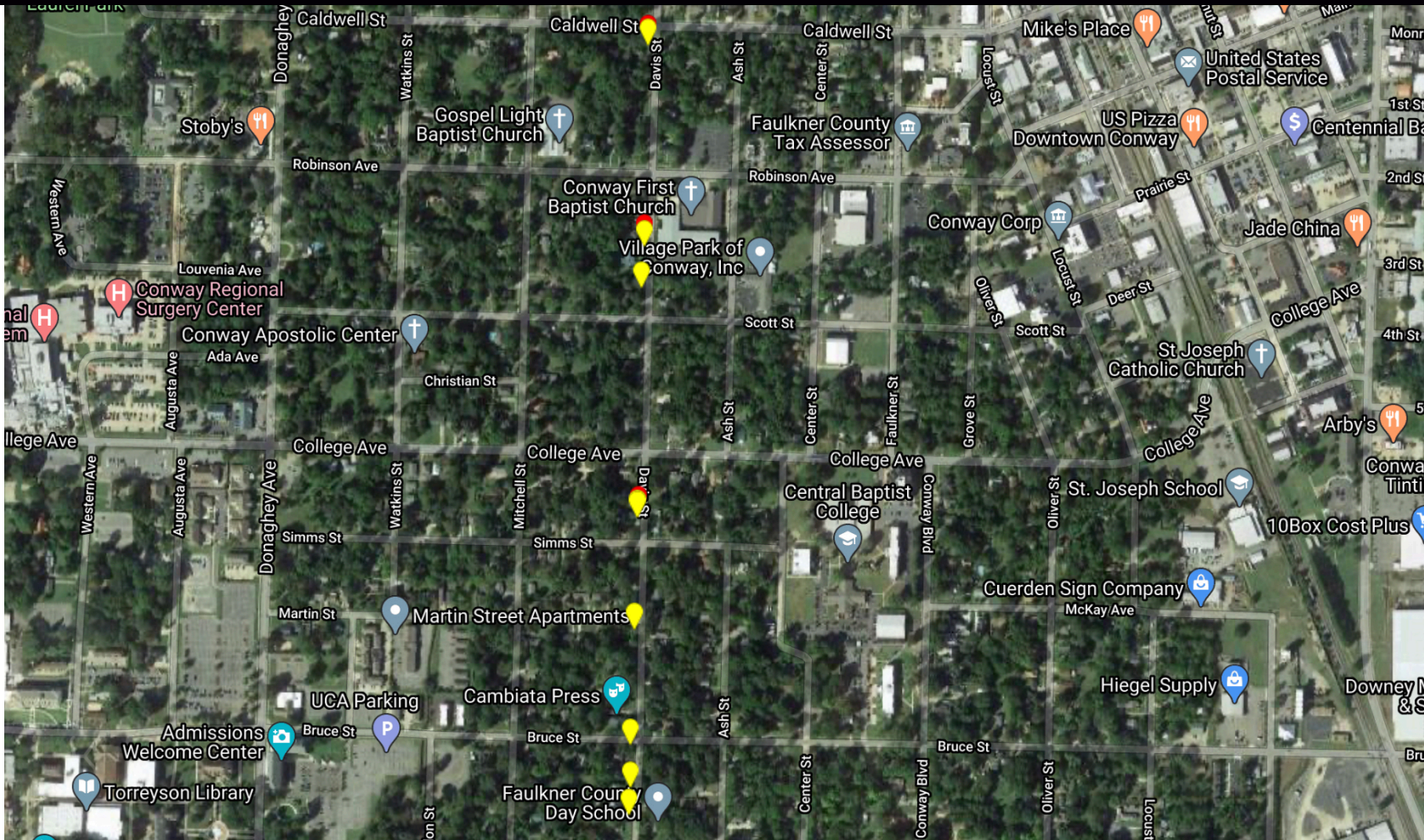


ENVIRONMENTAL IMPACT EXAMPLE: As a member of the U.S. Green Building Council (USGBC) we are proud of the fact that we reduce the impact to landfills and the environment as a result of our service.

Removing and replacing 100 panels would result in approximately 118,500 pounds or 59 tons of concrete being removed (average panel weight of 1185 pounds).

Using Precision Safe Sidewalks for 100 trip hazards results in 0.3 tons of concrete removed and recycled, approximately 141 gallons of gasoline saved, and a reduction of 1.3 metric tons of Co2.

DAVIS STREET

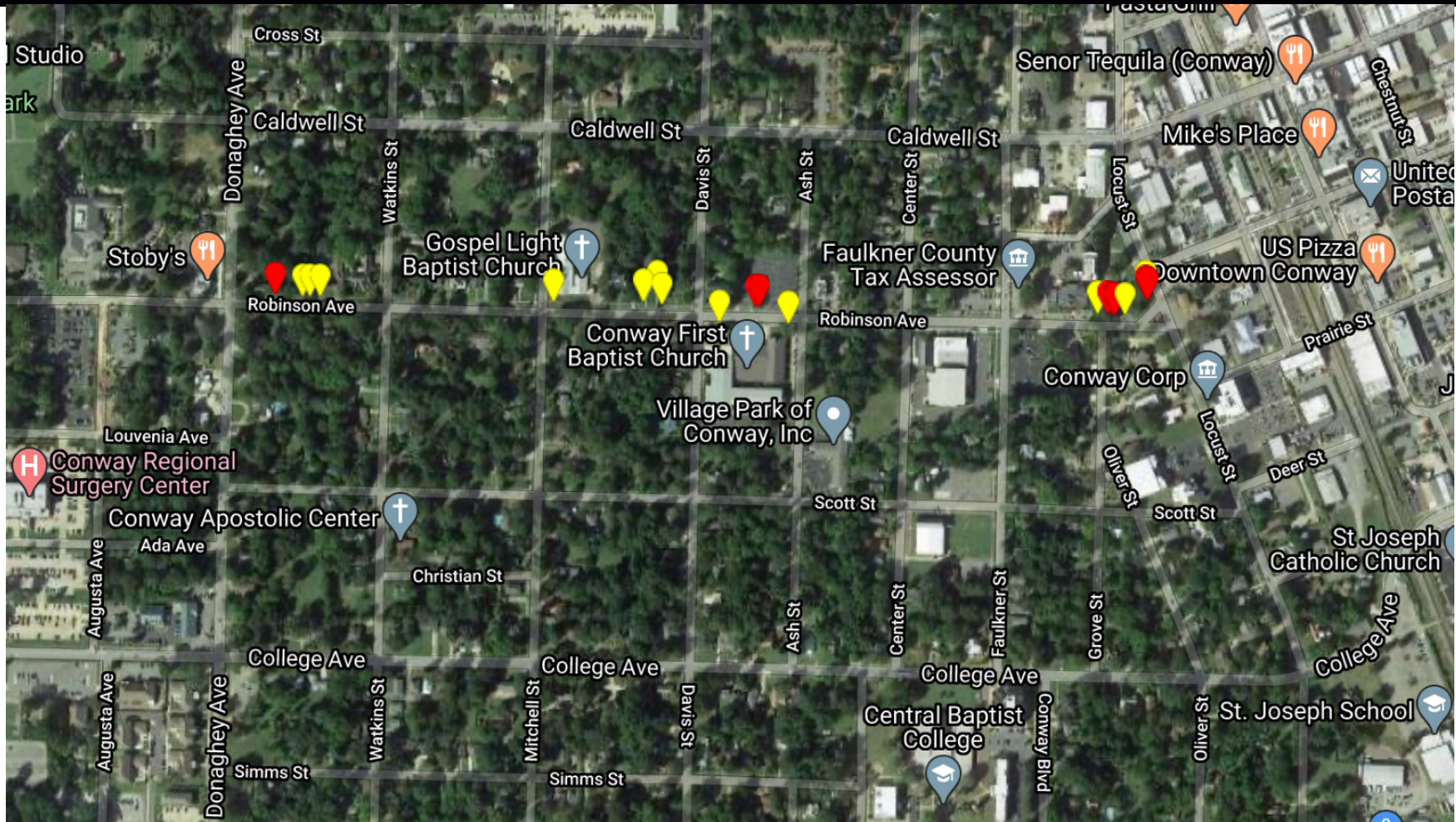


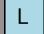




- L : Low Priority Demolish and Replace
- M : Mid Priority Demolish and Replace
- H : High Priority Demolish and Replace

- : 1/2" to 5/8"
- : 3/4" to 2"

The map in this project proposal shows the resolution area for trip hazards in this area of the property. The area has been surveyed for trip hazards for audit and trends. The accuracy of these maps is dependent on smart phone technology available, and should be relied upon as approximations.

ROBINSON AVENUE



- | | | | |
|---|--------------------------------------|---|----------------|
|  L | : Low Priority Demolish and Replace |  | : 1/2" to 5/8" |
|  M | : Mid Priority Demolish and Replace |  | : 3/4" to 2" |
|  H | : High Priority Demolish and Replace | | |

The map in this project proposal shows the resolution area for trip hazards in this area of the property. The area has been surveyed for trip hazards for audit and trends. The accuracy of these maps is dependent on smart phone technology available, and should be relied upon as approximations.



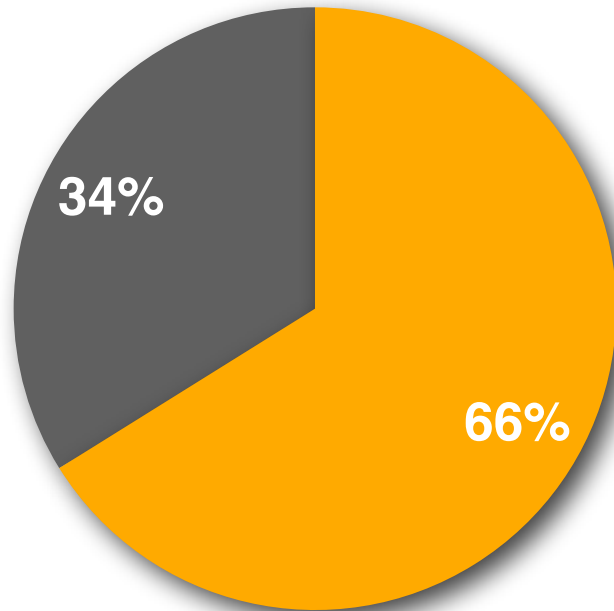
PROPOSED OPTION

Proposed Option Details

- 1:12 Ratio Slope
- Complete Clean Up & Recycle
- Dust Abatement System
- Detailed Audit-able Invoice
- All Hazards **1/2"** to **2"** Repairable by PSS methods
- Total time: 1-2 days (weather dep.)
- Yellow and Red pins

\$ 3,929.24

Based off **\$ 7.25** cost per square foot to remove and replace a sidewalk panel, we estimate the following:



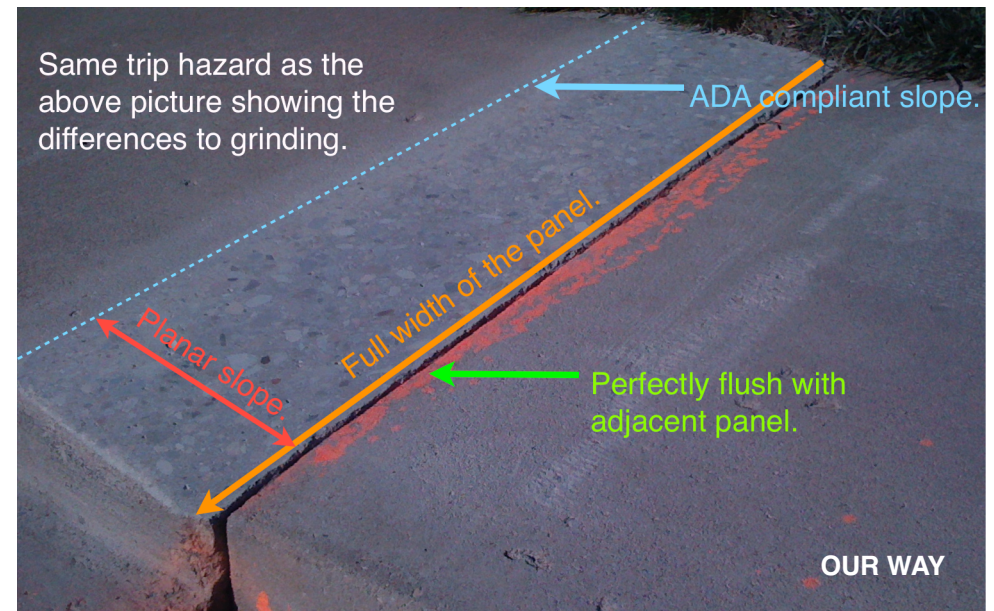
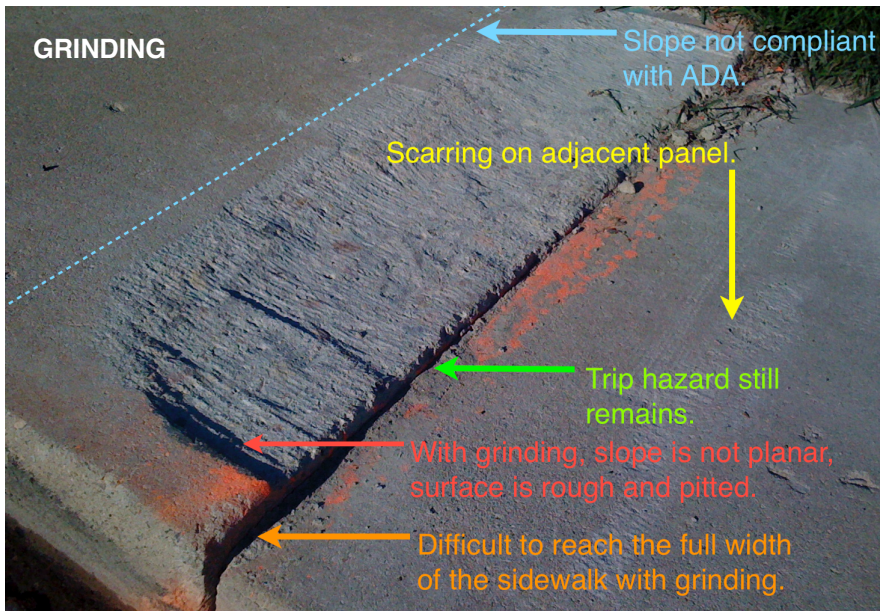
● SAVINGS ● PSS Cost

Cost Comparison

Total Trip Hazard Repairs	32
Cost Using D&R	\$11,600
Cost Savings with PSS	-\$7,670.75
<hr/>	
Cost Using PSS	\$3,929.25

THE PRECISION SAFE SIDEWALKS DIFFERENCE

Our patented technology and innovative sidewalk repairs process leaves you with a beautiful, smooth surface that is ADA compliant - a result you can't get with grinding. Plus, our method saves you money!





PRECISION SAFE SIDEWALKS REPAIRS



The information in this proposal is confidential, and is to be used only by the intended recipient and Precision Safe Sidewalks in evaluating the project. Any copying or unauthorized disclosure of this information is prohibited.