

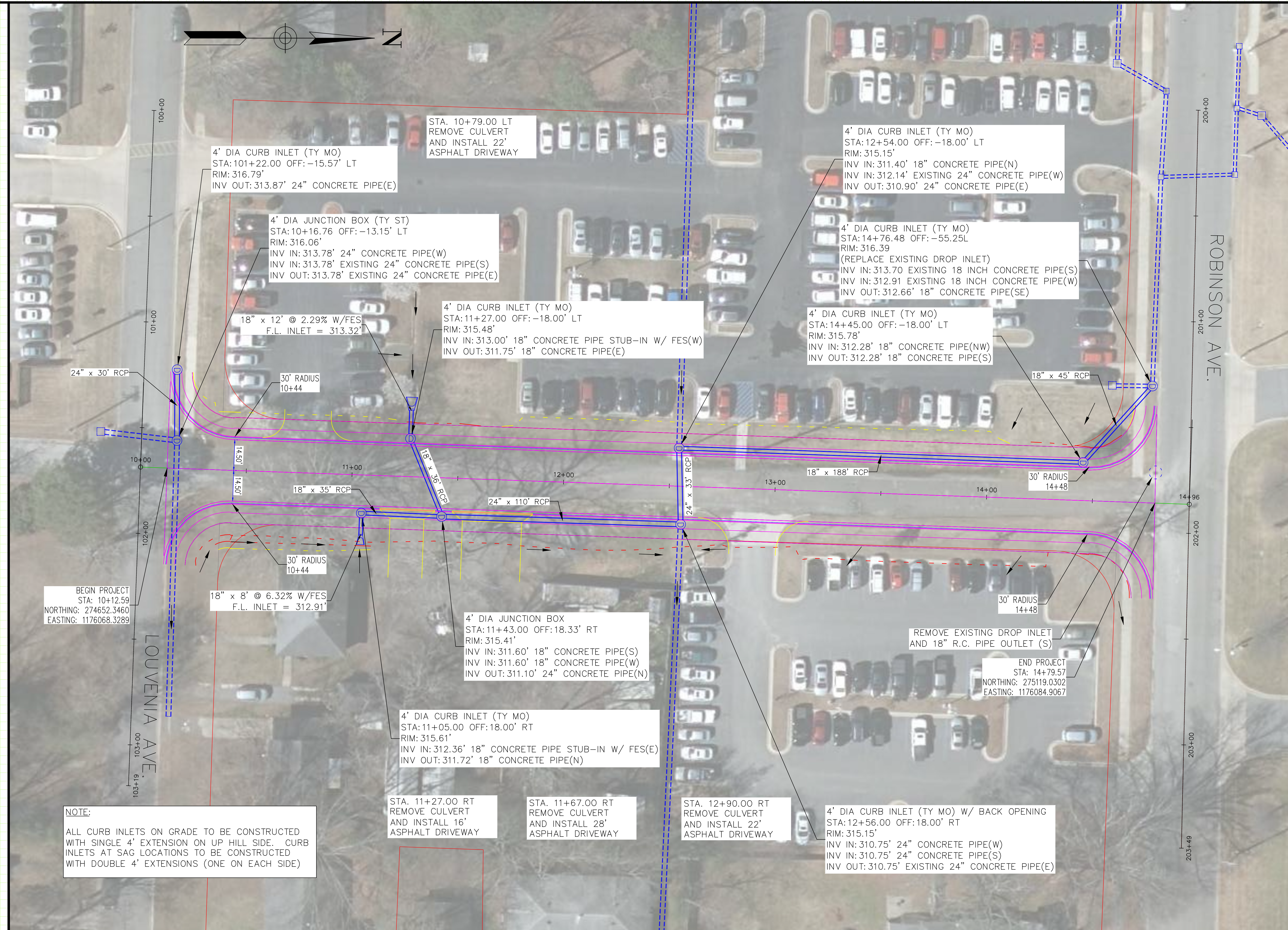
REVISIONS

NO.	DESCRIPTION	DATE

**AUGUSTA AVENUE
IMPROVEMENTS
CONWAY, ARKANSAS**

JOB NUMBER: 18-103
DRAWN BY: MHW1
CHECKED BY: BFV3
DATE: 8/14/2018
SCALE: 1"=20'

PLAN SHEET



ROBINSON AVE.

LOUVENIA AVE.

BEGIN PROJECT
STA: 10+12.59
NORTHING: 274652.3460
EASTING: 1176068.3289

END PROJECT
STA: 14+79.57
NORTHING: 275119.0302
EASTING: 1176084.9067

NOTE:
ALL CURB INLETS ON GRADE TO BE CONSTRUCTED WITH SINGLE 4' EXTENSION ON UP HILL SIDE. CURB INLETS AT SAG LOCATIONS TO BE CONSTRUCTED WITH DOUBLE 4' EXTENSIONS (ONE ON EACH SIDE)

STA. 11+27.00 RT REMOVE CULVERT AND INSTALL 16' ASPHALT DRIVEWAY

STA. 11+67.00 RT REMOVE CULVERT AND INSTALL 28' ASPHALT DRIVEWAY

STA. 12+90.00 RT REMOVE CULVERT AND INSTALL 22' ASPHALT DRIVEWAY

4' DIA CURB INLET (TY MO)
STA: 101+22.00 OFF: -15.57' LT
RIM: 316.79'
INV OUT: 313.87' 24" CONCRETE PIPE(E)

4' DIA JUNCTION BOX (TY ST)
STA: 10+16.76 OFF: -13.15' LT
RIM: 316.06'
INV IN: 313.78' 24" CONCRETE PIPE(W)
INV IN: 313.78' EXISTING 24" CONCRETE PIPE(S)
INV OUT: 313.78' EXISTING 24" CONCRETE PIPE(E)

18" x 12' @ 2.29% W/FES
F.L. INLET = 313.32'

4' DIA CURB INLET (TY MO)
STA: 11+27.00 OFF: -18.00' LT
RIM: 315.48'
INV IN: 313.00' 18" CONCRETE PIPE STUB-IN W/ FES(W)
INV OUT: 311.75' 18" CONCRETE PIPE(E)

4' DIA CURB INLET (TY MO)
STA: 12+54.00 OFF: -18.00' LT
RIM: 315.15'
INV IN: 311.40' 18" CONCRETE PIPE(N)
INV IN: 312.14' EXISTING 24" CONCRETE PIPE(W)
INV OUT: 310.90' 24" CONCRETE PIPE(E)

4' DIA CURB INLET (TY MO)
STA: 14+76.48 OFF: -55.25L
RIM: 316.39
(REPLACE EXISTING DROP INLET)
INV IN: 313.70 EXISTING 18 INCH CONCRETE PIPE(S)
INV IN: 312.91 EXISTING 18 INCH CONCRETE PIPE(W)
INV OUT: 312.66' 18" CONCRETE PIPE(SE)

4' DIA CURB INLET (TY MO)
STA: 14+45.00 OFF: -18.00' LT
RIM: 315.78'
INV IN: 312.28' 18" CONCRETE PIPE(NW)
INV OUT: 312.28' 18" CONCRETE PIPE(S)

4' DIA JUNCTION BOX
STA: 11+43.00 OFF: 18.33' RT
RIM: 315.41'
INV IN: 311.60' 18" CONCRETE PIPE(S)
INV IN: 311.60' 18" CONCRETE PIPE(W)
INV OUT: 311.10' 24" CONCRETE PIPE(N)

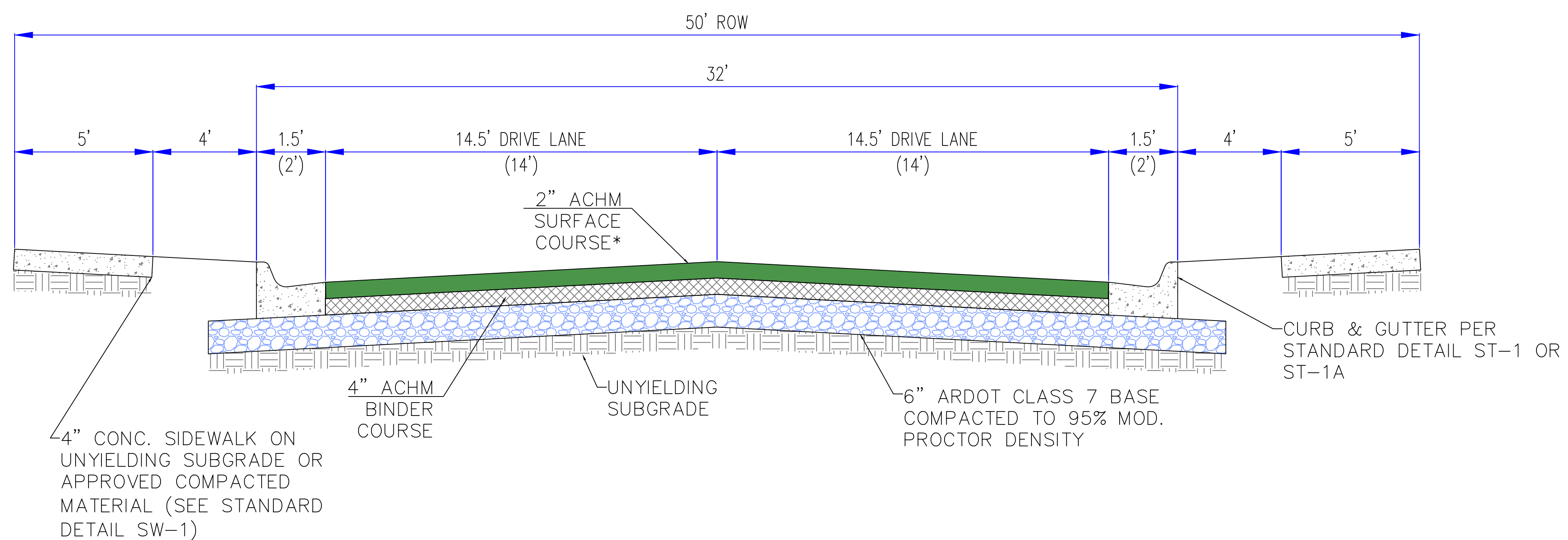
4' DIA CURB INLET (TY MO)
STA: 11+05.00 OFF: 18.00' RT
RIM: 315.61'
INV IN: 312.36' 18" CONCRETE PIPE STUB-IN W/ FES(E)
INV OUT: 311.72' 18" CONCRETE PIPE(N)

REMOVE EXISTING DROP INLET AND 18" R.C. PIPE OUTLET (S)

4' DIA CURB INLET (TY MO) W/ BACK OPENING
STA: 12+56.00 OFF: 18.00' RT
RIM: 315.15'
INV IN: 310.75' 24" CONCRETE PIPE(W)
INV IN: 310.75' 24" CONCRETE PIPE(S)
INV OUT: 310.75' EXISTING 24" CONCRETE PIPE(E)

REVISIONS

NO.	DESCRIPTION	DATE



TYPICAL SECTION
 AUGUSTA AVENUE

**AUGUSTA AVENUE
 IMPROVEMENTS
 CONWAY, ARKANSAS**

JOB NUMBER: 18-103
 DRAWN BY: MHW1
 CHECKED BY: BFV3
 DATE: 8/14/2018
 SCALE: 1"=20'

**TYPICAL
 SECTION**