

2021 PAVEMENT MARKING PROGRAM

LIST OF STREETS

- 1ST AVE
- 3RD AVE**
- 6TH ST
- AMITY RD*
- BILL DEAN DR
- BRUCE ST*
- CALDWELL ST*
- CHESTNUT ST
- CHESTNUT & VAN RONKLE
- CENTER ST
- CENTRAL LANDING BLVD
- COMMERCE AVE*
- COLLEGE/PRINCE **
INTERSECTION
- CONWAY BLVD**
- E GERMAN LN*
- ELSINGER BLVD*
- ENTERPRISE AVE*
- EXCHANGE AVE*
- EXECUTIVE CENTER BLVD
- HALTER RD*
- HANKS FURN. DWY*
- INGRAM ST
- LOCUST ST
- MIDDLE RD
- ROBINSON AVE***
- S AMITY RD
- SOUTH BLVD*
- WATKINS ST

* STREETS STARTED BY FIRED CONTRACTOR WITHOUT OUR AUTHORIZATION AND NOT COMPLETED. (MISSING ARROWS, STOP BARS, TAPERS, HATCHING, CROSSWALKS, ETC.) - REFL. PAINT

** STREET TO BE OVERLAYED IN 2021. DO NOT STRIPE UNTIL OVERLAY IS COMPLETE.

*** ADDING BIKE LANE BUFFER HATCHING ONLY TO EXISTING MARKINGS. (4" WHITE REFLECTORIZED PAINT TO BE USED FOR HATCH MARKS)
SEE EXECUTIVE CENTER DRIVE SHEETS FOR TYPICAL DETAILS.

Figure 1

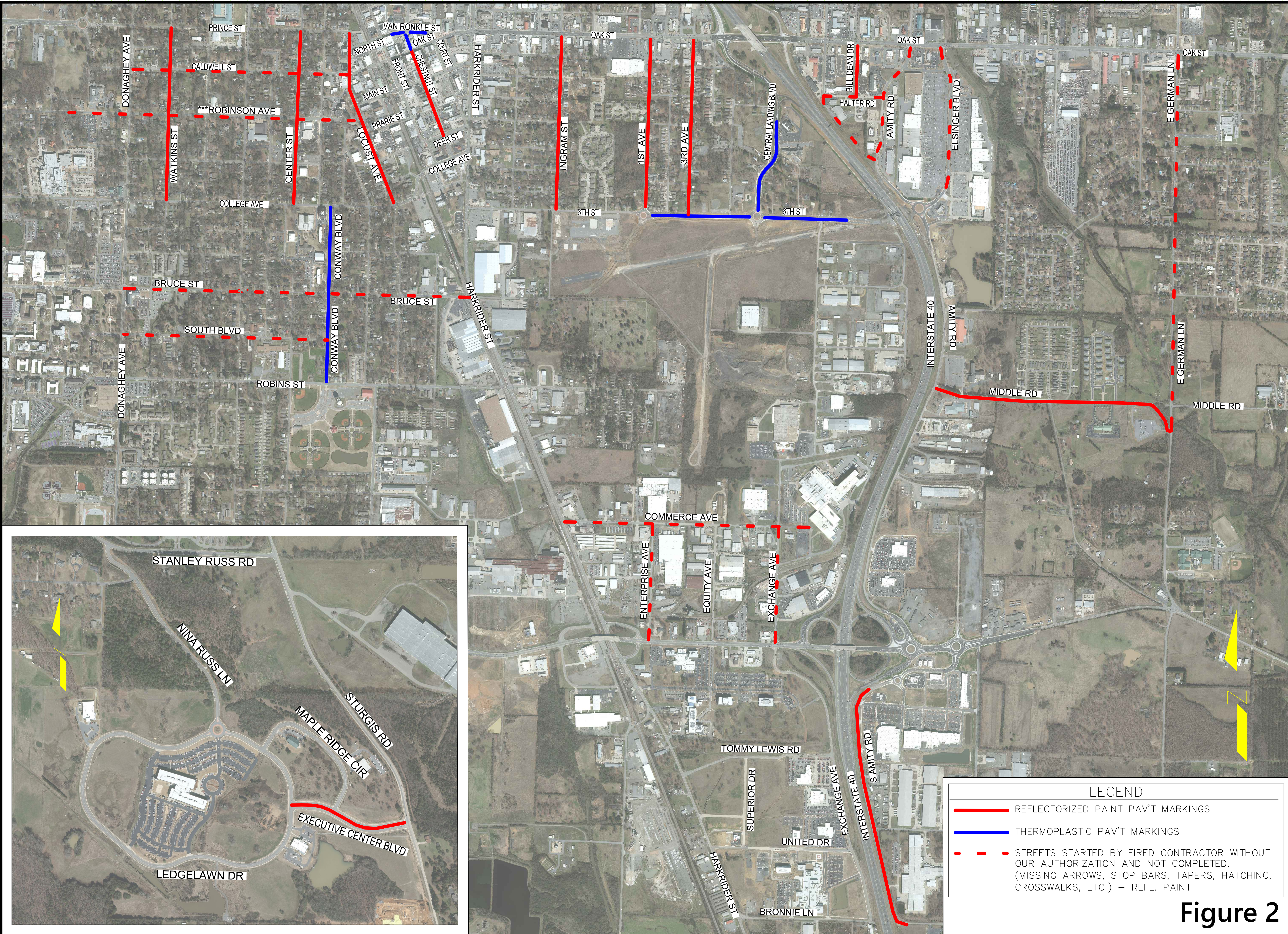
REVISIONS

NO.	DESCRIPTION	DATE

2021 ANNUAL PAVEMENT MARKING PROGRAM
 PLAN SHEETS FOR STREETS REQUIRING LAYOUT
 CONWAY, ARKANSAS

JOB NUMBER: 20-101
 DRAWN BY: MHW1
 CHECKED BY: BFV3
 DATE: 3-20-2020
 SCALE:

2021 PAVEMENT
 MARKING MAP
 (FIGURE 2)



LEGEND

- REFLECTORIZED PAINT PAV'T MARKINGS
- THERMOPLASTIC PAV'T MARKINGS
- - - STREETS STARTED BY FIRED CONTRACTOR WITHOUT OUR AUTHORIZATION AND NOT COMPLETED. (MISSING ARROWS, STOP BARS, TAPERS, HATCHING, CROSSWALKS, ETC.) - REFL. PAINT

Figure 2