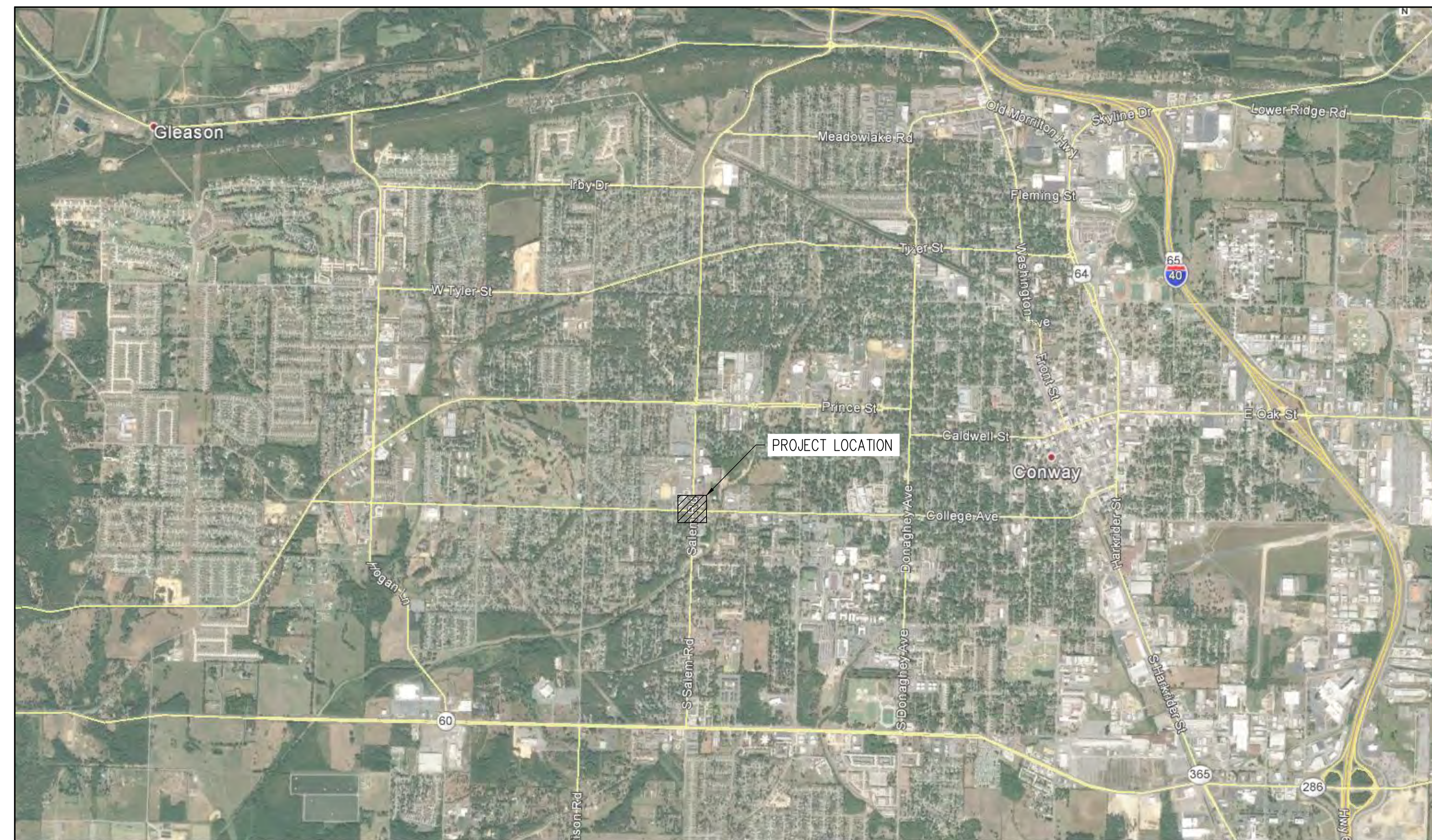


COLLEGE & SALEM ROUNDAABOUT CONSTRUCTION CONWAY, ARKANSAS CONSTRUCTION PACKAGE

VICINITY MAP



N.T.S

DATE: JUNE 14, 2017
JOB#: 16-107

*CONWAY STREET AND ENGINEERING DEPARTMENT
100 E. ROBINS STREET STREET CONWAY, ARKANSAS
PH: 501.450.6165 FAX: 501.513.3566*

INDEX TO DRAWINGS

- C1 COVER SHEET
- C2 EROSION CONTROL PLAN
- C3 TYPICAL SECTIONS & GENERAL NOTES
- C4 PLAN/PROFILE COLLEGE AVENUE
- C5 PLAN/PROFILE SALEM ROAD
- C6 PLAN/PROFILE ROUNDAABOUT
- C7 DIMENSIONING PLAN
- C8 GRADING PLAN
- C9 SIGNAGE & STRIPING PLAN
- C10 MAINTENANCE OF TRAFFIC PLAN
- L1 PLANTING PLAN
- L2 PLANTING & CONSTRUCTION DETAILS
- L3 ROCKWOOD WALL TYPICAL DETAILS
- L4 ROCKWOOD WALL CONSTRUCTION SEQUENCE
- I1 IRRIGATION PLAN
- I2 IRRIGATION DETAILS



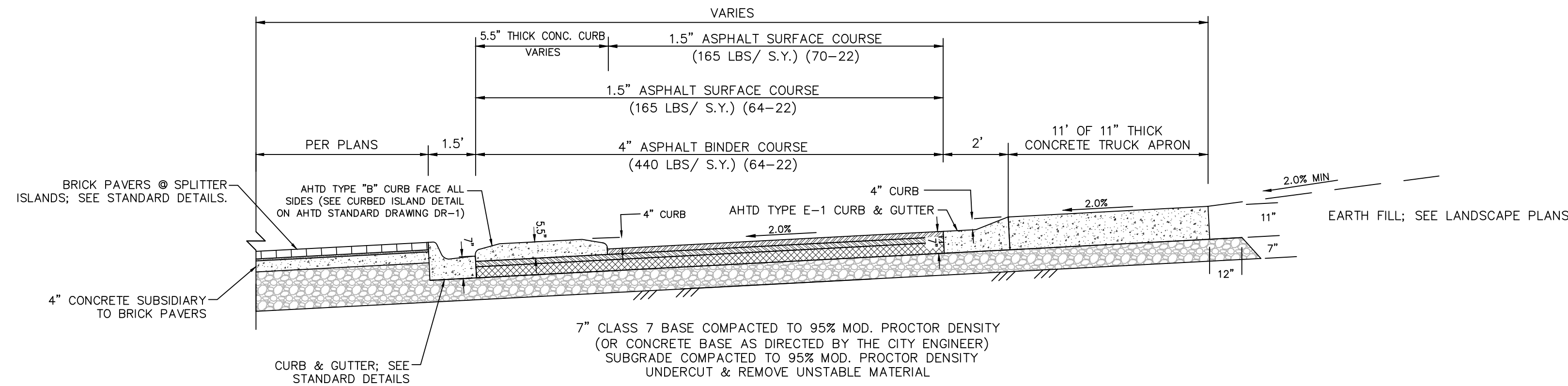
COLLEGE & SALEM ROUNDAABOUT CONSTRUCTION CONWAY, ARKANSAS

No.	Revision/Issue	Date

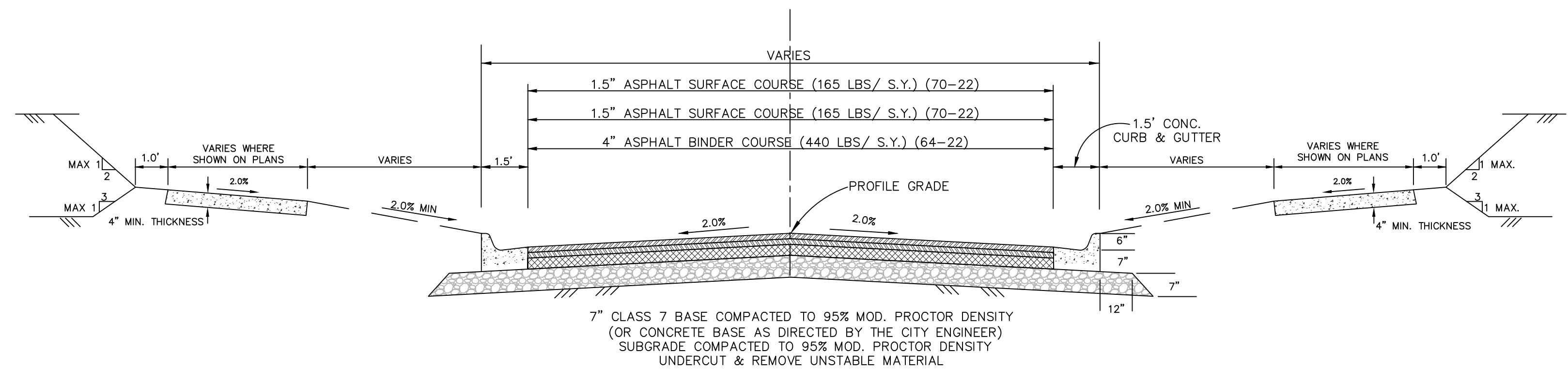
COVER SHEET
JOB NUMBER: 16-107

DRAWN BY: NTR	SHEET #: C1
CHECKED BY: BFV	
DATE: 06/14/17	
SCALE: N.T.S	

COLLEGE & SALEM
ROUNDABOUT CONSTRUCTION
CONWAY, ARKANSAS



TYPICAL ROUNDABOUT SECTION



TYPICAL STREET SECTION

NOTES:

- CITY OF CONWAY STANDARD DETAILS FOR ROADWAY AND DRAINAGE CONSTRUCTION ARE LOCATED ON THE STREET & ENGINEERING DEPARTMENT WEB PAGE.
- ALL CONSTRUCTION & MATERIALS SHALL COMPLY WITH THE ARKANSAS HIGHWAY & TRANSPORTATION DEPARTMENT STANDARD SPECIFICATIONS FOR HIGHWAY CONSTRUCTION, 2014 EDITION, UNLESS OTHERWISE NOTED.
- IRRIGATION SLEEVING SHALL BE INSTALLED PRIOR TO THE PLACEMENT OF ROADWAY BASE COURSE. IRRIGATION DESIGN AND LOCATION INFORMATION SHOULD BE OBTAINED FROM IRRIGATION PLANS, BY OTHERS.
- PAVEMENT SECTION THICKNESS SUBJECT TO CHANGE AT THE DIRECTION OF THE GEOTECHNICAL ENGINEER AND APPROVAL BY THE CITY ENGINEER.
- CONSTRUCT MODULAR BLOCK WALLS IN ACCORDANCE WITH MANUFACTURER SPECIFICATIONS.

SHARED USE PATH REQUIREMENTS:

- ALL WORK SHALL COMPLY WITH SECTION 633 OF THE AHTD STANDARD SPECIFICATIONS.
- EXPANSION MATERIAL SHALL BE REQUIRED AT 50 FT. MAXIMUM SPACING.
 - SHARED USE PATH SHALL HAVE SAW CUT TRANSVERSE JOINTS AT INTERVALS EQUAL TO THE WIDTH OF THE SIDEWALK. **TOOLED JOINTS WILL NOT BE PERMITTED.**
 - EXPANSION JOINT MATERIAL SHALL BE PRE-FORMED ASPHALT IMPREGNATED FIBERBOARD CONFORMING TO AASHTO M-213. EXPANSION JOINT MATERIAL SHALL BE LEFT 1/2" LOWER AND FILLED WITH SILICONE SEALER TO FINISH GRADE.
 - ALL COLD JOINTS AND SAW CUT JOINTS SHALL BE FILLED TO FINISH GRADE WITH JOINT SEALANT.
 - ALL SIDEWALKS SHALL HAVE 1/2" ROLLED EDGES AND BROOM FINISH.
 - SHARED USE PATHS SHALL BE PLACED ON 4" CLASS 7 BASE COMPACTED TO 95% MODIFIED PROCTOR DENSITY.
 - ALL SHARED USE PATHS REQUIRE INSPECTION BEFORE AND AFTER CONCRETE PLACEMENT. SIDEWALKS WILL BE INSPECTED FOR ADA REQUIREMENTS & WORKMANSHIP.

GENERAL CONSTRUCTION REQUIREMENTS:

- THE STREET DEPARTMENT SHALL BE NOTIFIED 24 HOURS PRIOR TO PLACEMENT OF ANY FILL MATERIAL, INSTALLATION OF STORM DRAINAGE PIPE OR DRAINAGE STRUCTURES, CONCRETE CURB & GUTTER, PLACEMENT OF CRUSHED STONE OR ASPHALT. THE SUBGRADE SHALL BE APPROVED BY THE CONWAY STREET DEPARTMENT PRIOR TO PLACEMENT OF CURB AND GUTTER OR CRUSHED STONE.
- EARTHWORK EQUIPMENT SHALL INCLUDE AN APPROPRIATE SIZE VIBRATORY SHEEP'S FOOT COMPACTOR, WATER TRUCK AND MOTOR PATROL.
- ALL FILL MATERIAL PLACED WITHIN THE LIMITS OF THE STREET (BACK OF CURB TO BACK OF CURB) SHALL BE PLACED IN LIFTS NOT EXCEEDING 8" AND EACH LIFT COMPACTED WITH A SHEEP'S FOOT ROLLER (COMPACTION WITH TRACK EQUIPMENT OR OTHER EQUIPMENT NOT SPECIFICALLY DESIGNED FOR EARTHWORK COMPACTION IS NOT SUITABLE) TO 95% MODIFIED PROCTOR DENSITY. FILL MATERIAL SHALL BE APPROVED BY THE CONWAY STREET DEPARTMENT PRIOR TO USE IN STREET FILLS (NO TOP SOIL OR ORGANIC MATERIAL SHALL BE INCLUDED IN THE FILL MATERIAL). THE MOISTURE CONTENT OF THE FILL MATERIAL SHALL BE PLUS OR MINUS 3% OF OPTIMUM. ALL EARTHWORK SHALL CONFORM TO THE REQUIREMENTS OF SECTIONS 210 AND 212 OF ARKANSAS STATE HIGHWAY DEPARTMENT'S "STANDARD SPECIFICATIONS FOR HIGHWAY CONSTRUCTION".
- THE SUBGRADE (BACK OF CURB TO BACK OF CURB) SHALL BE PREPARED IN ACCORDANCE WITH SECTION 212 OF THE ARKANSAS STATE HIGHWAY DEPARTMENT'S "STANDARD SPECIFICATIONS FOR HIGHWAY CONSTRUCTION". PRIOR TO PLACEMENT OF THE CRUSHED STONE BASE COURSE THE SUBGRADE MUST BE VERIFIED TO CONFORM TO THE PROPER SHAPE AND GRADE AND MUST FIELD DEMONSTRATE THAT IT IS FIRM AND UNYIELDING TO THE PASSAGE OF EQUIPMENT OVER THE SUBGRADE.
- ALL STORM DRAINAGE PIPE SHALL BE RCP CLASS III UNLESS SPECIFICALLY APPROVED OTHERWISE.
- CRUSHED STONE BASE COURSE SHALL CONFORM TO THE REQUIREMENT FOR CLASS 7 AGGREGATE BASE COURSE AS DESCRIBED IN SECTION 303-AGGREGATE BASE COURSE OF THE ARKANSAS HIGHWAY DEPARTMENT'S "STANDARD SPECIFICATIONS FOR HIGHWAY CONSTRUCTION". THE CRUSHED STONE BASE COURSE GRADATION SHALL CONFORM TO THE ABOVE REFERENCED SPECIFICATION FOR THIS MATERIAL AFTER THE MATERIAL HAS BEEN PLACED AND COMPACTED. SAMPLES OF THE IN-PLACE MATERIAL MAY BE OBTAINED AND TESTED BY THE OWNER TO ASSURE CONFORMANCE TO THE SPECIFICATION. MATERIAL NOT CONFORMING TO THE SPECIFICATIONS SHALL BE REMOVED AND REPLACED. IN ADDITION, THE CRUSHED STONE BASE COURSE MATERIAL SHALL HAVE A MINIMUM CBR (CALIFORNIA BEARING RATIO) OF 75 AS DESCRIBED IN THE PROJECT SPECIFICATIONS.
- ALL MUD, SOIL AND LOOSE GRAVEL SHALL BE REMOVED FROM THE CRUSHED STONE BASE AND CONCRETE CURB AND GUTTER PRIOR TO PLACEMENT OF ASPHALT.
- STORM DRAINAGE PIPES, DITCHES AND DRAINAGE STRUCTURES MUST BE FREE OF SEDIMENTS, TRASH, DEBRIS AND PONDING WATER PRIOR TO FINAL APPROVAL OF THE STREETS.
- PRIOR TO THE PLACEMENT OF CONCRETE FOR CURB INLETS, BOX CULVERTS OR OTHER CONCRETE STRUCTURES, THE CONTRACTOR SHALL PROVIDE 24 HOUR NOTICE OF THE INTENT TO PLACE CONCRETE AND REQUEST THAT THE CITY INSPECT THE REINFORCING STEEL AND FORMING TO VERIFY CONFORMANCE WITH THE PLANS. CONCRETE PLACED WITHOUT CITY INSPECTION TO VERIFY REINFORCING STEEL PLACEMENT AND CONCRETE THICKNESS WILL NOT BE ACCEPTED AND SHALL BE TORN OUT AND RECONSTRUCTED WITH APPROPRIATE CITY APPROVAL.
- CONSTRUCTION SHALL NOT COMMENCE ON THIS PROJECT UNTIL A STORM WATER POLLUTION PREVENTION PLAN HAS BEEN PROPERLY IMPLEMENTED.
- THE CONTRACTOR SHALL PROVIDE APPROPRIATE ADVANCED WARNING DEVICES, BARRICADES, BARRELS AND OTHER MEASURES AS NEEDED TO PROPERLY CONTROL AND ADVISE TRAFFIC.
- ALL WHEEL CHAIR RAMPS TO BE TYPE 3 UNLESS OTHERWISE NOTED
- ALL WORK SHALL CONFORM TO THE CITY OF CONWAY STANDARD DETAILS

QUALITY CONTROL REQUIREMENTS:

THE CITY WILL SECURE THE SERVICES OF AN INDEPENDENT TESTING CONSULTANT AND PROVIDE TEST AND CERTIFICATIONS IN ACCORDANCE WITH THE FOLLOWING:

- STREET SUBGRADE:
- REQUIRED MINIMUM DENSITY 95% MODIFIED PROCTOR DENSITY. FIELD DENSITY TEST SHALL BE PERFORMED ON EACH LIFT OF FILL PLACED IN THE STREET SUBGRADE AND ON UTILITY AND STORM DRAINAGE PIPE TRENCHES.
 - STREET SUBGRADE DENSITY TESTS ARE REQUIRED FOR EVERY 800 FEET OF STREET SUBGRADE FOR EACH LIFT (8" MAXIMUM) OF EMBANKMENT OR FILL MATERIAL PLACED.
 - THE LOCATION OF THE TESTING WILL BE RANDOMLY IDENTIFIED IN THE FIELD BY THE CITY ENGINEER OR HIS DESIGNATED REPRESENTATIVE. THE FIELD DENSITY TEST SHALL BE PERFORMED IN THE PRESENCE OF THE CITY'S DESIGNATED REPRESENTATIVE.
 - IF A SUBGRADE DENSITY TEST IS LESS THAN THE MINIMUM REQUIRED A TEST IS REQUIRED ON THE RECOMPACTED AREA AS WELL AS AN ADDITIONAL TEST AT A LOCATION DESIGNATED BY THE CITY ENGINEER WITHIN 300 FEET OF THE SUBSTANDARD AREA.
 - THE CONTRACTOR SHALL PAY FOR THE RETESTING ALONG WITH ADDITIONAL TEST REQUIRED DUE TO THE FAILURE.
- CRUSHED STONE BASE COURSE
- FIELD DENSITY TEST (95% MINIMUM) ARE REQUIRED ON THE COMPACTED CRUSHED STONE BASE COURSE FOR EVERY 1,500 FEET OF BASE COURSE (TEST LOCATION DETERMINED BY CITY).
 - PLANT CERTIFICATION AND TEST RESULTS SHALL BE SUBMITTED VERIFYING THE MATERIAL CONFORMS TO THE GRADATION AND AHTD SPECIFICATION FOR THE MATERIAL SPECIFIED. IN ADDITION, THE SUPPLIER OF CRUSHED STONE BASE COURSE SHALL PROVIDE A CURRENT CBR TEST CONFIRMING A MINIMUM CBR OF 75. THE CITY MAY ELECT TO OBTAIN FIELD SAMPLES TO VERIFY THE CBR AND GRADATION TEST.
 - MATERIAL NOT MEETING THE SPECIFICATION SHALL BE REMOVED AND REPLACED WITH SUITABLE MATERIAL.
 - THE THICKNESS OF THE MATERIAL SHALL BE FIELD VERIFIED FOR EVERY 1,500 FEET OF STREET CONSTRUCTED.
 - THE COMPACTED INPLACE GRADATION OF THE MATERIAL SHALL CONFORM TO THE GRADATION AS SPECIFIED FOR CLASS 7 AGGREGATE BASE COURSE IN THE AHTD STANDARD SPECIFICATION FOR HIGHWAY CONSTRUCTIONS.

FOR NOTIFICATION OF NEEDED INSPECTION CONTACT:
CITY OF CONWAY
STREET AND ENGINEERING DEPARTMENT
100 EAST ROBINS
CONWAY, ARKANSAS 72032
PHONE 501-450-6165 FAX 501-513-3566

COORDINATION OF THE WORK

THE CONTRACTOR SHALL PROVIDE COMPETENT AND EXPERIENCED FIELD PERSONNEL TO COORDINATE THE WORK AND VERIFY THAT THE CONTRACTOR IS CONFORMING TO THE PLANS AND SPECIFICATIONS.
THE CITY IS NOT RESPONSIBLE FOR COORDINATION OF THE PROJECT WORK.

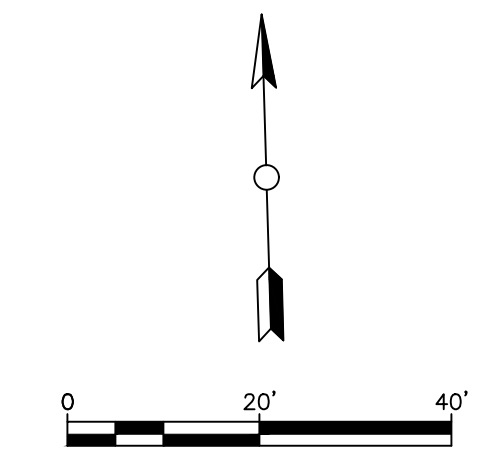
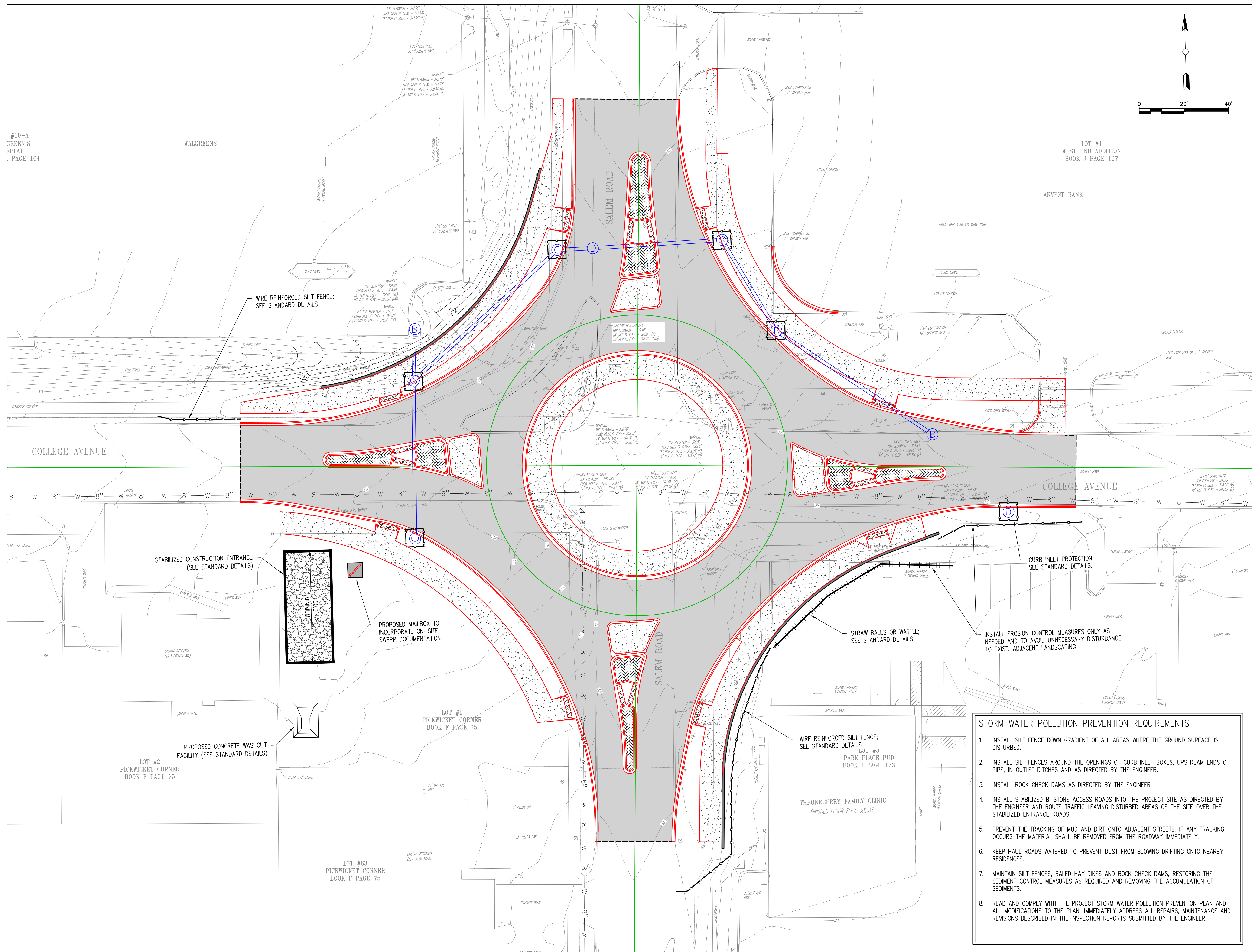
No.	Revision/Issue	Date

TYPICAL SECTIONS & GENERAL NOTES

JOB NUMBER: 16-107

DRAWN BY: NTR	SHEET #:
CHECKED BY: BFV	C2
DATE: 06/14/17	
SCALE: N.T.S.	

COLLEGE & SALEM ROUNDABOUT CONSTRUCTION CONWAY, ARKANSAS



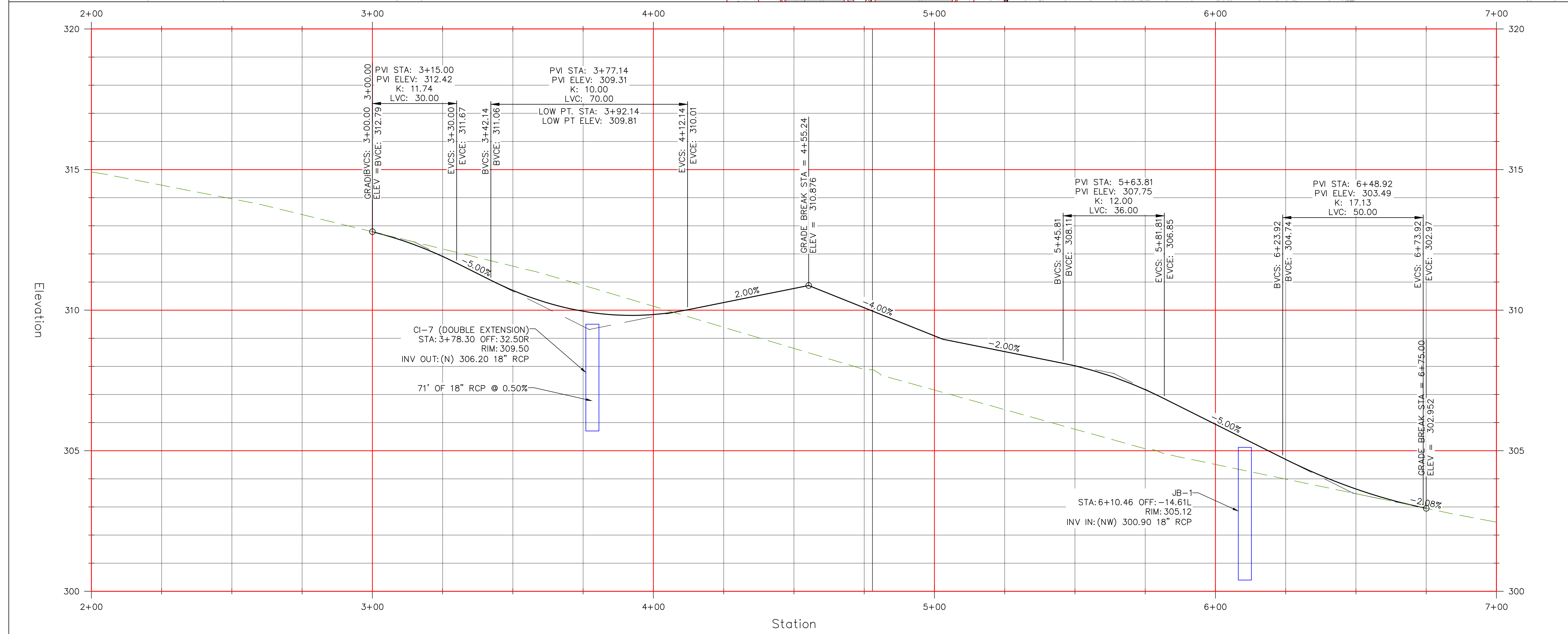
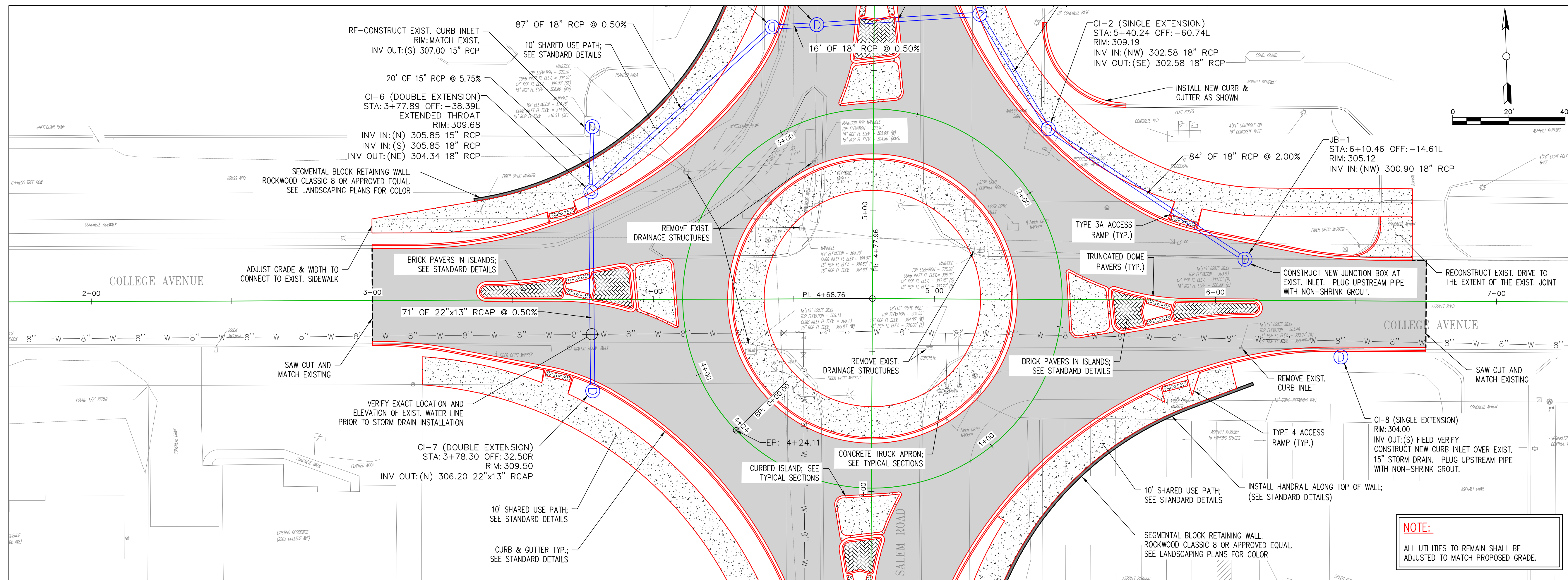
- STORM WATER POLLUTION PREVENTION REQUIREMENTS**
1. INSTALL SILT FENCE DOWN GRADIENT OF ALL AREAS WHERE THE GROUND SURFACE IS DISTURBED.
 2. INSTALL SILT FENCES AROUND THE OPENINGS OF CURB INLET BOXES, UPSTREAM ENDS OF PIPE, IN OUTLET DITCHES AND AS DIRECTED BY THE ENGINEER.
 3. INSTALL ROCK CHECK DAMS AS DIRECTED BY THE ENGINEER.
 4. INSTALL STABILIZED B-STONE ACCESS ROADS INTO THE PROJECT SITE AS DIRECTED BY THE ENGINEER AND ROUTE TRAFFIC LEAVING DISTURBED AREAS OF THE SITE OVER THE STABILIZED ENTRANCE ROADS.
 5. PREVENT THE TRACKING OF MUD AND DIRT ONTO ADJACENT STREETS. IF ANY TRACKING OCCURS THE MATERIAL SHALL BE REMOVED FROM THE ROADWAY IMMEDIATELY.
 6. KEEP HAUL ROADS WATERED TO PREVENT DUST FROM BLOWING DRIFTING ONTO NEARBY RESIDENCES.
 7. MAINTAIN SILT FENCES, BALED HAY DIKES AND ROCK CHECK DAMS, RESTORING THE SEDIMENT CONTROL MEASURES AS REQUIRED AND REMOVING THE ACCUMULATION OF SEDIMENTS.
 8. READ AND COMPLY WITH THE PROJECT STORM WATER POLLUTION PREVENTION PLAN AND ALL MODIFICATIONS TO THE PLAN. IMMEDIATELY ADDRESS ALL REPAIRS, MAINTENANCE AND REVISIONS DESCRIBED IN THE INSPECTION REPORTS SUBMITTED BY THE ENGINEER.

No.	Revision/Issue	Date

EROSION CONTROL PLAN
JOB NUMBER: 16-107

DRAWN BY: NTR	SHEET #: C3
CHECKED BY: BFV	
DATE: 06/14/17	
SCALE: 1"=20'	

COLLEGE & SALEM ROUNDABOUT CONSTRUCTION CONWAY, ARKANSAS

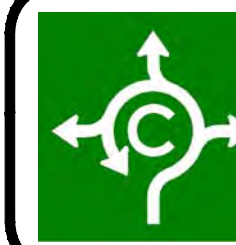


No.	Revision/Issue	Date

PLAN & PROFILE
COLLEGE AVENUE
STA. 2+00 TO STA. 7+00
JOB NUMBER: 16-107

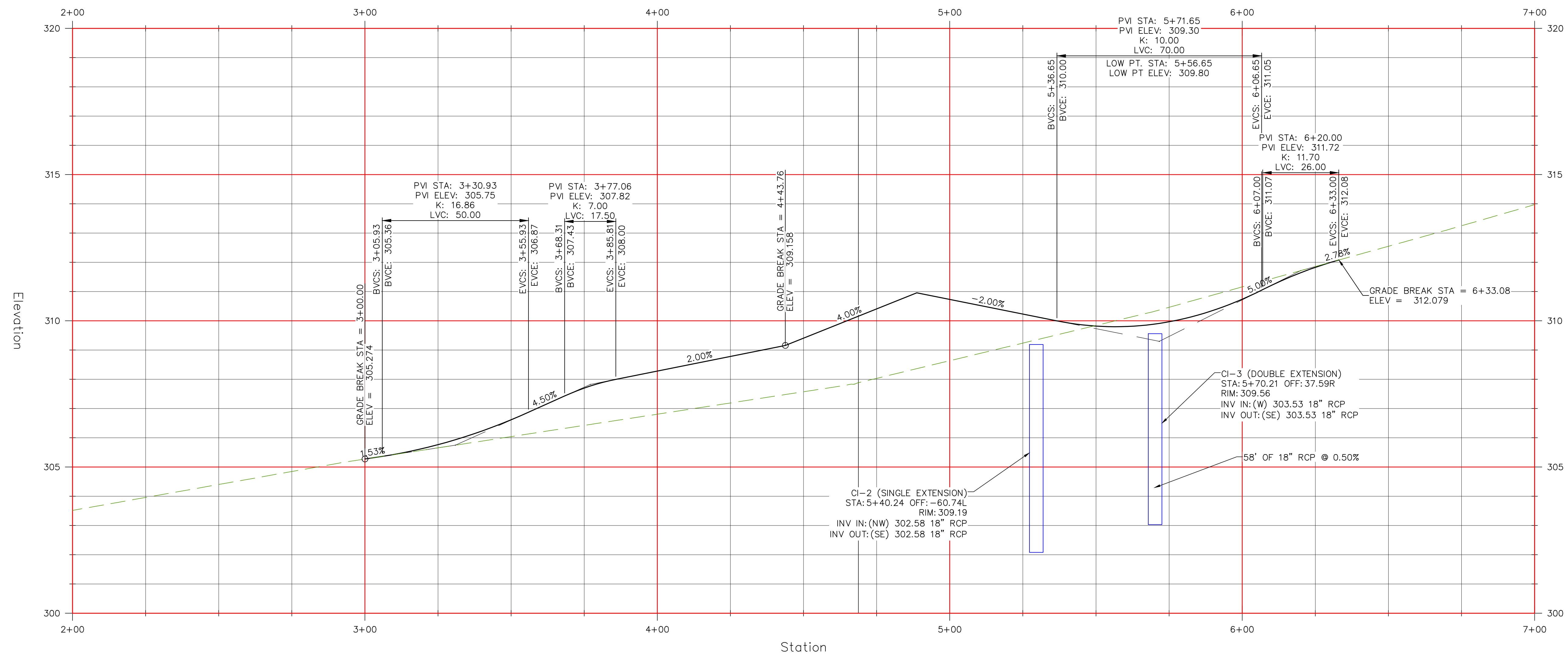
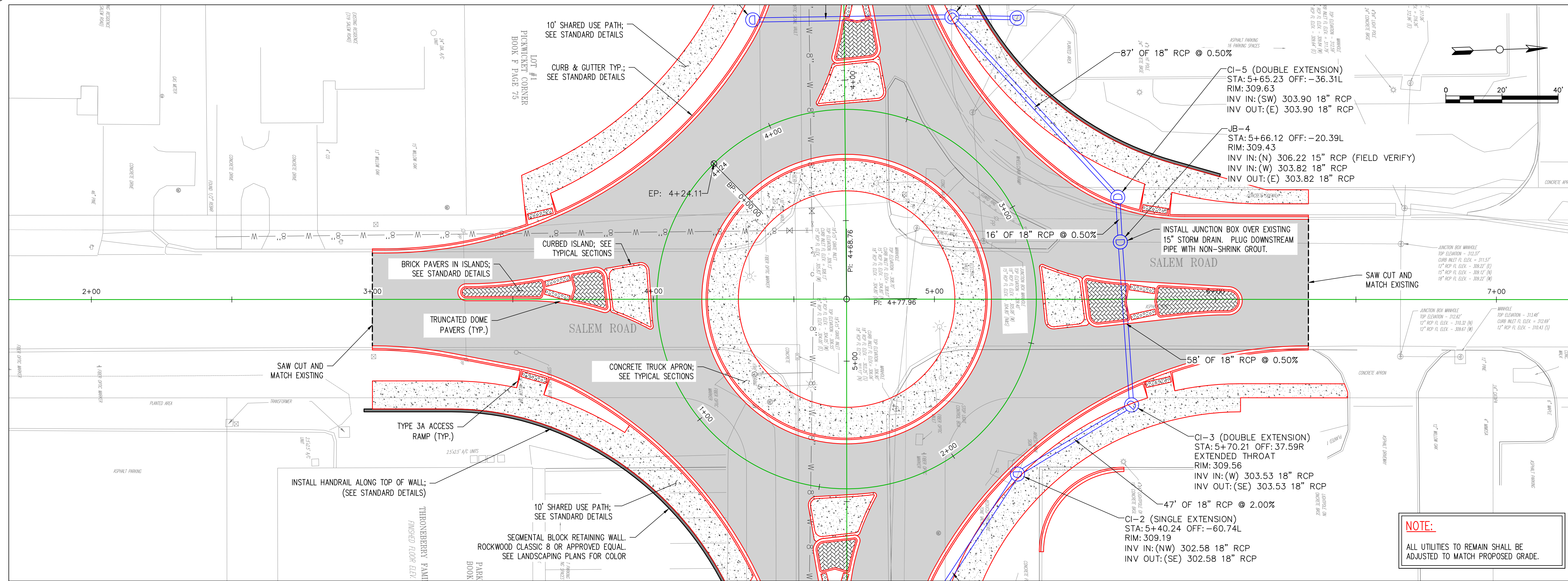
DRAWN BY: NTR
CHECKED BY: BFV
DATE: 06/14/17
SCALE: 1"=20'

SHEET #:
C4



CITY OF CONWAY
STREET & ENGINEERING
DEPARTMENT
100 EAST ROBINS
CONWAY, AR 72032
501-450-6165

COLLEGE & SALEM ROUNDABOUT CONSTRUCTION CONWAY, ARKANSAS



No.	Revision/Issue	Date

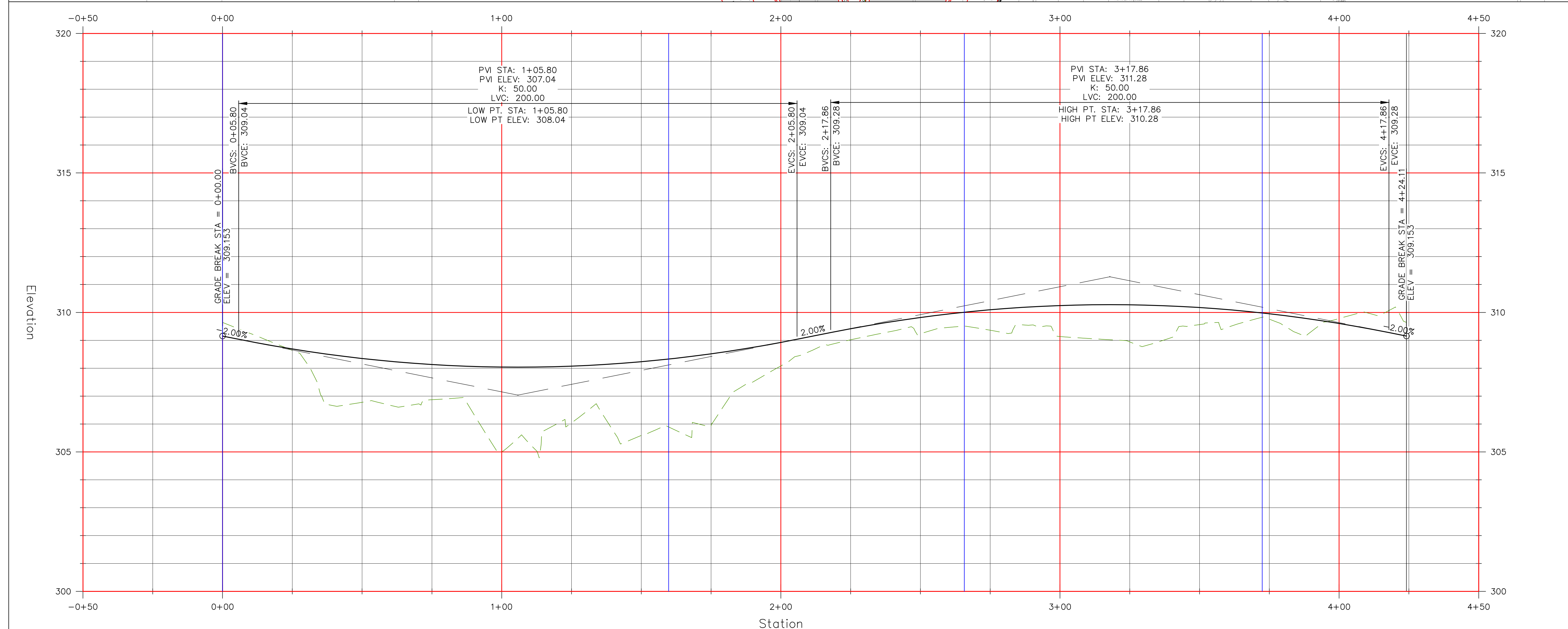
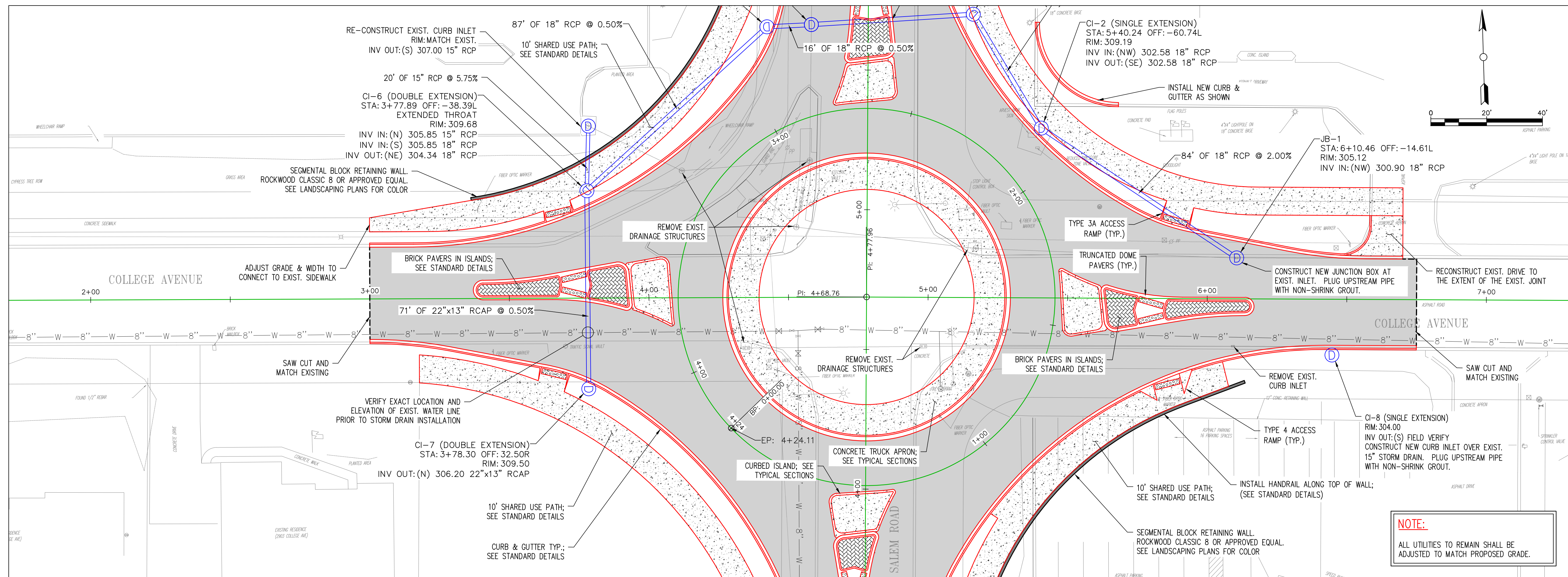
PLAN & PROFILE
SALEM ROAD
STA. 2+00 TO STA. 7+00
JOB NUMBER: 16-107

DRAWN BY: NTR
CHECKED BY: BFV
DATE: 06/14/17
SCALE: 1"=20'

SHEET #:
C5



COLLEGE & SALEM ROUNDABOUT CONSTRUCTION CONWAY, ARKANSAS



No.	Revision/Issue	Date

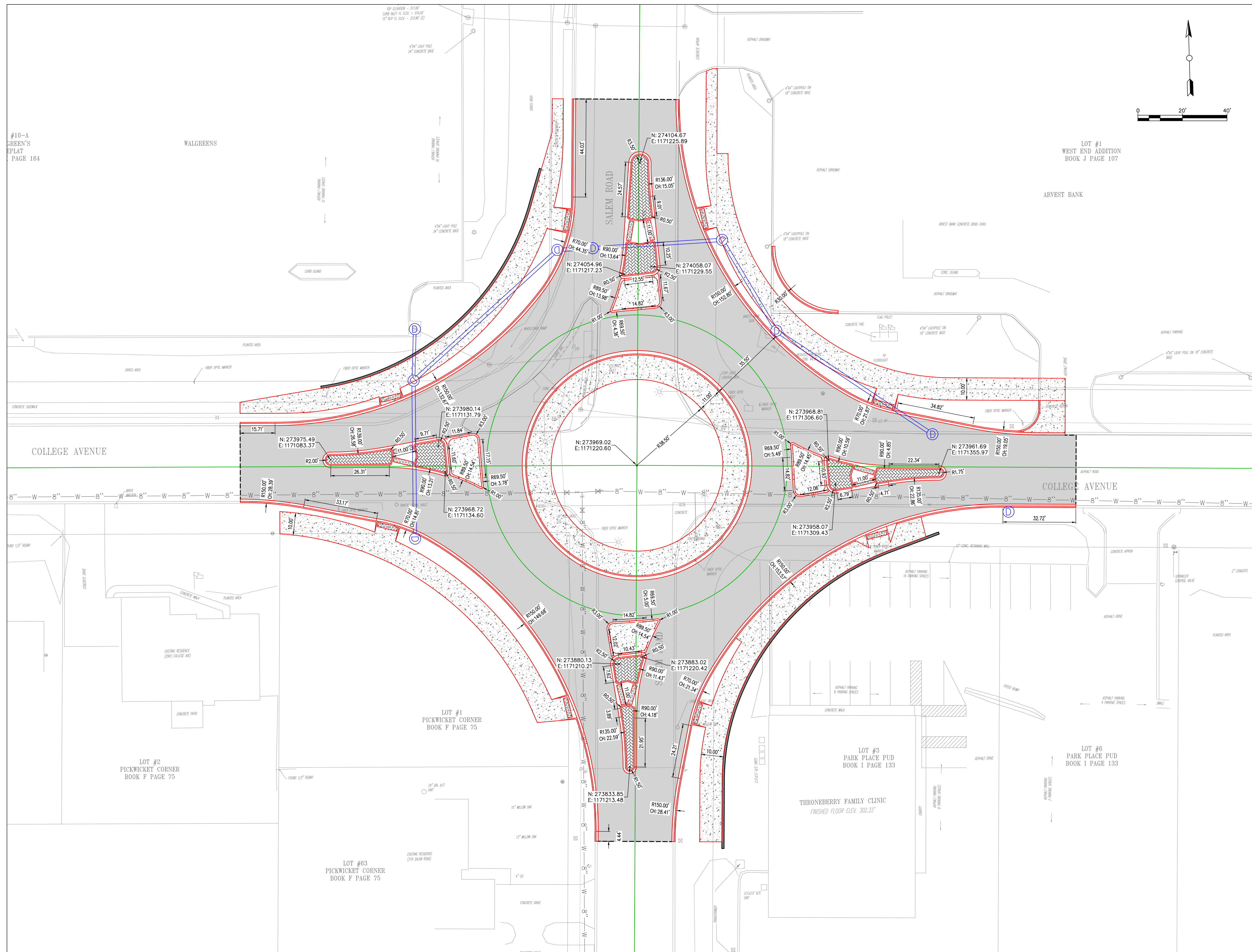
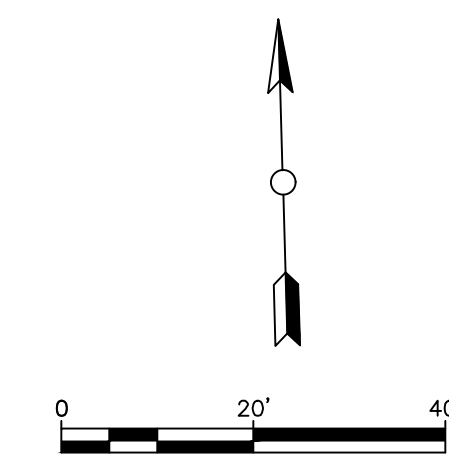
PLAN & PROFILE
ROUNDABOUT
STA. -0+50 TO STA. 4+50
JOB NUMBER: 16-107

DRAWN BY: NTR
CHECKED BY: BFV
DATE: 06/14/17
SCALE: 1"=20'

SHEET #:
C6



CITY OF CONWAY
STREET & ENGINEERING
DEPARTMENT
100 EAST ROBINS
CONWAY, AR 72032
501-450-6165



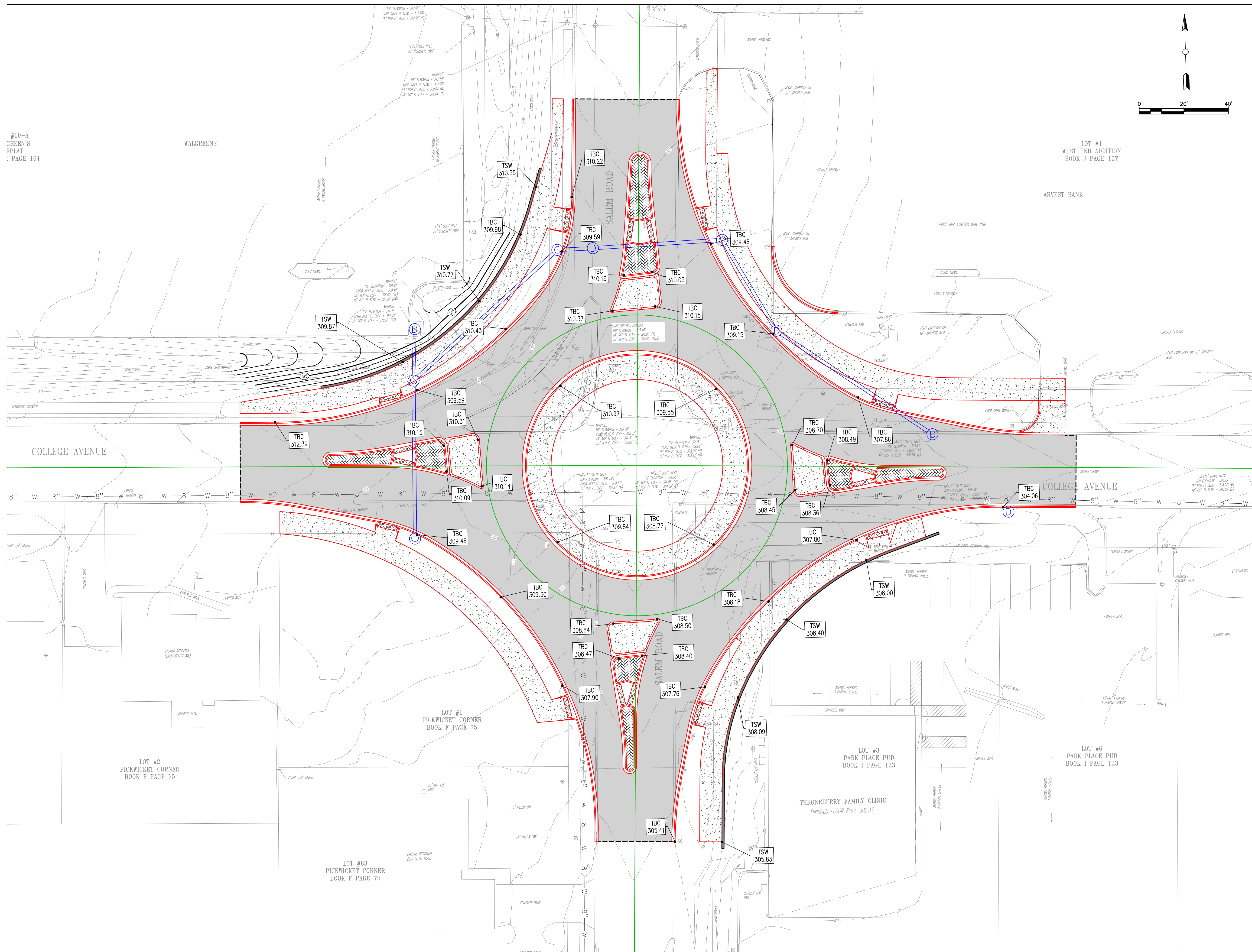
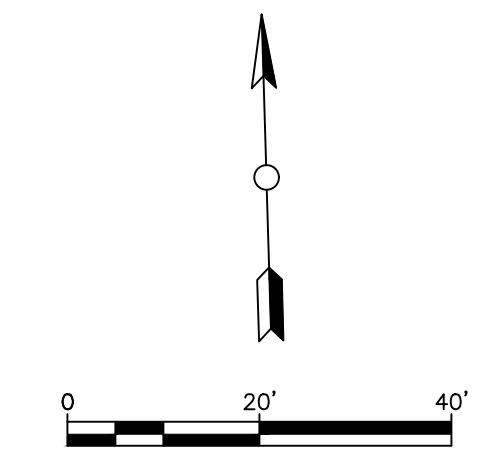
COLLEGE & SALEM ROUNDABOUT CONSTRUCTION CONWAY, ARKANSAS

No.	Revision/Issue	Date

DIMENSIONING PLAN

JOB NUMBER: 16-107

DRAWN BY: NTR	SHEET #:
CHECKED BY: Bfv	C7
DATE: 06/14/17	
SCALE: 1"=20'	



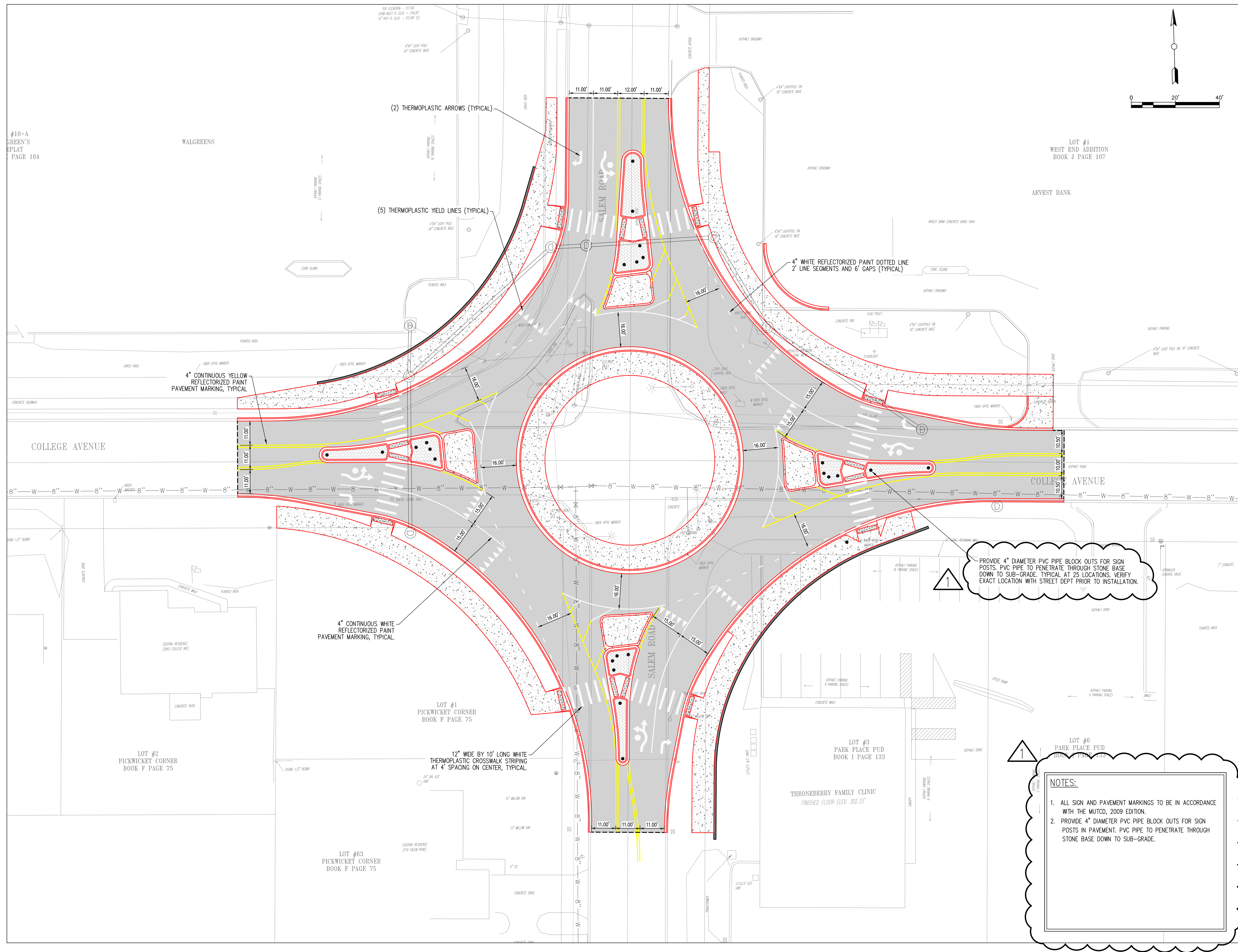
COLLEGE & SALEM ROUNDABOUT CONSTRUCTION CONWAY, ARKANSAS

No.	Revision/Issue	Date

GRADING PLAN
 JOB NUMBER: 16-107

DRAWN BY: NTR	SHEET #:
CHECKED BY: BFV	C8
DATE: 06/14/17	
SCALE: 1"=20'	

COLLEGE & SALEM ROUNDABOUT CONSTRUCTION CONWAY, ARKANSAS



1 PROVIDE 4" DIAMETER PVC PIPE BLOCK OUTS FOR SIGN POSTS. PVC PIPE TO PENETRATE THROUGH STONE BASE DOWN TO SUB-GRADE. TYPICAL AT 29 LOCATIONS. VERIFY EXACT LOCATION WITH STREET DEPT PRIOR TO INSTALLATION.

1
NOTES:
 1. ALL SIGN AND PAVEMENT MARKINGS TO BE IN ACCORDANCE WITH THE MUTCD, 2009 EDITION.
 2. PROVIDE 4" DIAMETER PVC PIPE BLOCK OUTS FOR SIGN POSTS IN PAVEMENT. PVC PIPE TO PENETRATE THROUGH STONE BASE DOWN TO SUB-GRADE.

No.	Revision/Issue	Date
1	REMOVING BEACONS & SIGNS	06/14/17

STRIPING & SIGNAGE PLAN
 JOB NUMBER: 16-107

DRAWN BY: NTR	SHEET #:
CHECKED BY: Bfv	C9
DATE: 06/14/17	
SCALE: 1"=20'	

#10-A
 GREEN'S
 REPLAT
 PAGE 164

WALGREENS

LOT #1
 WEST END ADDITION
 BOOK J PAGE 107

COLLEGE AVENUE

COLLEGE AVENUE

LOT #1
 PICKWICK CORNER
 BOOK F PAGE 75

LOT #2
 PICKWICK CORNER
 BOOK F PAGE 75

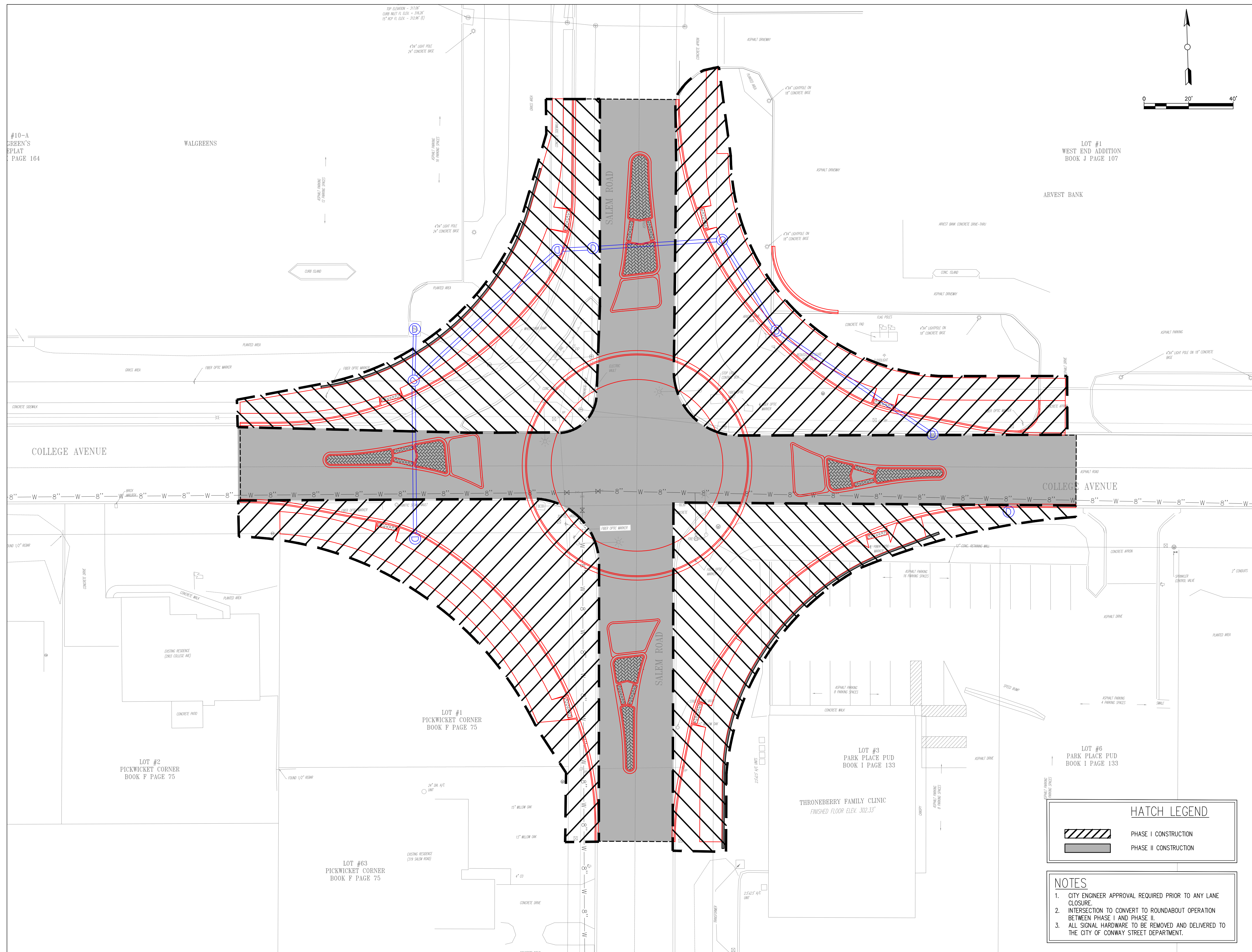
LOT #63
 PICKWICK CORNER
 BOOK F PAGE 75

LOT #3
 PARK PLACE PUD
 BOOK I PAGE 133

THRONEBERRY FAMILY CLINIC
 FINISHED FLOOR ELEV. 302.33'

LOT #6
 PARK PLACE PUD
 BOOK I PAGE 133

**COLLEGE & SALEM
 ROUNDABOUT CONSTRUCTION
 CONWAY, ARKANSAS**



HATCH LEGEND

	PHASE I CONSTRUCTION
	PHASE II CONSTRUCTION

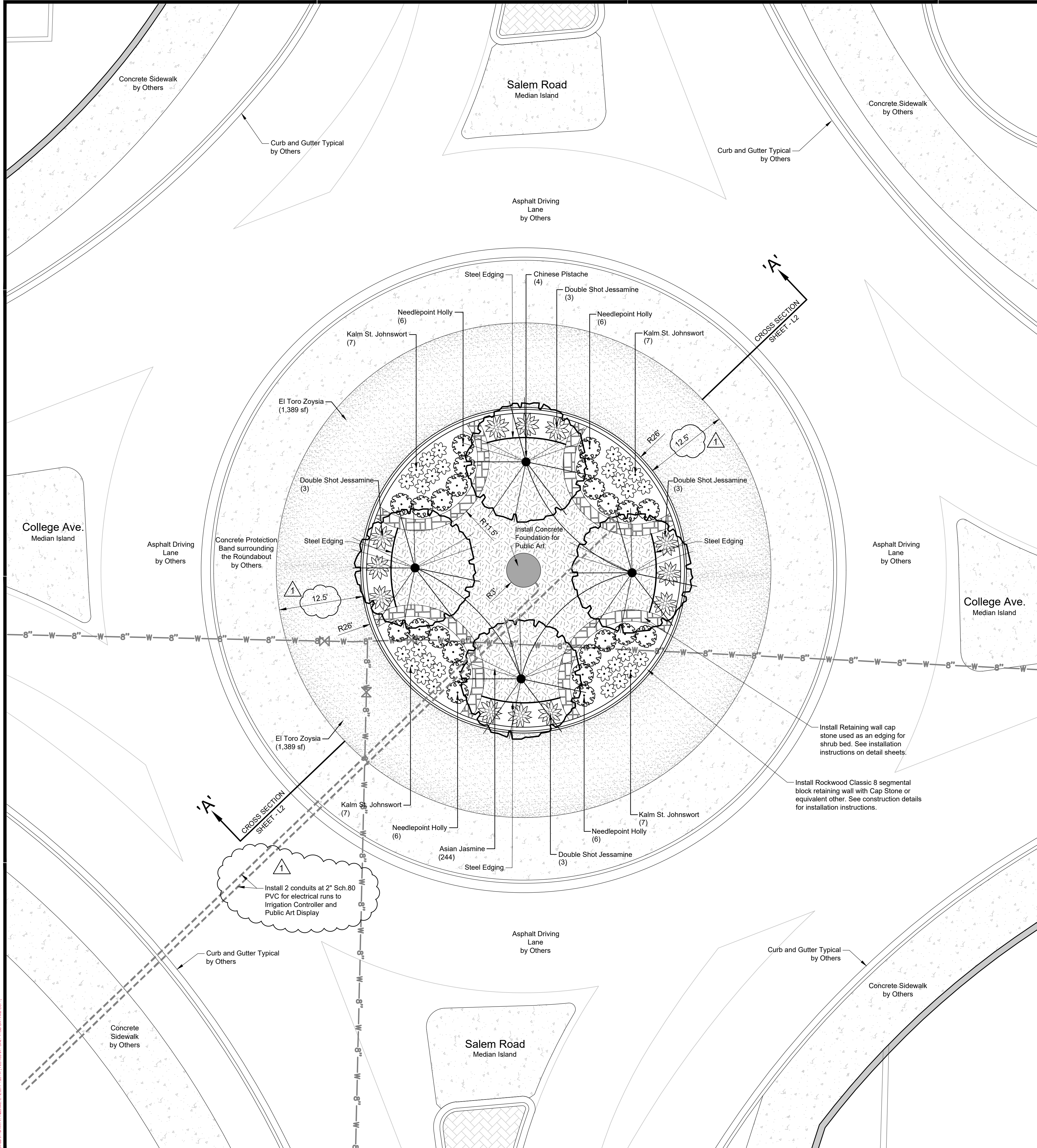
- NOTES**
1. CITY ENGINEER APPROVAL REQUIRED PRIOR TO ANY LANE CLOSURE.
 2. INTERSECTION TO CONVERT TO ROUNDABOUT OPERATION BETWEEN PHASE I AND PHASE II.
 3. ALL SIGNAL HARDWARE TO BE REMOVED AND DELIVERED TO THE CITY OF CONWAY STREET DEPARTMENT.

No.	Revision/Issue	Date

MAINTENANCE OF TRAFFIC PLAN

JOB NUMBER: 16-107

DRAWN BY: NTR	SHEET #:
CHECKED BY: BFV	C10
DATE: 06/14/17	
SCALE: 1"=20'	



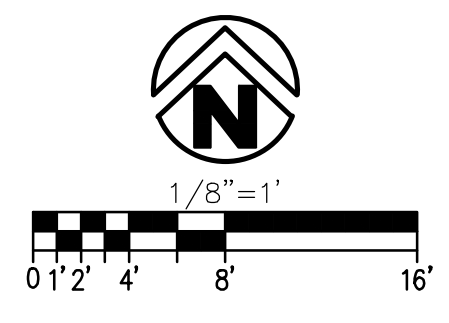
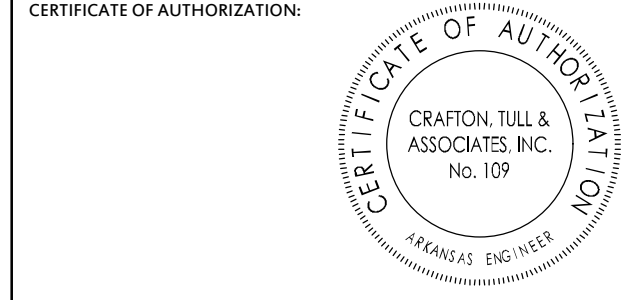
LANDSCAPE NOTES

- CONTRACTOR SHALL CONFIRM THE LOCATION OF ALL UTILITIES PRIOR TO STARTING ANY WORK. THE CONTRACTOR IS RESPONSIBLE FOR CONTACTING THE ONE-CALL SYSTEM. ALL UTILITY LOCATIONS SHOWN ON THIS PLAN ARE APPROXIMATE AND ARE BASED ON SURVEY INFORMATION, SITE DEVELOPMENT PLANS, UTILITY RECORDS, ETC.
- ALL PLANT MATERIAL SHALL BE NURSERY GROWN. THE SIZE AND GRADING SHALL MEET OR EXCEED THE LATEST EDITION OF AMERICAN STANDARDS FOR NURSERY STOCK PUBLISHED BY THE AMERICAN NURSERY AND LANDSCAPE ASSOCIATION.
- ALL ENTRANCE/EXIT PLANTINGS SHALL BE INSTALLED AND MAINTAINED TO PROVIDE CLEAR SIGHT DISTANCE FROM THE STREETS AND THE ENTRANCE/EXIT LOCATIONS.
- CONTRACTOR IS RESPONSIBLE FOR MAINTAINING REQUIRED SHRUBS AND TREES PER CITY LANDSCAPE ORDINANCE OR UNTIL PROJECT IS TURNED OVER AND ACCEPTED BY OWNER.
- NO CHANGES TO THE PLANT SCHEDULE ARE ALLOWED WITHOUT APPROVAL OF THE OWNER, LANDSCAPE ARCHITECT AND CITY. SUBSTITUTED PLANTS SHALL MEET THE SAME CRITERIA REGARDING TYPE, SIZE AND FUNCTION AS THOSE PLANTS SHOWN ON THE PLAN.
- ALL LAWN AREAS ARE TO RECEIVE 8" OF TOPSOIL TO FINAL GRADE. ALL SHRUB AREAS SHALL RECEIVE TOPSOIL PER CONSTRUCTION DETAIL SHEET L2. SOIL SHALL BE AMENDED TO ENHANCE FAVORABLE GROWING CONDITIONS. ALL EXISTING SOD/WEEDS SHALL BE REMOVED FROM PLANTING BED AREAS.
- ALL PLANT BEDS SHALL BE TREATED WITH A WEED BARRIER AND A MINIMUM OF 4" PINE STRAW MULCH. TREES NOT LOCATED IN PLANT BEDS SHALL RECEIVE A MULCH SAUCER PER DETAIL.
- ALL TREES AND SHRUBS SHALL BE INSTALLED IN ACCORDANCE WITH THE DETAILS PROVIDED.
- ALL SHRUBS AND TREES SHALL BE TREATED WITH 13-13-13 TIME RELEASE FERTILIZER UPON COMPLETION OF THEIR INSTALLATION.
- ALL DISTURBED AREAS NOT TO RECEIVE PLANTINGS SHALL BE SEEDED WITH 60% BERMUDA GRASS AND 40% ANNUAL RYEGRASS AT 5 LBS PER 1,000 SF DURING THE APPROPRIATE TIME OF YEAR FOR THE SEED TO GERMINATE. IF THIS CANNOT BE ACCOMPLISHED, THE CONTRACTOR SHALL CALL THE LANDSCAPE ARCHITECT FOR A GRASS SEED SUBSTITUTION.
- AT A MINIMUM, SOD SHALL BE INSTALLED ON 3:1 SLOPES AND GREATER AND AN EIGHTEEN (18") STRIP OF SOD SHALL BE INSTALLED BEHIND ALL CURBS AND ADJACENT TO ALL SIDEWALKS AND ENTRY WALKS.
- IF A LANDSCAPE IRRIGATION SYSTEM IS TO BE CONSTRUCTED, LANDSCAPE CONTRACTOR TO CONFIRM LOCATION OF PLANNED IRRIGATION LINES WITH THE IRRIGATION CONTRACTOR PRIOR TO PLANT BED AND PLANT INSTALLATION.

PLANT SCHEDULE

DECIDUOUS TREES	BOTANICAL NAME / COMMON NAME	CONT	CAL	SIZE	QTY	
	PISTACIA CHINENSIS / CHINESE PISTACHE	B & B	3" CAL	8'-10' HT.	4	
SHRUBS	BOTANICAL NAME / COMMON NAME	SIZE	FIELD2	FIELD3	QTY	
	HYPERICUM KALMIANUM 'BLUE VELVET' / KALM ST. JOHN SWORT	3 GAL	18" HT. MIN.	18" SPREAD MIN.	28	
	ILEX CORNUTA 'NEEDLEPOINT' / NEEDLEPOINT HOLLY	5 GAL	24" MIN. HT.	18" SPREAD MIN.	24	
VINE/SPALIER	BOTANICAL NAME / COMMON NAME	SIZE	FIELD2	FIELD3	QTY	
	GELSEMIUM SEMPERVIRENS & RANKINII DOUBLE SHOT / DOUBLE SHOT JESSAMINE	5 GAL			12	
GROUND COVERS	BOTANICAL NAME / COMMON NAME	CONT	FIELD2	FIELD3	SPACING	QTY
	TRACHELOSPERMUM ASIATICUM / ASIAN JASMINE	1 GAL			24" o.c.	938 SF
SOD/SEED	BOTANICAL NAME / COMMON NAME	CONT	FIELD2	FIELD3	SPACING	QTY
	ZOYSIA JAPONICA 'EL TORO' / EL TORO ZOYSIA	SOLID SOD				2,778 SF

NOTE: SEE SHEETS L2, L3, AND L4 FOR CONSTRUCTION DETAILS



**ROUNDBOUT
LANDSCAPE DESIGN**
COLLEGE AVE. AND SALEM RD.
CONWAY, ARKANSAS

Key Plan

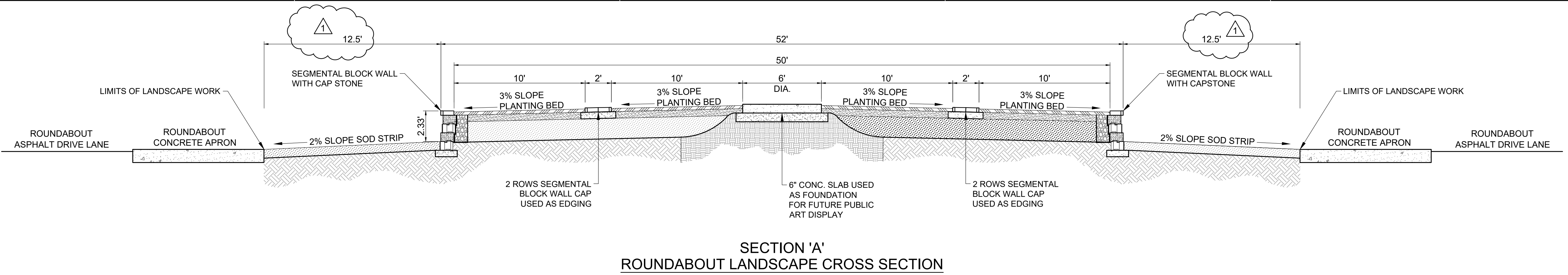
No.	Description	Date
1	ADDED ELECTRICAL CONDUIT RUNS FOR IRRIG. CONTROLS AND ART DISPLAY LIGHTING	06/12/2017
	ADJUSTED DIMENSIONS TO MATCH CIVIL PLANS	

This document, and the ideas and designs incorporated herein, as an instrument of professional service, is the property of Crafton, Tull & Associates, Inc. and is not to be used, in whole or in part, for any other project, without the written authorization of Crafton, Tull & Associates, Inc.

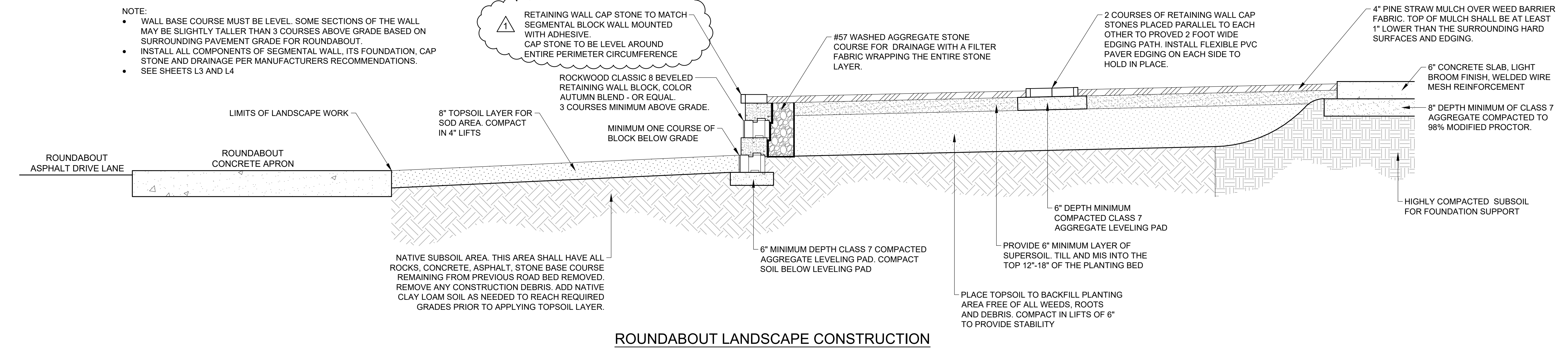
PROJECT NO: 167069_02
ISSUE DATE: 05/11/2017
CONTACT: B. Williams
CHECKED BY: **RICHMOND WILLIAMS**
ISSUED FOR CONSTRUCTION
No. 5026
STATE OF ARKANSAS

Arkansas One Call
811
Know what's below.
Call before you dig.

DRAWING CALDWELL, COOPER AND ASSOCIATES ARCHITECTS AND LANDSCAPE ARCHITECTS INC. 2017. ALL RIGHTS RESERVED. CRAFTON TULL & ASSOCIATES, INC. 2017. ALL RIGHTS RESERVED.



SECTION 'A'
ROUNDABOUT LANDSCAPE CROSS SECTION



ROUNDABOUT LANDSCAPE CONSTRUCTION

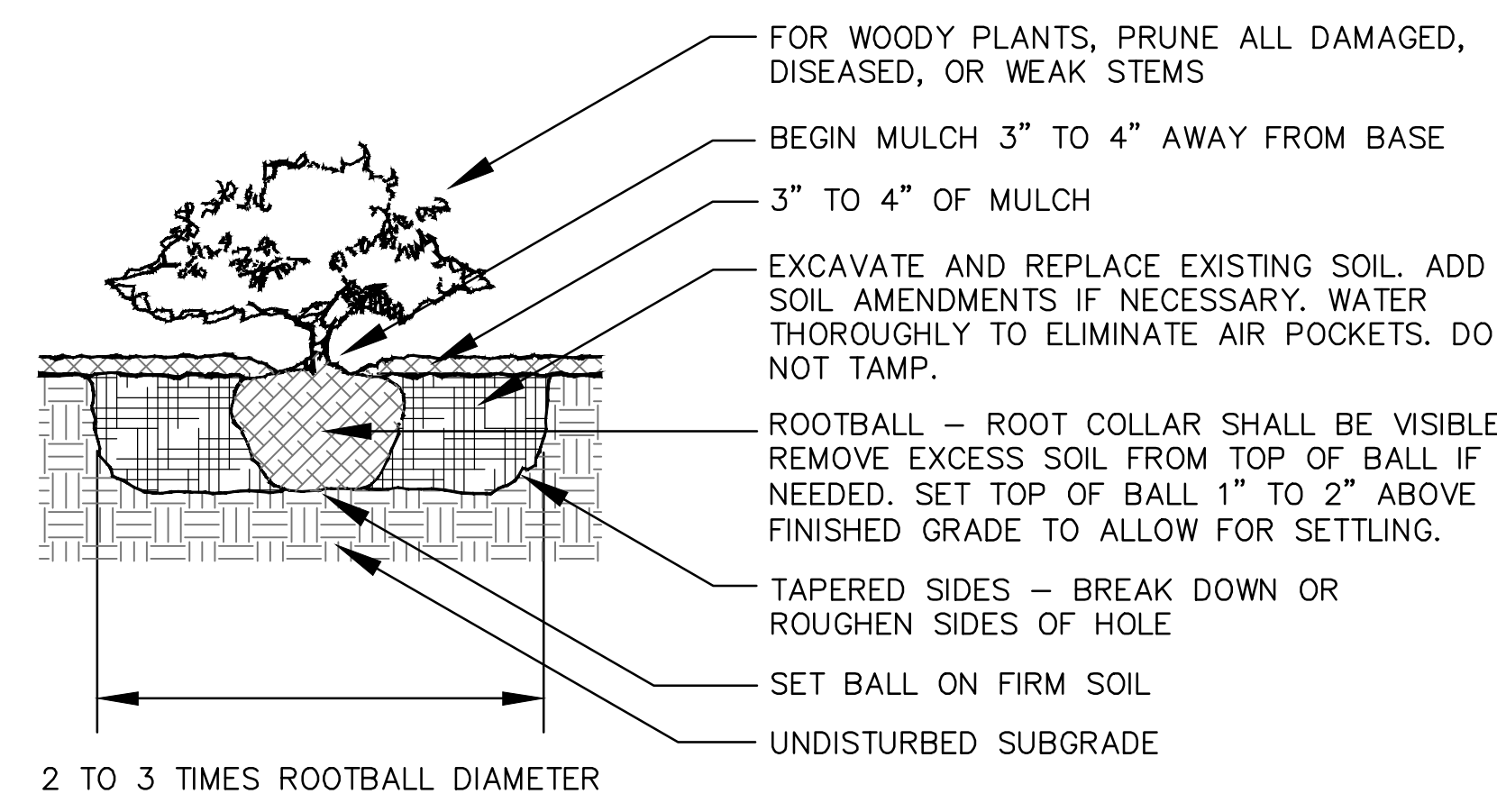
- NOTE:
- WALL BASE COURSE MUST BE LEVEL. SOME SECTIONS OF THE WALL MAY BE SLIGHTLY TALLER THAN 3 COURSES ABOVE GRADE BASED ON SURROUNDING PAVEMENT GRADE FOR ROUNDABOUT.
 - INSTALL ALL COMPONENTS OF SEGMENTAL WALL, ITS FOUNDATION, CAP STONE AND DRAINAGE PER MANUFACTURERS RECOMMENDATIONS.
 - SEE SHEETS L3 AND L4

- NOTES:
- TREES SHALL BE 3" CALIPER MINIMUM.
 - THE HOLE FOR THE TREE SHALL BE EXCAVATED 2-3 TIMES THE SIZE OF THE ROOT BALL.
 - STAKE ONLY IF NECESSARY AND AS DIRECTED BY THE PROJECT MANAGER.
 - REMOVE ANY TWINE, ROPE, FLAGGING, WRAPPING, OR GUARDS FROM TREE.
 - PRUNE ONLY DEAD OR BROKEN BRANCHES OR DOUBLE LEADERS AT TIME OF PLANTING.
 - ROOTBALL - ROOT COLLAR SHALL BE VISIBLE. REMOVE EXCESS SOIL FROM TOP OF BALL IF NEEDED. SET TOP OF BALL 1" TO 2" ABOVE FINISHED GRADE TO ALLOW FOR SETTLING. AFTER SETTLING, BALL IN PLANTING HOLE, CUT AWAY OR REMOVE THE ENTIRE WIRE BASKET. CUT AWAY OR REMOVE ALL ROPES OR TWINE FROM BALL. CUT AWAY OR REMOVE BURLAP. IF ROOTBALL BEGINS FALLING APART DURING INSTALLATION OR WHILE REMOVING THE WIRE BASKET, CUT AWAY ONLY HALF OF THE BURLAP.

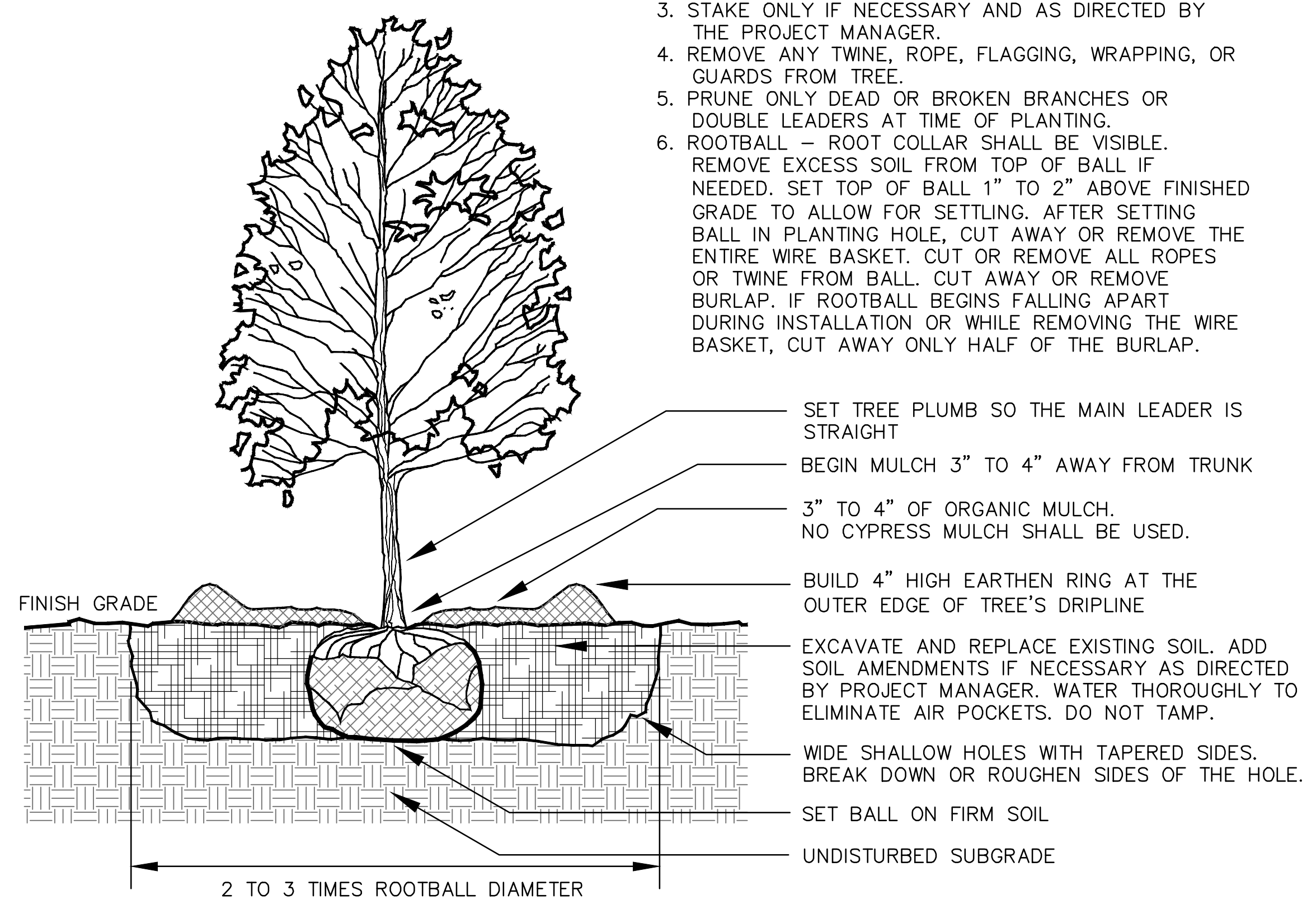
Arkansas One Call



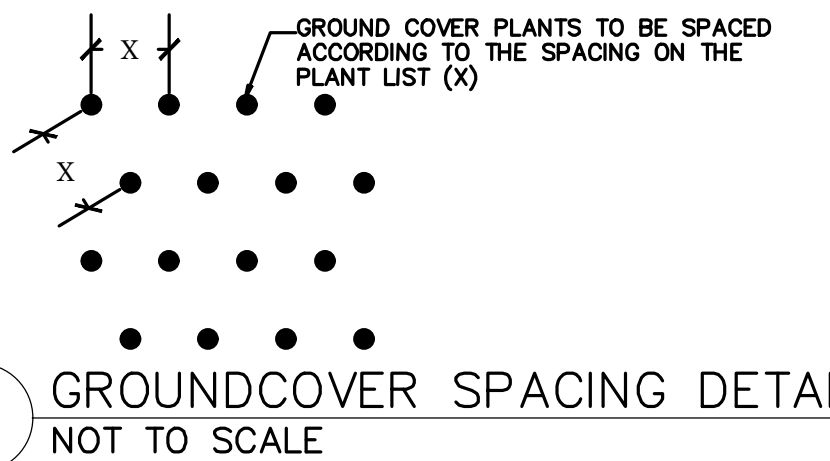
Know what's below.
Call before you dig.



SHRUB PLANTING DETAIL
NOT TO SCALE



TREE PLANTING DETAIL
NOT TO SCALE



GROUND COVER SPACING DETAIL
NOT TO SCALE

ROUNDABOUT
LANDSCAPE DESIGN
COLLEGE AVE. AND SALEM RD.
CONWAY, ARKANSAS

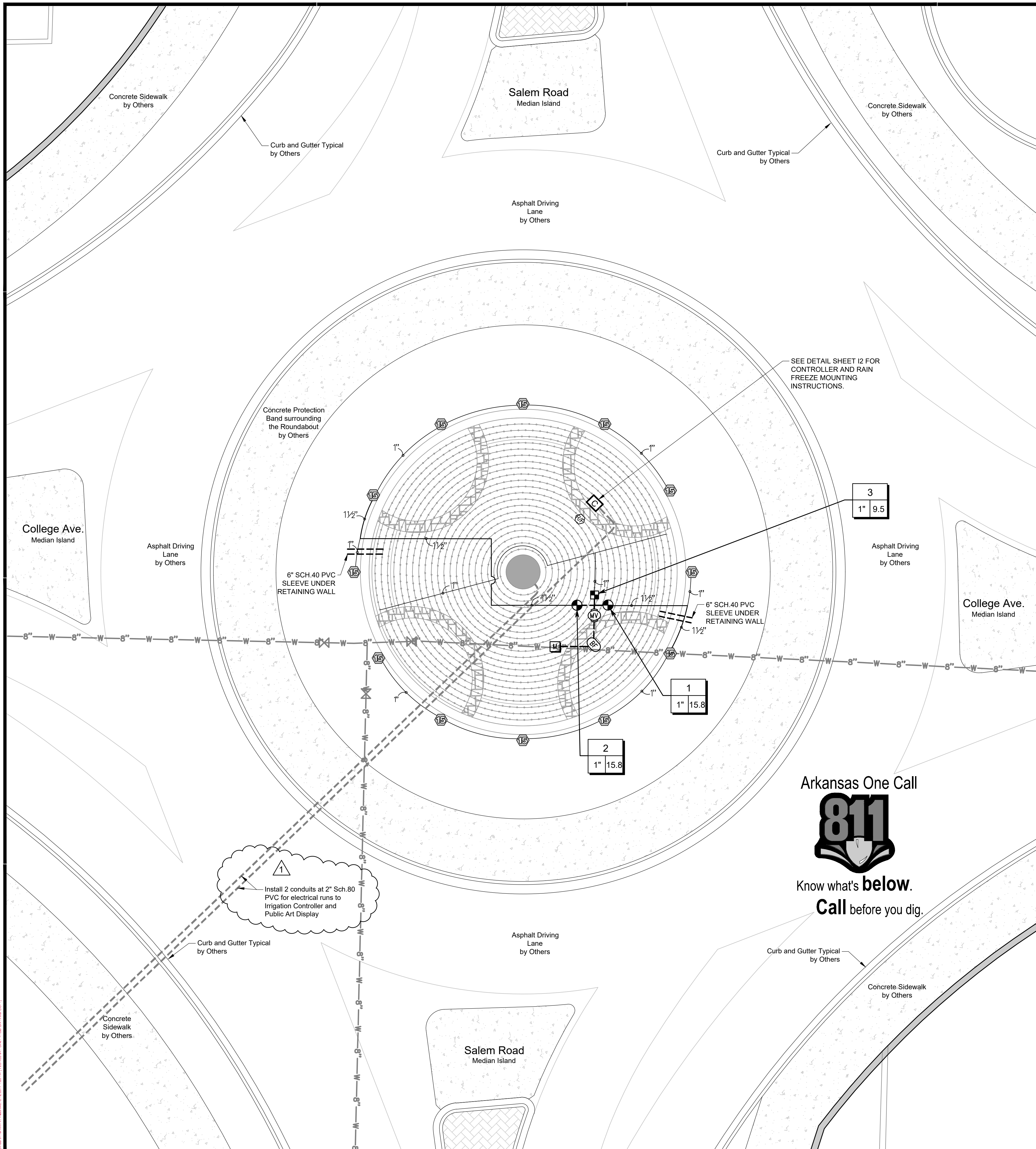
No.	Description	Date
1	ADJUSTED DIMENSIONS TO MATCH CIVIL PLANS	06/12/2017
	ADDITIONAL NOTE FOR CAP STONE	

This document, and the ideas and designs incorporated herein, as an instrument of professional service, is the property of Crafton, Tull & Associates, Inc. and is not to be used, in whole or in part, for any other project, without the written authorization of Crafton, Tull & Associates, Inc.

PROJECT NO: 167069_02
ISSUE DATE: 05/11/2017
CONTACT: B. Williams
ISSUED FOR CONSTRUCTION

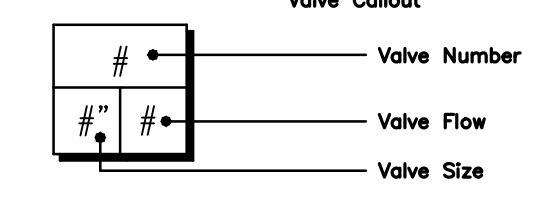
RICHMOND WILLIAMS
No. 5026

PLANTING & CONSTRUCTION DETAILS



IRRIGATION EQUIPMENT SCHEDULE

SYMBOL	MANUFACTURER/MODEL/DESCRIPTION	QTY	PSI
	HUNTER PRO-S-06-PRS40-CV ADJ TURF SPRAY, 40PSI REGULATED 6" POP-UP, DRAIN CHECK VALVE	12	40
	NETAFIM LVCZS8010075-HF PRE-ASSEMBLED CONTROL ZONE KIT, WITH 1" SERIES 80 CONTROL VALVE, 3/4" DISC FILTER, AND HIGH FLOW PRESSURE REGULATOR 4.5GPM TO 17.6GPM.	1	
	AREA TO RECEIVE DRIPLINE NETAFIM TLHCVR3-12 (12) TECHLINE HCVRX PRESSURE COMPENSATING LANDSCAPE DRIPLINE WITH CHECK VALVE AND ANTI-SIPHON FEATURE. 0.33GPH EMITTERS AT 12.0" O.C. DRIPLINE LATERALS SPACED AT 12.0" APART, WITH EMITTERS OFFSET FOR TRIANGULAR PATTERN. 17MM.	1,833 S.F.	
	HUNTER ICV-G 1", 1-1/2", 2", AND 3" PLASTIC ELECTRIC REMOTE CONTROL VALVES, GLOBE CONFIGURATION, WITH NPT THREADED INLET/OUTLET, FOR COMMERCIAL/MUNICIPAL USE.	2	
	HUNTER ICV-G 1" 1", 1-1/2", 2", AND 3" PLASTIC ELECTRIC MASTER VALVE, GLOBE CONFIGURATION, WITH NPT THREADED INLET/OUTLET, FOR COMMERCIAL/MUNICIPAL USE.	1	
	ZURN 975XL 1" REDUCED PRESSURE BACKFLOW DEVICE	1	
	RAIN BIRD ESP8XMEF 8 STATION CAPABLE COMMERCIAL CONTROLLER. MOUNTED ON A PLASTIC WALL MOUNT. FLOW SENSING AND WATER MANAGEMENT CAPABILITIES	1	
	RAIN BIRD WR2-RFC WIRELESS RAIN AND FREEZE SENSOR COMBO. INCLUDES 1 RECEIVER AND 1 RAIN/FREEZE SENSOR TRANSMITTER.	1	
	WATER METER 1"	1	
	IRRIGATION LATERAL LINE: BLU-LOCK AND PVC CLASS 200 BLU-LOCK PIPE, AS MANUFACTURED BY HYDRO RAIN, 1/2" TO 1", THEN PVC CLASS 200 FOR 1-1/4" AND LARGER.	247.4 L.F.	
	IRRIGATION MAINLINE: PVC SCHEDULE 40 PVC SCHEDULE 40 IRRIGATION PIPE.	20 L.F.	
	PIPE SLEEVE: PVC SCHEDULE 40	20 L.F.	



IRRIGATION DESIGN BUILD NOTES

- CONTRACTOR TO COORDINATE ALL ELECTRICAL CONNECTIONS WITH CONWAY CORP TO PROVIDE A DIRECT WIRED CONNECTION POINT WITH NO EXPOSED OR EXTERNAL PLUGS. USE CONTROLLER WITH INTERNAL TRANSFORMER.
- WATER METER CONNECTION IS TO BE COORDINATED WITH CONWAY CORPORATION AND PAYMENT FOR THE METER SHALL BE A PART OF THIS BID.
- CONTRACTOR SHALL CAREFULLY VERIFY A MINIMUM DYNAMIC WATER PRESSURE OF 85psi WITH A FLOW RATE OF 45gpm AT THE WATER METER LOCATION PRIOR TO INSTALLATION. CONTRACTOR SHALL NOTIFY THE LANDSCAPE ARCHITECT IF WATER PRESSURE IS LESS THAN OR SIGNIFICANTLY HIGHER THAN NOTED.
- PLEASE NOTE: IF PRESSURE IS NOT SATISFACTORY THERE MAY BE A NEED FOR A BOOSTER PUMP TO ENHANCE PERFORMANCE OF THE SYSTEM. THE LANDSCAPE CONTRACTOR SHALL REPORT PRESSURE FINDINGS TO THE LANDSCAPE ARCHITECT PRIOR TO INSTALLATION OF THE SYSTEM FOR DETERMINATION OF ANY BOOSTER NEEDS.
- CONTRACTOR SHALL BE RESPONSIBLE FOR DAMAGE TO ALL UTILITIES DURING THE INSTALLATION. CONTRACTOR SHALL SEEK ASSISTANCE FROM THE LOCAL UTILITIES IN THE LOCATION OF THE UTILITIES PRIOR TO EXCAVATION.
- CONTRACTOR SHALL OBTAIN ANY REQUIRED PERMITS, ADHERE TO ALL MUNICIPAL CODES AND FOLLOW STANDARD AND ACCEPTED LOCAL PRACTICES.
- AN AUTOMATIC DRAIN VALVE SHALL BE INSTALLED AT THE LOWEST PORTION OF EACH ZONE AND AT 100' INTERVALS ON THE MAINLINE (SEE DETAIL).
- VALVE WIRING SHALL BE 14 GAUGE SINGLE STRAND COPPER DIRECT BURIAL IRRIGATION WIRE. PROVIDE (1) ONE WHITE WIRE AS THE COMMON FOR ALL THE VALVES. PROVIDE (1) ONE NON-WHITE WIRE FOR EACH OF THE ZONE VALVES. ALSO PROVIDE (1) ONE NON-WHITE WIRE FOR ALL THE VALVES TO BE USED AS A SPARE. ALL SPLICES SHALL BE WATERPROOF AND PLACED AT VALVE LOCATIONS ONLY.
- ALL LATERAL LINE PIPING SHALL BE CLASS 200 SDR 21 PVC. ALL MAINLINE PIPING SHALL BE SCHEDULE 40 PVC. ALL FITTINGS SHALL BE SCH. 40 TYPE 1. USE A PVC SOLVENT AND PRIMER AS RECOMMENDED/APPROVED BY THE PIPE MANUFACTURER. ALL MATERIAL AND EQUIPMENT SHALL BE OF DOMESTIC MANUFACTURER PROCEEDING WITH RELATED WORK.
- PLACE ALL PIPING ON THE PERIMETER OF LANDSCAPE AREAS WHERE POSSIBLE. PLACE VALVES IN PLANTING AREAS WHERE POSSIBLE. LIMIT TRENCHING AROUND EXISTING TREES AS MUCH AS POSSIBLE. BE AWARE OF THE LOCATION OF NEW TREES AND SHRUBS AND PLACE PIPING AWAY FROM THE ROOT BALLS.
- THERE SHALL BE A CLOSED LOOP MAINLINE AROUND THE PERIMETER OF THE PROPERTY TO AID IN BALANCE OF FLOWS AND PRESSURE, AND ALLOW FOR FUTURE EXPANSION OF THE SYSTEM.
- PROVIDE FOR WINTERIZATION BY THE BLOW OUT METHOD.
- COORDINATE LOCATION OF THE CONTROL BOX AND RAIN SENSOR WITH THE OWNER AND/OR ARCHITECT.
- PROVIDE 100% HEAD TO HEAD COVERAGE WITH EVEN PRECIPITATION RATE PER MANUFACTURERS RECOMMENDATIONS FOR ALL LANDSCAPE AREAS AND MAKE FINAL ADJUSTMENTS TO OBTAIN OPTIMAL PERFORMANCE. ALL PLANT BEDS SHALL BE ON SEPARATE ZONES FROM THE TURF AREAS.
- CONTRACTOR TO PROVIDE AND COORDINATE SERVICE TAP, LINE AND METER FOR IRRIGATION SYSTEM SERVICE.
- COMPACT BACK FILL IN ALL TRENCHES TO STANDARD SUB GRADE COMPACT ION REQUIREMENTS GIVEN IN SITE GRADING SPECIFICATIONS.
- CONTRACTOR IS RESPONSIBLE FOR SIZING ALL WIRING TO CONTROL VALVES. DIRECT BURIAL QUALITY WIRE WITH SEALED WATERPROOF CONNECTORS REQUIRED.
- INSTALL ALL EQUIPMENT IN ACCORDANCE WITH MANUFACTURERS DETAILS AND SPECIFICATIONS.
- WHEN TRENCHING UNDER THE DRIPLINE OF EXISTING TREES EXTREME CARE MUST BE GIVEN TO AVOID ROOT DAMAGE. IF AT ALL POSSIBLE AVOID TRENCHING INSIDE THE DRIPLINE BY GOING AROUND THE TREE RATHER THAN UNDER IT. IF TRENCHING MUST OCCUR UNDER THE DRIPLINE, USE EITHER TUNNELING OR HAND-DIGGING METHODS RATHER THAN A MECHANICAL TRENCHER. MINIMIZE THE IMPACTS OF ROOT SEVERING BY AVOIDING CONSTRUCTION DURING HOT, DRY WEATHER, KEEPING TREES WELL WATERED BEFORE AND AFTER DIGGING AND COVERING ROOTS WITH SOIL OR MULCH AS SOON AS POSSIBLE.

Arkansas One Call

 Know what's below.
 Call before you dig.

1000 Ledgewood Dr.
 Conway, Arkansas 72034

Crafton Tull
 engineering | surveying
 501.328.3316 | 501.328.3325 | www.craftontull.com

CERTIFICATE OF AUTHORIZATION:

1/8" = 1'

ROUNDBOUT LANDSCAPE DESIGN
 COLLEGE AVE. AND SALEM RD.
 CONWAY, ARKANSAS

Key Plan

No.	Description	Date
1	ADDED ELECTRICAL CONDUIT RUNS FOR IRRIG. CONTROLS AND ART DISPLAY LIGHTING	06/12/2017

This document, and the ideas and designs incorporated herein, as an instrument of professional service, is the property of Crafton, Tull & Associates, Inc., and is not to be used, in whole or in part, for any other project, without the written authorization of Crafton, Tull & Associates, Inc.

PROJECT NO: 167069_02
 ISSUE DATE: 05/11/2017
 CONTACT: B. Williams
 CHECKED BY:
 ISSUED FOR CONSTRUCTION
 No. 5026

© 2017 Crafton, Tull & Associates, Inc.

IRRIGATION PLAN 6/12/17

I1 R1

DRAWING CRAFTON TULL & ASSOCIATES, INC. 501.328.3316. 06/12/2017. 11:28 AM. FILED BY: LON M. ALLEN (LAD-COPY)

