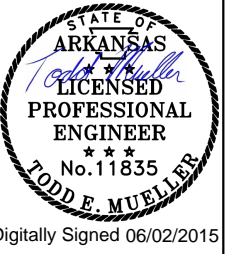


6/2/2015 1:38:16 PM
 WORKSPACE: AHTD
 L:\2012\1201550 - Contr-ellField Access\Drawings\6TH_ST\6TH_INDEX.dgn
 REVISION DATE:

INDEX OF SHEETS				
SHEET NO.	TITLE	BRIDGE NO.	DRAWING NO.	DATE
1	TITLE SHEET			
2	INDEX OF SHEETS AND GENERAL NOTES			
3-13	TYPICAL SECTIONS OF IMPROVEMENT			
14-15	INTERSECTION DETAILS			
16-22	SPECIAL DETAILS			
23-29	TEMPORARY EROSION CONTROL DETAILS			
30-37	MAINTENANCE OF TRAFFIC			
38-42	PERMANENT PAVEMENT MARKINGS			
43	SOIL BORING LOGS			
44-45	SURVEY CONTROL DETAILS			
46	PLAN AND PROFILE - I40			
47	PLAN AND PROFILE - 6TH ST.			
48	PLAN AND PROFILE - 6TH ST.			
49	PLAN AND PROFILE - 6TH ST./ELSINGER BLVD.			
50	PLAN AND PROFILE - 6TH ST./ELSINGER BLVD.			
51	PLAN AND PROFILE - AMITY RD.			
52	PLAN AND PROFILE - AMITY RD.			
53	PLAN AND PROFILE - CIRCULATORY ROADWAY			
54	PLAN AND PROFILE - DRIVEWAY 1			
55	DRIVEWAY PROFILES			
56	PLAN AND PROFILE - MOT			
57	PLAN AND PROFILE - MOT			
58-59	SIGNING QUANTITIES			
60-62	PERMANENT SIGNING PLANS			
63	SCHEDULE OF BRIDGE QUANTITIES	07345	57062	
64	SHEET 1 OF 4 - LAYOUT OF BRIDGE OVER I40	07345	57063	
65	SHEET 2 OF 4 - LAYOUT OF BRIDGE OVER I40	07345	57064	
66	SHEET 3 OF 4 - LAYOUT OF BRIDGE OVER I40	07345	57065	
67	SHEET 4 OF 4 - LAYOUT OF BRIDGE OVER I40	07345	57066	
68	SHEET 1 OF 3 - BORING LOG DETAILS	07345	57067	
69	SHEET 2 OF 3 - BORING LOG DETAILS	07345	57068	
70	SHEET 3 OF 3 - BORING LOG DETAILS	07345	57069	
71	SHEET 1 OF 4 - DETAILS OF END BENT NO. 1	07345	57070	
72	SHEET 2 OF 4 - DETAILS OF END BENT NO. 3	07345	57071	
73	SHEET 3 OF 4 - DETAILS OF END BENTS	07345	57072	
74	SHEET 4 OF 4 - DETAILS OF END BENTS	07345	57073	
75	DETAILS OF TRANSITIONAL APPROACH RAILING	07345	57074	
76	SHEET 1 OF 3 - DETAILS OF INTERMEDIATE BENT NO. 2	07345	57075	
77	SHEET 2 OF 3 - DETAILS OF INTERMEDIATE BENT NO. 2	07345	57076	
78	SHEET 3 OF 3 - DETAILS OF INTERMEDIATE BENT NO. 2	07345	57077	
79	SHEET 1 OF 11 - DETAILS OF 212'-0" CONTINUOUS COMPOSITE PLATE GIRDER UNIT	07345	57078	
80	SHEET 2 OF 11 - DETAILS OF 212'-0" CONTINUOUS COMPOSITE PLATE GIRDER UNIT	07345	57079	
81	SHEET 3 OF 11 - DETAILS OF 212'-0" CONTINUOUS COMPOSITE PLATE GIRDER UNIT	07345	57080	
82	SHEET 4 OF 11 - DETAILS OF 212'-0" CONTINUOUS COMPOSITE PLATE GIRDER UNIT	07345	57081	
83	SHEET 5 OF 11 - DETAILS OF 212'-0" CONTINUOUS COMPOSITE PLATE GIRDER UNIT	07345	57082	
84	SHEET 6 OF 11 - DETAILS OF 212'-0" CONTINUOUS COMPOSITE PLATE GIRDER UNIT	07345	57083	
85	SHEET 7 OF 11 - DETAILS OF 212'-0" CONTINUOUS COMPOSITE PLATE GIRDER UNIT	07345	57084	
86	SHEET 8 OF 11 - DETAILS OF 212'-0" CONTINUOUS COMPOSITE PLATE GIRDER UNIT	07345	57085	
87	SHEET 9 OF 11 - DETAILS OF 212'-0" CONTINUOUS COMPOSITE PLATE GIRDER UNIT	07345	57086	
88	SHEET 10 OF 11 - DETAILS OF 212'-0" CONTINUOUS COMPOSITE PLATE GIRDER UNIT	07345	57087	
89	SHEET 11 OF 11 -- DETAILS OF 212'-0" CONTINUOUS COMPOSITE PLATE GIRDER UNIT	07345	57088	
90	DETAILS OF ELASTOMERIC BEARINGS	07345	57089	
91	ELECTRICAL LEGEND	07345	57090	
92	BRIDGE LIGHTING INSTALLATION PLAN	07345	57091	
93	SHEET 1 OF 2 - ELECTRICAL DETAILS	07345	57092	
94	SHEET 2 OF 2 - ELECTRICAL DETAILS	07345	57093	
95	SHEET 1 OF 5 - DETAILS OF RETAINING WALLS	07345	57094	
96	SHEET 2 OF 5 - DETAILS OF RETAINING WALLS	07345	57095	
97	SHEET 3 OF 5 - DETAILS OF RETAINING WALLS	07345	57096	
98	SHEET 4 OF 5 - DETAILS OF RETAINING WALLS	07345	57097	
99	SHEET 5 OF 5 - DETAILS OF RETAINING WALLS	07345	57098	
100	SHEET 1 OF 4 - BORING LOG DETAILS RETAINING WALL NOS. 3 & 4	07345	57099	
101	SHEET 2 OF 4 - BORING LOG DETAILS RETAINING WALL NOS. 3 & 4	07345	57100	
102	SHEET 3 OF 4 - BORING LOG DETAILS RETAINING WALL NOS. 3 & 4	07345	57101	
103	SHEET 4 OF 4 - BORING LOG DETAILS RETAINING WALL NOS. 3 & 4	07345	57102	
104	STANDARD DETAILS FOR EMBANKMENT CONSTRUCTION AND BACKFILL AT BRIDGE ENDS		55000	2/27/14
105	STANDARD DETAILS FOR CONCRETE RIPRAP		55002	2/27/14
106	STANDARD DETAILS FOR PERMANENT STEEL BRIDGE DECK FORMS FOR STEEL & CONCRETE GIRDER SPANS		55005	2/27/14
107	STANDARD DETAILS FOR TYPE D BRIDGE NAME PLATE		55010	2/27/14
108	STANDARD DETAILS FOR STEEL H-PILES AND PILE ENCASEMENTS		55020	2/27/14
109	CONCRETE DITCH PAVING		CDP-1	11/17/10
110	CURBING DETAILS		CG-1	11/29/07
111	DETAILS OF DRIVEWAYS & ISLANDS		DR-1	2/27/14
112	FLARED END SECTION		FES-1	10/18/96

DATE REVISED	DATE FILMED	DATE REVISED	DATE FILMED	FED. RD. DIST. NO.	STATE	FED. AID PROJ. NO.	SHEET NO.	TOTAL SHEETS
6-1-2015				6	ARK.			
						JOB NO.	080517	2
						INDEX OF SHEETS AND GENERAL NOTES		

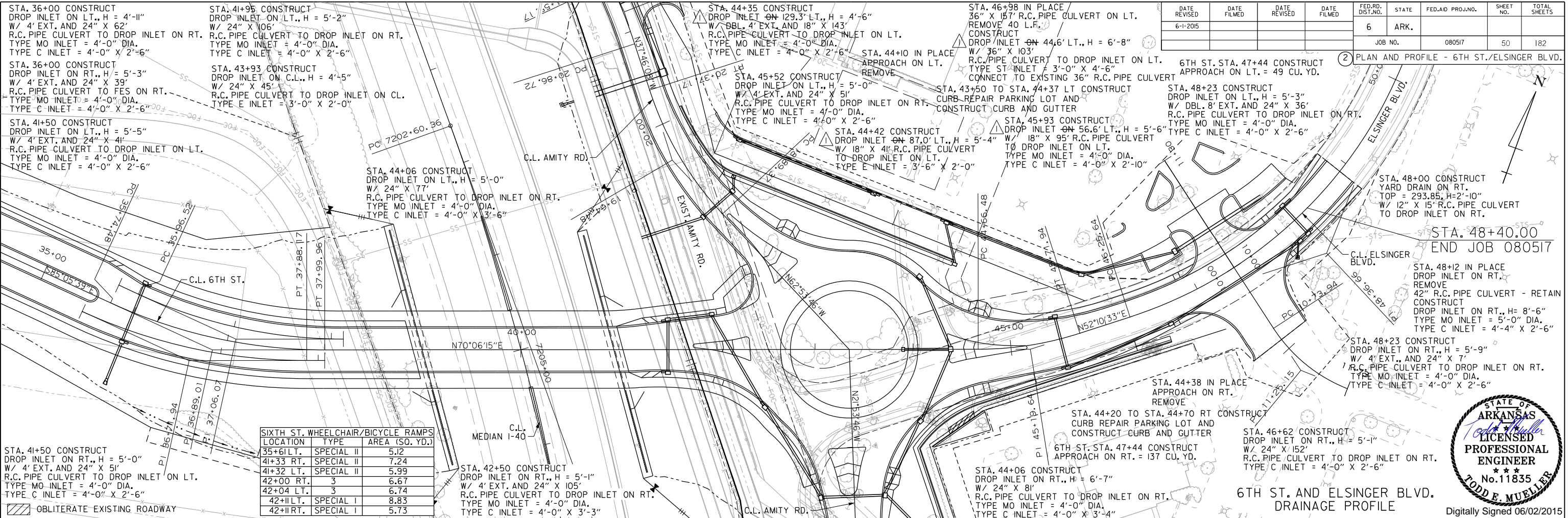


INDEX OF SHEETS				
SHEET NO.	TITLE	BRIDGE NO.	DRAWING NO.	DATE
113	FLARED END SECTION		FES-2	10/18/96
114	DETAILS OF DROP INLETS & JUNCTION BOXES		FPC-9	11/16/01
115	DETAILS OF DROP INLETS		FPC-9D	8/22/02
116	DETAILS OF DROP INLETS (TYPE C)		FPC-9E	8/22/02
117	DETAILS OF DROP INLET (TYPE MO)		FPC-9M	8/22/02
118	DETAILS OF DROP INLET & JUNCTION BOX (TYPE ST)		FPC-9S	7/26/12
119	CONCRETE PIPE CULVERT FILL HEIGHTS & BEDDING		PCC-1	2/27/14
120	METAL PIPE CULVERT FILL HEIGHTS & BEDDING		PCM-1	2/27/14
121	PLASTIC PIPE CULVERT (PVC F949) (NOT USED)		PCP-2	2/27/14
122	PAVEMENT MARKING DETAILS		PM-1	9/12/13
123	STANDARD HIGHWAY SIGNS AND SUPPORT ASSEMBLIES		SHS-1	9/12/13
124	U-CHANNEL POST ASSEMBLIES		SHS-2	2/27/14
125	DETAIL OF BREAKAWAY SIGN SUPPORTS FOR GUIDE SIGNS		SHS-3	9/12/13
126	DETAIL OF BREAKAWAY SIGN SUPPORTS FOR STANDARD SIGNS		SHS-4	9/12/13
127	DETAILS OF GUIDE SIGN PANELS		SHS-5	9/12/13
128	MOUNTING DETAILS FOR DEMOUNTABLE LEGEND ON GUIDE SIGNS		SHS-6	9/12/13
129	DETAILS OF SPECIAL ITEMS		SI-1	9/12/13
130	REINFORCED CONCRETE RETAINING WALL (WITHOUT LIVE LOAD SURCHARGE)		SI-2	2/27/14
131	STANDARD TRAFFIC CONTROLS FOR HIGHWAY CONSTRUCTION		TC-1	12/15/11
132	STANDARD TRAFFIC CONTROLS FOR HIGHWAY CONSTRUCTION		TC-2	9/12/13
133	STANDARD TRAFFIC CONTROLS FOR HIGHWAY CONSTRUCTION		TC-3	10/15/09
134	STANDARD TRAFFIC CONTROLS FOR HIGHWAY CONSTRUCTION - TEMPORARY PRECAST BARRIER		TC-4	2/27/14
135	STANDARD TRAFFIC CONTROLS FOR HIGHWAY CONSTRUCTION - TEMPORARY PRECAST BARRIER		TC-5	10/15/09
136	TEMPORARY EROSION CONTROL DEVICES		TEC-1	12/15/11
137	TEMPORARY EROSION CONTROL DEVICES		TEC-3	11/3/94
138	TEMPORARY EROSION CONTROL DEVICES		TEC-4	7/26/12
139	WIRE FENCE TYPE A AND B		WF-1	8/22/02
140	WIRE FENCE WATER GAPS		WF-2	4/20/79
141	WHEELCHAIR RAMPS NEW CONSTRUCTION AND ALTERATIONS		WR-1	11/10/05
142-182	CROSS SECTIONS			

- GENERAL NOTES:
- GRADE LINE DENOTES FINISHED GRADE WHERE SHOWN ON PLANS.
 - ALL PIPE LINES, POWER, TELEPHONE, AND TELEGRAPH LINES TO BE MOVED OR LOWERED BY THE RESPECTIVE OWNERS AS PER AGREEMENT WITH SUCH OWNERS.
 - ANY EQUIPMENT OR APPURTENANCE THAT INTERFERES WITH THE PROPOSED CONSTRUCTION AND WHICH MAY BE THE PROPERTY OF UTILITY SERVICE ORGANIZATIONS SHALL BE MOVED BY THE OWNERS UNLESS OTHERWISE PROVIDED.
 - THE CONTRACTOR SHALL BE RESPONSIBLE FOR MAINTAINING U.S. MAILBOXES WITHIN THE PROJECT LIMITS IN SUCH A MANNER THAT THE PUBLIC MAY RECEIVE CONTINUED MAIL SERVICE. PAYMENT WILL BE CONSIDERED INCLUDED IN THE PRICE BID FOR THE VARIOUS BID ITEMS.
 - ALL LAND MONUMENTS LOCATED WITHIN THE CONSTRUCTION AREA SHALL BE PROTECTED IN ACCORDANCE WITH SECTION 107.12 OF THE STANDARD SPECIFICATIONS.
 - ALL TREES THAT DO NOT DIRECTLY INTERFERE WITH THE PROPOSED CONSTRUCTION SHALL BE SPARED AS DIRECTED BY THE ENGINEER. CARE AND DISCRETION SHALL BE USED TO INSURE THAT ALL TREES NOT TO BE REMOVED SHALL BE HARMED AS LITTLE AS POSSIBLE DURING THE CONSTRUCTION OPERATIONS.
 - THE CONTRACTOR SHALL BE RESPONSIBLE FOR PROVIDING A FENCE TO CONTROL LIVESTOCK IN AREAS WHERE PASTURES ARE SEVERED. WIRE FENCE MAY BE CONSTRUCTED INITIALLY, OR IN LIEU THEREOF, THE CONTRACTOR AT HIS OWN EXPENSE, MAY ELECT TO PROVIDE TEMPORARY FENCING SUITABLE TO CONTAIN LIVESTOCK.
 - THE EXISTING ASPHALT PAVEMENT TO BE REMOVED FROM THE REMAINING PAVEMENT SHALL BE SEPARATED BY SAWING ALONG A NEAT LINE. AFTER SAWING, THE PAVEMENT TO BE REMOVED SHALL BE CAREFULLY REMOVED IN A MANNER THAT WILL NOT DAMAGE THE PAVEMENT THAT IS TO REMAIN. ANY DAMAGE OF THE ASPHALT PAVEMENT THAT IS TO REMAIN IN PLACE SHALL BE REPAIRED AT THE CONTRACTOR'S EXPENSE.
 - ALL FLEXIBLE BASE AND ASPHALTIC PAVEMENT REMOVED SHALL BE PAID FOR UNDER PAY ITEM 210 - EXCAVATION AND EMBANKMENT, UNLESS OTHERWISE NOTED.
 - ALL PIPE SHALL BE CLASS III WITH TYPE 3 BEDDING UNLESS NOTED OTHERWISE.

REVISIONS		
DATE	REVISION	SHEET NUMBER
6/1/2015	ADDED REVISION BOX	2
6/1/2015	REVISED CONSTRUCT NOTES TO INCLUDE DISTANCE FROM CENTERLINE, INLET LOCATION	50
6/1/2015	REVISED CONSTRUCT NOTES TO INCLUDE DISTANCE FROM CENTERLINE	52
6/1/2015	REVISED REINFORCING STEEL IN BENT NO. 2	63
6/1/2015	REPLACED "M53" WITH "M322 TYPE A"	71
6/1/2015	REVISED B501 BAR LENGTH	77

INDEX OF SHEETS AND GENERAL NOTES



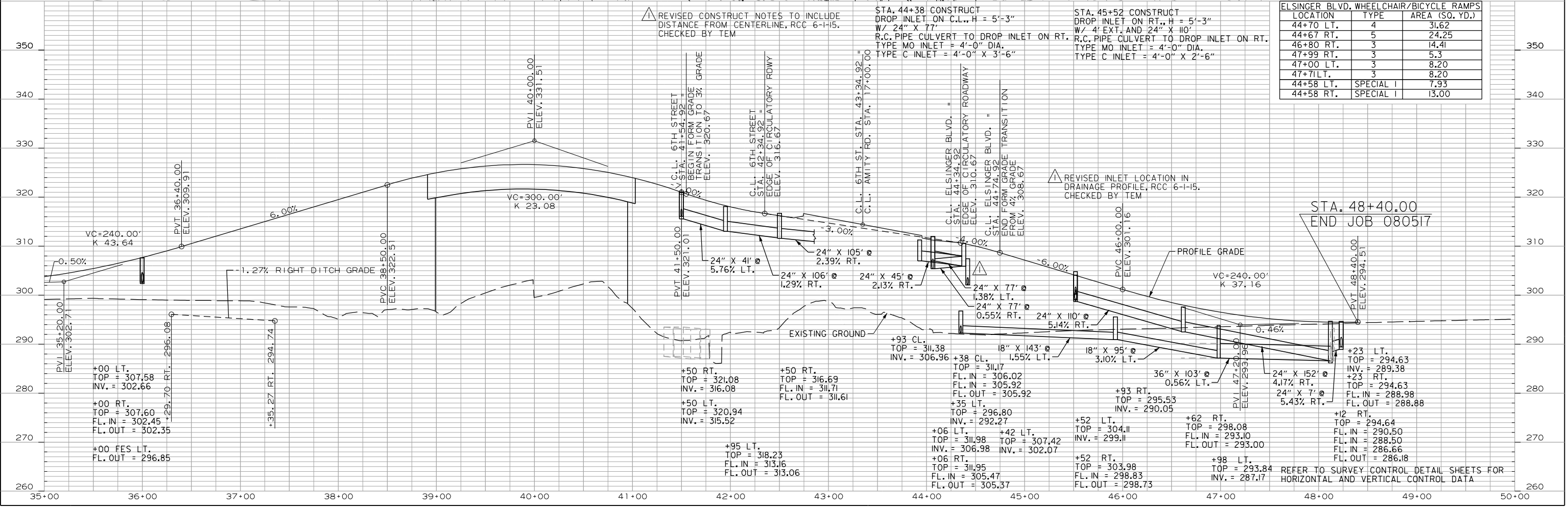
DATE REVISED	DATE FILMED	DATE REVISED	DATE FILMED	FED. RD. DIST. NO.	STATE	FED. AID PROJ. NO.	SHEET NO.	TOTAL SHEETS
6-1-2015				6	ARK.	080517	50	182

PLAN AND PROFILE - 6TH ST./ELSINGER BLVD.

LOCATION	TYPE	AREA (SQ. YD.)
35+61 LT.	SPECIAL II	5.12
41+33 RT.	SPECIAL II	7.24
41+32 LT.	SPECIAL II	5.99
42+00 RT.	3	6.67
42+04 LT.	3	6.74
42+11 LT.	SPECIAL I	8.83
42+11 RT.	SPECIAL I	5.73



6TH ST. AND ELSINGER BLVD. DRAINAGE PROFILE
Digitally Signed 06/02/2015



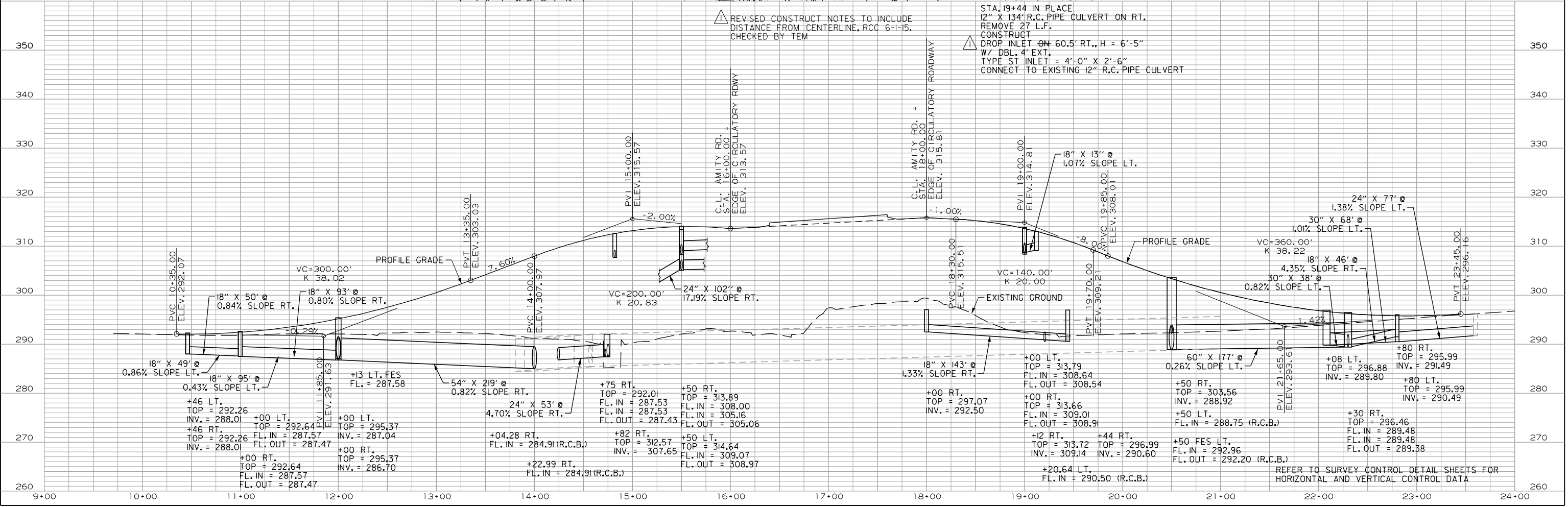
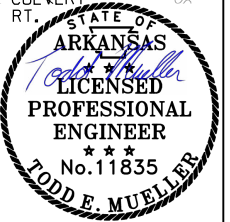
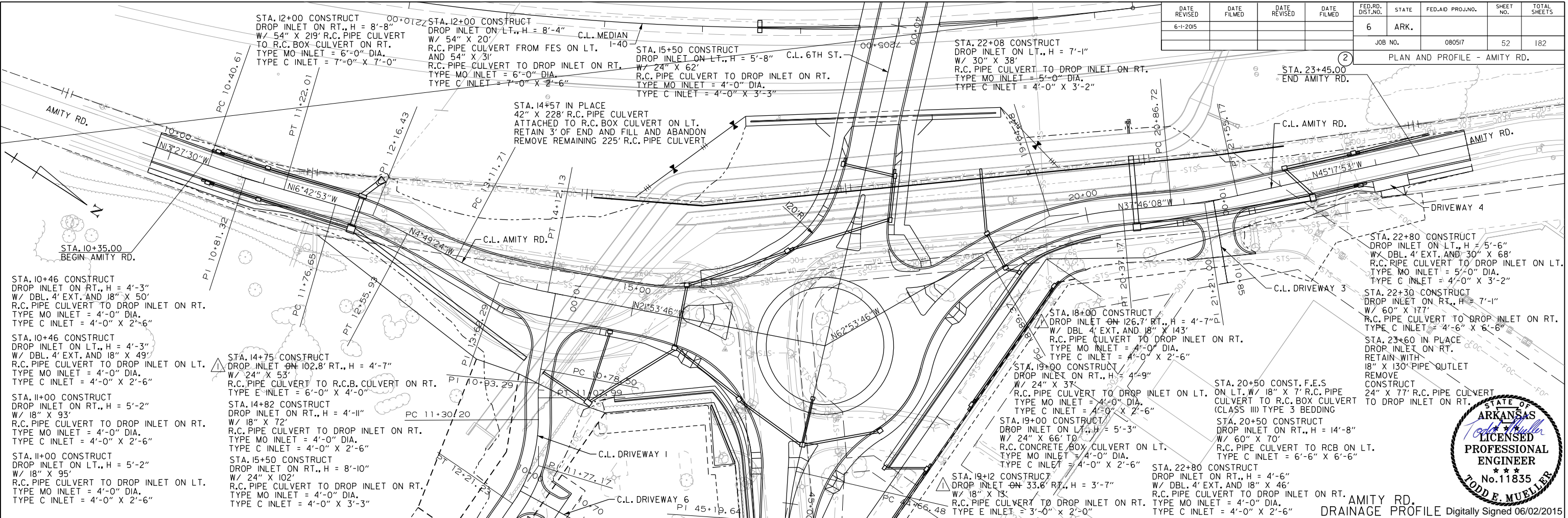
LOCATION	TYPE	AREA (SQ. YD.)
44+70 LT.	4	31.62
44+67 RT.	5	24.25
46+80 RT.	3	14.41
47+99 RT.	3	5.3
47+00 LT.	3	8.20
47+71 LT.	3	8.20
44+58 LT.	SPECIAL I	7.93
44+58 RT.	SPECIAL I	13.00

6/2/2015 1:37:17 PM
WORKSPACE: AHTD
L:\2012\01550 - CentrailField Access\Drawings\6TH ST. & 6TH PP. 6TH.DRAIN.02.dgn
REVISED DATE:

REFER TO SURVEY CONTROL DETAIL SHEETS FOR HORIZONTAL AND VERTICAL CONTROL DATA

DATE REVISED	DATE FILMED	DATE REVISED	DATE FILMED	FED. RD. DIST. NO.	STATE	FED. AID PROJ. NO.	SHEET NO.	TOTAL SHEETS
6-1-2015				6	ARK.	080517	52	182

PLAN AND PROFILE - AMITY RD.



6/2/2015 1:36:39 PM
 WORKSPACE: AHTD
 L:\2012\201550 - Contr-Field Access\Drawings\6TH-ST\6TH_PP_AMITY_DRAIN_01.dgn
 REVISION DATE:

DATE REVISED	DATE FILMED	DATE REVISED	DATE FILMED	FED. ROAD DIST. NO.	STATE	FED. AID PROJ. NO.	SHEET NO.	TOTAL SHEETS
6-1-15				6	ARK.			
				JOB NO.		080517	63	182
				① 07345		QUANTITIES		57062

SUMMARY OF ESTIMATED QUANTITIES FOR JOB 080517							
BRIDGE NO. CODE NO. NAME PLATE TITLE	UNIT OF STRUCTURE	ITEM NO.	SP-2	SP-4	SP-5	SP-6	
		ITEM	BRIDGE CONSTRUCTION ①	STEEL PILING (HP12x53) ②	DRILLED SHAFT (78" DIA.)	CROSSHOLE SONIC LOGGING (78" DIA.)	CORING DRILLED SHAFT
		UNIT	LUMP SUM	LINEAR FOOT	LINEAR FOOT	EACH	LINEAR FOOT
07345 X771 INTERSTATE 40	BENT NO. 1			481			
	BENT NO. 2				112	4	
	BENT NO. 3			442			
	212'-0" CONT. COMP. PLATE GIRDER UNIT	1					
	TOTALS FOR JOB NO. 08517		1	923	112	4	40

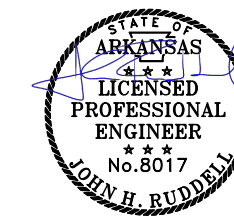
- ① For estimated quantities to be included in the Lump Sum Bid for the item "BRIDGE CONSTRUCTION", see Table below.
- ② Steel piles are required to be Grade 50 and have special points which will not be paid for directly but shall be considered subsidiary to the item "STEEL PILING (HP12x53)". Any preboring required for the installation of the piles shall also be considered subsidiary to the item "STEEL PILING (HP12x53)".

③ ITEM "BRIDGE CONSTRUCTION"																			
BRIDGE NO. CODE NO. NAME PLATE TITLE	UNIT OF STRUCTURE	ITEM NO.	801	802	802	803	804	804	806	806	807	SP-8 & 807	808	809	812	816	SP-3	SP-7	SP-12
		ITEM	UNCLASSIFIED EXCAVATION FOR STRUCTURES- BRIDGE	CLASS S CONCRETE - BRIDGE	CLASS (S/AE) CONCRETE - BRIDGE	CLASS I PROTECTIVE SURFACE TREATMENT	REINFORCING STEEL-BRIDGE (GRADE 60)	EPOXY COATED REINFORCING STEEL (GRADE 60)	METAL BRIDGE RAILING (TYPE H2)	TRANSITIONAL APPROACH RAILING	STRUCTURAL STEEL IN PLATE GIRDER SPANS (M270-GR. 50)	* PAINTING STRUCTURAL STEEL	ELASTOMERIC BEARINGS	SILICONE JOINT SEALANT	BRIDGE NAME PLATE (TYPE D)	CONCRETE RIPRAP	TEXTURED COATING FINISH	ARCHITECTURAL FINISH	BRIDGE LIGHTING
		UNIT	CUBIC YARD	CUBIC YARD	CUBIC YARD	GALLON	POUND	POUND	LINEAR FOOT	EACH	POUND	TON	CUBIC INCH	LINEAR FOOT	EACH	CUBIC YARD	SQUARE YARD	SQUARE YARD	LUMP SUM
07345 X771 INTERSTATE 40	BENT NO. 1			95.16		0.2	11,332		16.0	2	1,421	0.7	5400.0	83		7	61.2	6.0	
	BENT NO. 2	92.0		220.64		0.2	44,216	44,856	16.0	2	1,421	0.7	7313.0		7		388.1	44.0	
	BENT NO. 3			96.00			11,332						5400.0	83		7	61.2	6.0	
	212'-0" CONT. COMP. PLATE GIRDER UNIT				719.60	37.1		154,810	394.0		540,438	270.2			1		526.5	106.0	1
	TOTALS FOR JOB NO. 08517	92.0	411.80	719.60	37.5		66,880 67,520	154,810	426.0	4	543,280	271.6	18,113.0	166	1	14	1,037.0	162.0	1

* Paint shall conform to Federal Standard 595B, Color Chip No. 27038, Black.

- ③ The Summary of Estimated Bridge Quantities is provided for informational purposes only. This Summary is to be used only as a comparison to the Contractor's independent material take-off. The Contractor may not rely upon or make any claim against the Owner or the Engineer with respect to the accuracy of the estimated Bridge Quantities. The Contractor will remain solely responsible for the estimation of the materials necessary to complete the project.

△ Revised reinforcing steel in Bent No. 2, DRG 6-1-15. Checked by JHR

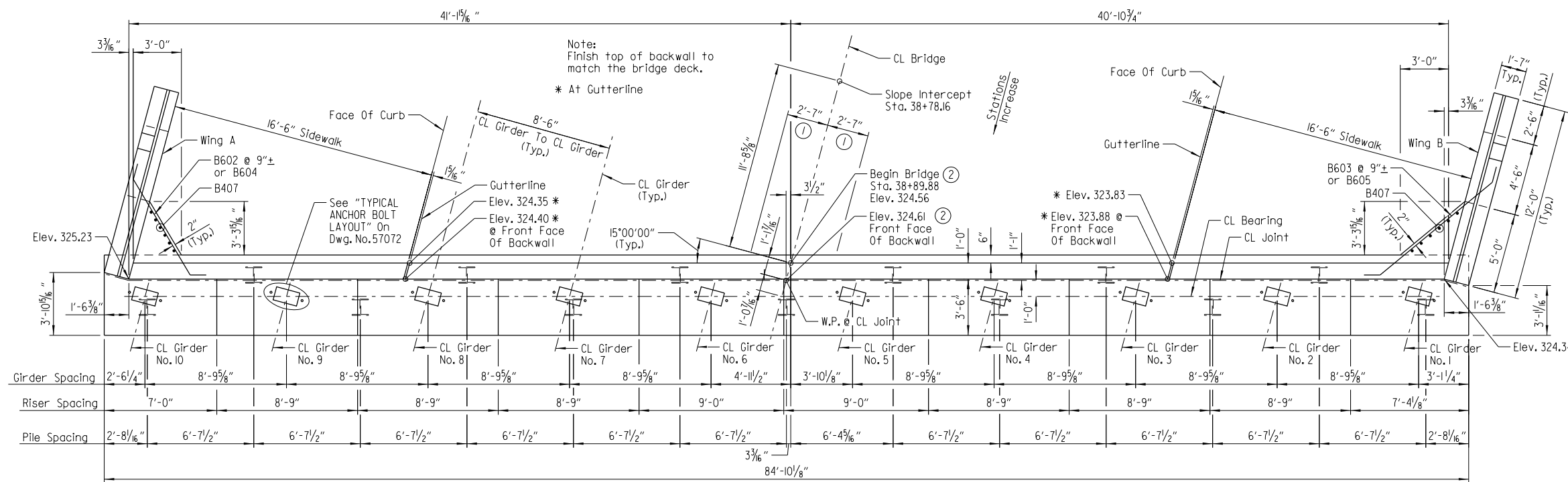


Digitally Signed 06/01/2015
BRIDGE ENGINEER

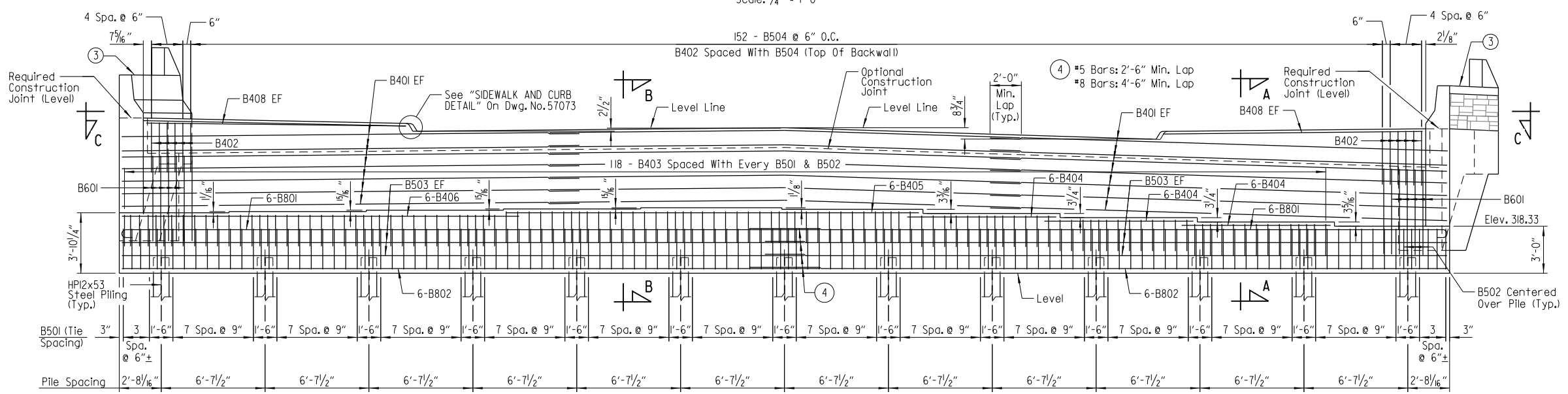
SCHEDULE OF BRIDGE QUANTITIES
I-40/6TH ST. OVERPASS
(CONWAY) (S)
FAULKNER COUNTY
ROUTE SEC.
ARKANSAS STATE HIGHWAY COMMISSION
LITTLE ROCK, ARK.

DRAWN BY: DRG DATE: MAR. 2015 FILENAME: B080517_0.dgn
CHECKED BY: JHR DATE: MAY 2015 SCALE: No Scale
DESIGNED BY: DRG DATE: MAR. 2015
BRIDGE NO. 07345 DRAWING NO. 57062

DATE REVISED	DATE FILMED	DATE REVISED	DATE FILMED	FED. ROAD DIST. NO.	STATE	FED. AID PROJ. NO.	SHEET NO.	TOTAL SHEETS
6-1-15				6	ARK.			
						JOB NO.	080517	71
						07345	END BENT DETAILS	57070



PLAN - END BENT NO. 1
Scale: 1/4" = 1'-0"



ELEVATION - END BENT NO. 1
(Looking Back)
Scale: 1/4" = 1'-0"

GENERAL NOTES

End bent piling shall not be driven until the waiting period has elapsed. See LAYOUT for more information.

All concrete shall be Class "S" and be poured in the dry. All exposed corners to be chamfered 3/4" unless otherwise noted.

All reinforcing steel shall conform to AASHTO M31 or M322 Type A, Gr. 60 (Yield Strength = 60,000 psi).

Structural steel in end bents shall be AASHTO M270, Gr. 50 and shall be paid for as "BRIDGE CONSTRUCTION." Structural Steel shall be cleaned and painted in accordance with Section 807. The color of the paint shall be Black and shall match Fed. Std. 595B, Color Chip No. 27038.

If anchor bolts are drilled into cap, top reinforcing bars shall be properly placed to avoid damage.

For additional information, see LAYOUT.

Class I Protective Surface Treatment shall be applied to the top of backwall. Class 3 Textured Coating shall be applied in accordance with SP "TEXTURED COATING FINISH".

LEGEND
EF = Each Face

NOTES:
For "BAR LIST" & "BAR BENDING DIAGRAMS", see Dwg. No. 57072
For "SECTION A-A", "B-B", & "VIEW C-C", see Dwg. No. 57072
For details of wing & rail, see Dwg. No. 57073
For details of elastomeric bearing pads, see Dwg. No. 57089

Note:
The Backwall Above The Required Construction Joint Shall Not Be Poured Until The Girders Are In Place. Backwall May Be Placed Prior To Placing The Adjacent Concrete Deck Only If The Optional Backwall Construction Joint Is Used. See "DETAILS FOR BLOCKING EXPANSION JOINT DEVICE" On Dwg. No. 57087 For Additional Information.

Replaced "M53" with "M322 Type A", DRG 6-1-15. Checked by JHR

- ① See "ROUNDING DETAIL" on dwg. no. 57078
- ② Measured to Working Point - See "ROUNDING DETAIL" on dwg. no. 57078
- ③ Metal railing not shown for clarity. For details see dwg. no. 57086

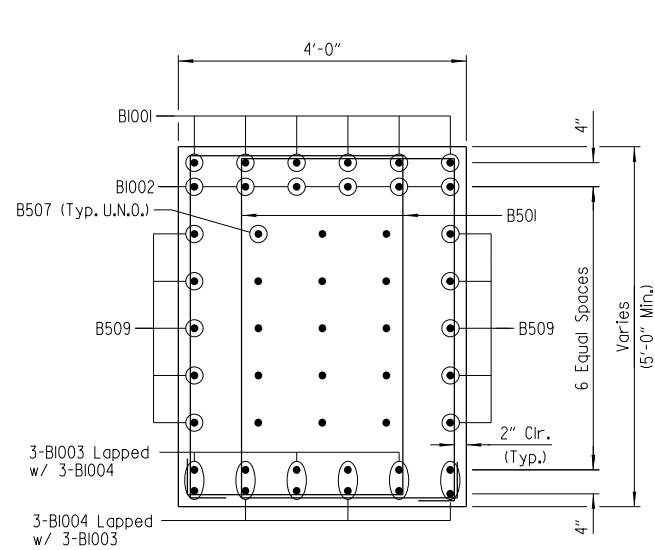


SHEET 1 OF 4
DETAILS OF END BENT NO. 1
ROUTE SEC.
ARKANSAS STATE HIGHWAY COMMISSION
LITTLE ROCK, ARK.

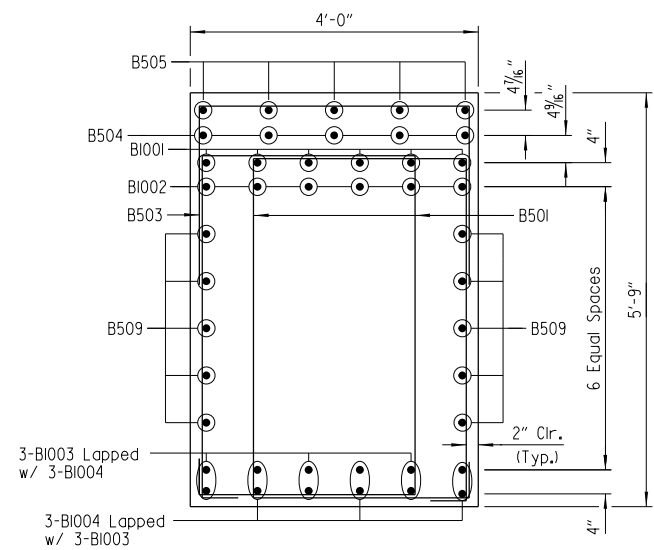
DRAWN BY: HEW DATE: MAR. 2015 FILENAME: B080517_A1.dgn
CHECKED BY: LIC DATE: APR. 2015 SCALE: As Shown
DESIGNED BY: SRY DATE: JAN. 2015
BRIDGE NO. 07345 DRAWING NO. 57070

DRGNO: 6/1/2015 12:39 PM
 WORKSPACE: AHTD Bridge
 L:\2012\201590 - Centrell\Field Access\Drawings\6TH_ST\B080517_A1.dgn
 REVISED DATE:

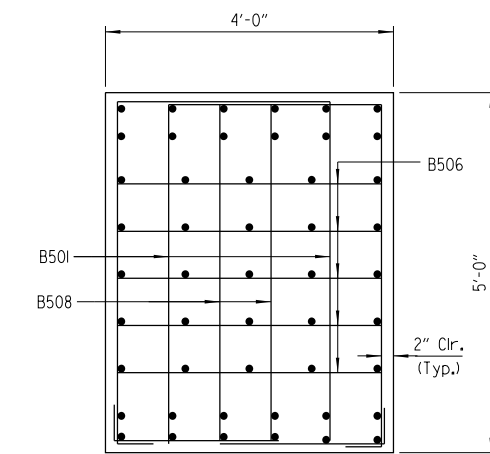
DATE REVISED	DATE FILMED	DATE REVISED	DATE FILMED	FED. ROAD DIST. NO.	STATE	FED. AID PROJ. NO.	SHEET NO.	TOTAL SHEETS
6-1-15				6	ARK.	080517	77	182
						JOB NO.	07345	INT. BENT DETAILS
								57076



SECTION A-A
Scale: 3/4" = 1'-0"



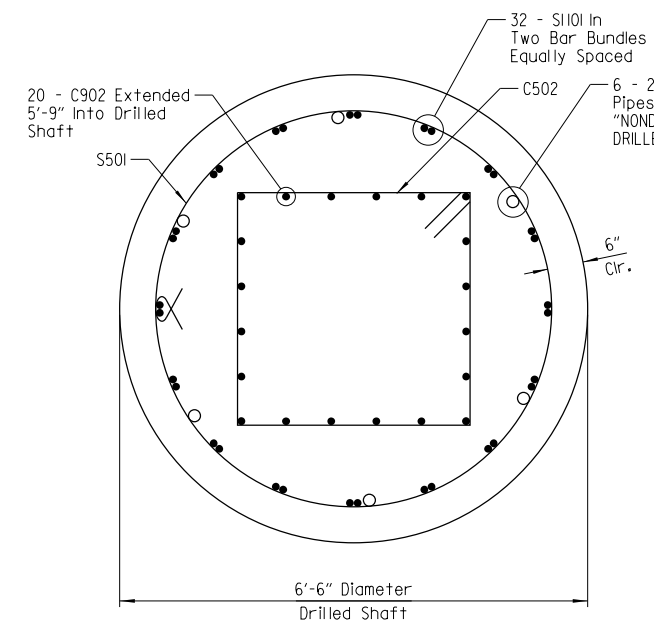
SECTION B-B
Scale: 3/4" = 1'-0"



VIEW F-F
Scale: 3/4" = 1'-0"

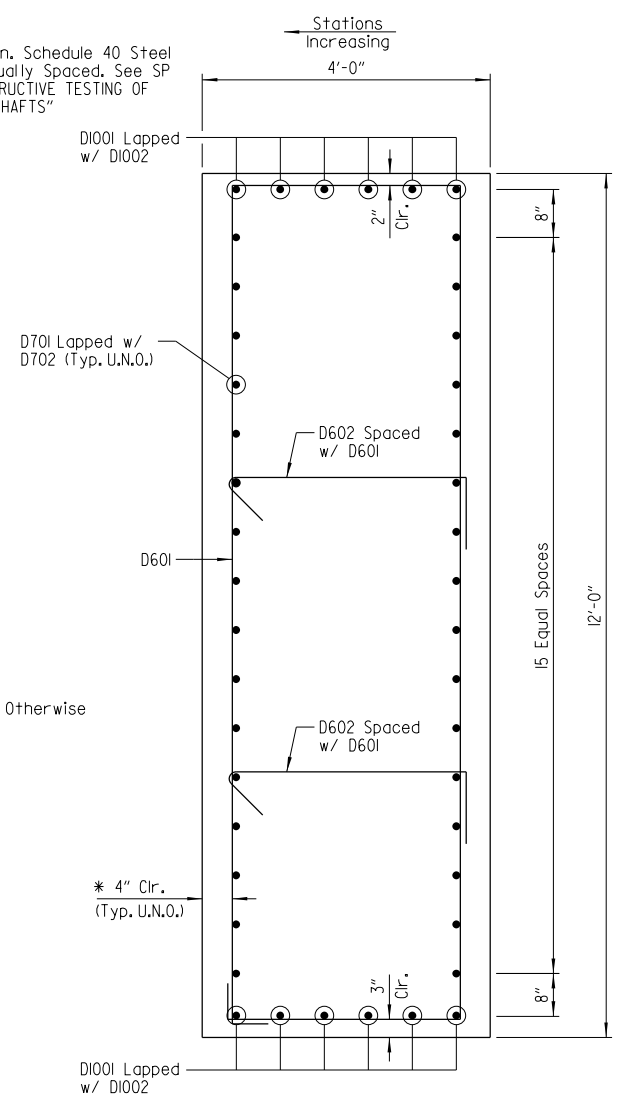
Revised B501 bar length, DRG 6-1-15.
Checked by JHR

BAR LIST - PER BENT					
MARK	NO. REQ'D	LENGTH	"A"	"B"	P.D.
B501	226	15'-10"	3'-0"	4'-8"	2 1/2"
B502	16	12'-9"	3'-8"	4'-8"	2 1/2"
B503	53	8'-6"	3'-8"	2'-6"	2 1/2"
B504	5	52'-2"			Str.
B505	5	17'-2"			Str.
B506	10	8'-5"	3'-7"	2'-6"	2 1/2"
B507	30	13'-6"			Str.
B508	4	9'-5"	4'-7"	2'-6"	2 1/2"
B509	20	42'-11"			Str.
B1001	12	48'-4"			10"
B1002	12	46'-9"			Str.
B1003	12	52'-1"			Str.
B1004	12	37'-7"			Str.
C501	68	12'-0"	2'-10"	2'-10"	3 3/4"
C502	72	14'-8"	3'-6"	3'-6"	3 3/4"
C901	80	16'-9"			Str.
C902	80	17'-7"			Str.
D601	121	31'-0"	3'-4"	11'-7"	4 1/2"
D602	242	4'-8"			4 1/2"
D603	32	7'-10"	3'-2"	2'-6"	4 1/2"
D604	8	11'-7"			Str.
D701	32	48'-1"			Str.
D702	32	34'-1"			Str.
D1001	12	48'-1"			Str.
D1002	12	40'-9"			Str.
S501	220	18'-8"			3 3/4"
S1101	128	27'-8"			Str.

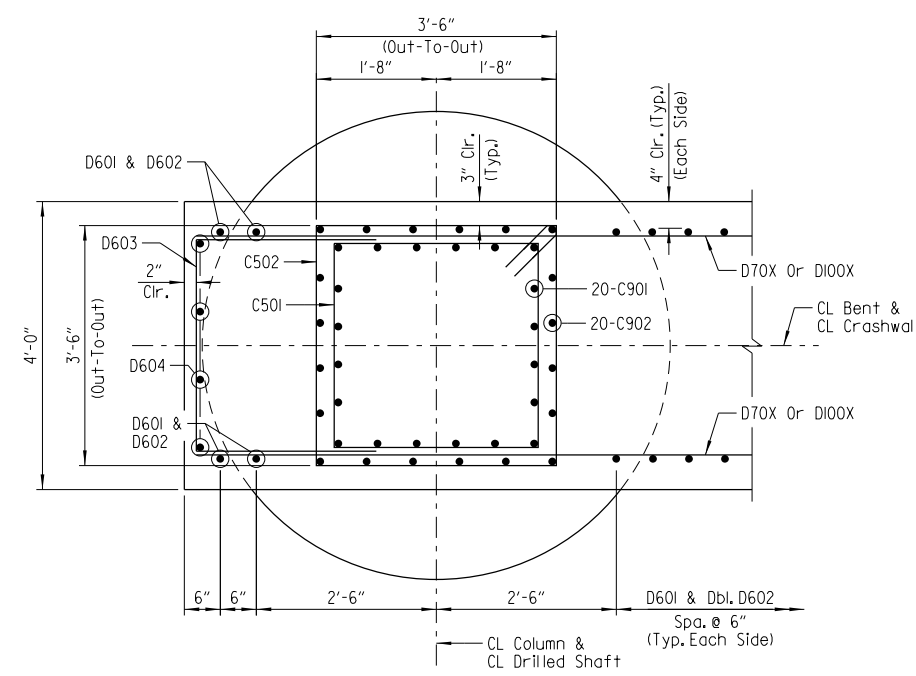


SECTION D-D
Scale: 3/4" = 1'-0"

LEGEND
U.N.O. = Unless Noted Otherwise



SECTION G-G
Scale: 3/4" = 1'-0"



SECTION H-H
Scale: 3/4" = 1'-0"

Non-Pay Item - Subsidiary to SP "DRILLED SHAFT FOUNDATIONS".

GENERAL NOTES

All concrete shall be Class "S" with a minimum 28-day compressive strength $f'_c = 3500$ psi. Concrete shall be poured in the dry and all exposed corners shall be chamfered 3/4" unless otherwise noted.

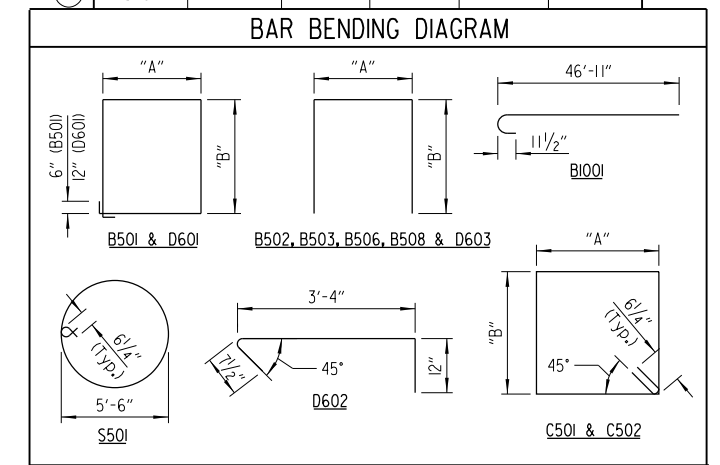
All reinforcing steel shall conform to AASHTO M31 or M322 Type A, Grade 60 (Yield Strength = 60,000 psi) except as noted otherwise.

Reinforcing bars in top of cap shall be properly placed to avoid interference with anchor bolts or sheet metal sleeves.

Concrete and reinforcing steel in drilled shafts will not be paid for directly but will be included in the unit price of "DRILLED SHAFT (78" Dia.)".

For construction methods, materials, measurement and payment of drilled shafts, see SP "DRILLED SHAFT FOUNDATIONS".

For additional information, see Layout.



NOTE: Dimensions of bars are out-to-out.



SHEET 2 OF 3
DETAILS OF INTERMEDIATE BENT NO. 2
ROUTE SEC.
ARKANSAS STATE HIGHWAY COMMISSION
LITTLE ROCK, ARK.

DRAWN BY: HEW DATE: FEB. 2015 FILENAME: B080517_B2.dgn
CHECKED BY: JHR DATE: MAR. 2015 SCALE: As Shown
DESIGNED BY: DRG DATE: JAN. 2015
BRIDGE NO. 07345 DRAWING NO. 57076

Digitally Signed 06/01/2015
BRIDGE ENGINEER

DRGNO: 6/1/2015 12:39 PM
 WORKSPACE: AHTD Bridge
 L:\2012\201590 - Centrell\Field Access\Drawings\6TH_ST\B080517_B2.dgn
 REVISED DATE:

* Maintain 4" clr. side cover to avoid conflict w/C902 bars. See "SECTION H-H" for details.