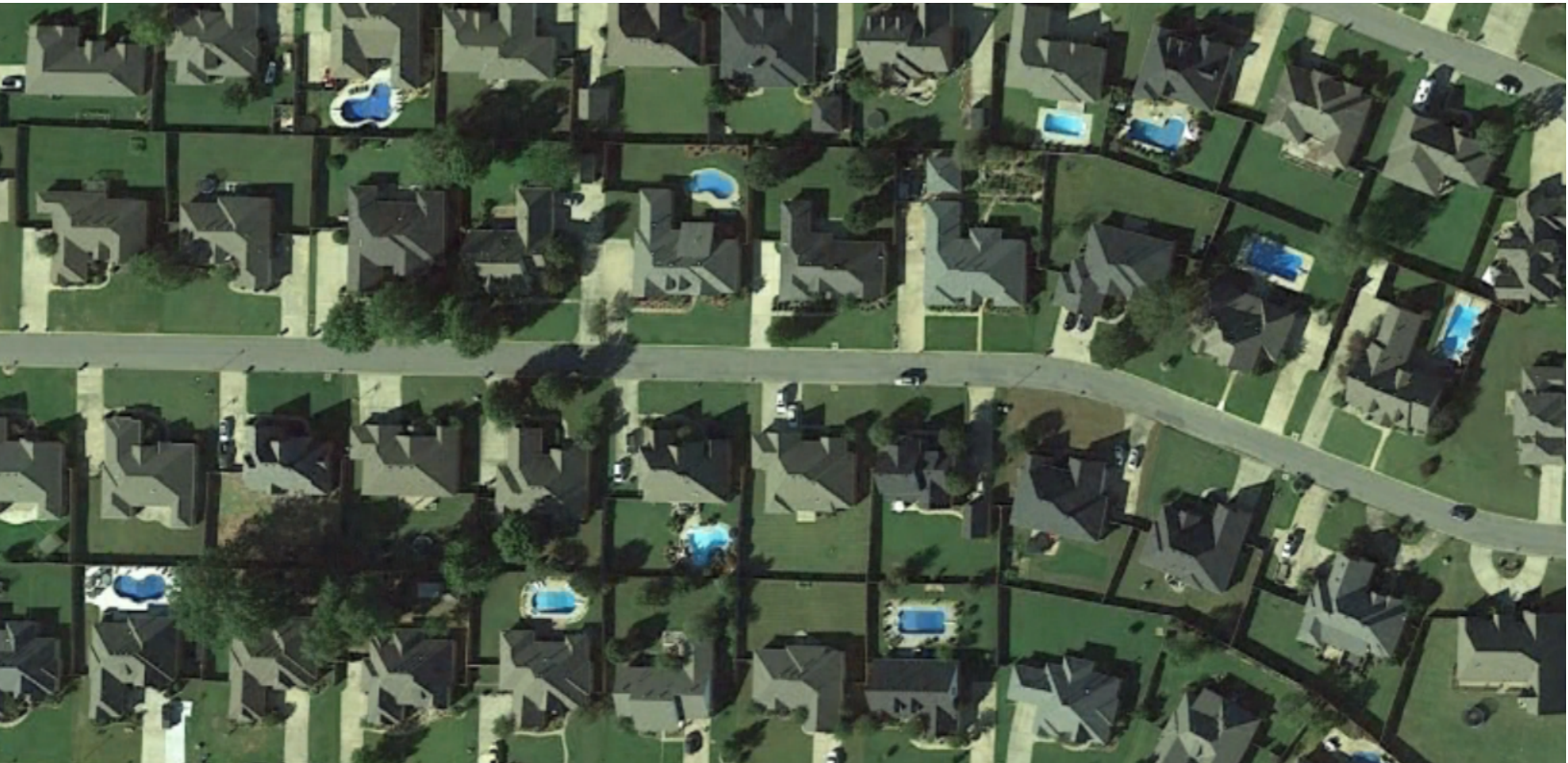


COMPLIANCE GUIDANCE

City of Conway

MS4 Storm Water Permit and Ordinance



How to drain or backwash your pool WHILE PROTECTING THE ENVIRONMENT

EVEN pool water on streets drains to creeks!

Pool owners may be tempted to discharge chlorinated or saline pool water into the street and gutter that leads to a storm drain. However, the purpose of the storm drain system is to protect against flooding and water damage by quickly removing rain water from our streets. This water gets no treatment and may ultimately drain into creeks, lakes, and rivers. The City of Conway has permits and ordinances to reduce pollutants into our storm drains and is why the disposal of chlorinated or saline swimming pool water to the storm drain systems is prohibited. Remember to dispose of unwanted pool chemicals as household hazardous waste.

Where does Conway's storm water drain to ?

The City of Conway's storm water drainage is divided into two watersheds with the west one-half of the City draining into Tucker Creek and on to the Arkansas River and the east one-half draining into Stone Dam Creek, Gold Creek, and Little Creek with each draining into Lake Conway.



How to drain or backwash your pool WHILE PROTECTING THE ENVIRONMENT

NO!



STREET OR GUTTER

- Do not discharge chlorinated or saline pool water into the street or gutter because this water drains into creeks, lakes, and rivers without being treated first.
- Remember to dispose of unwanted pool chemicals as household hazardous waste.

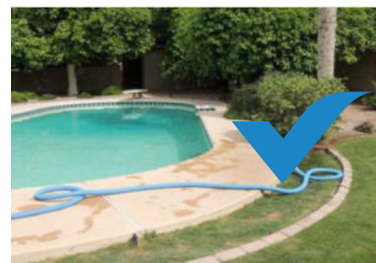
NO!



SANITARY SEWER

- **Contact the Conway Corporation WWTP for additional information**
- Never drain pool or spa to a septic system

YES!



YOUR YARD

- Drain your pool or spa water to your vegetated landscape, lawn or rocky areas on your property that allow the water to percolate into the ground
- Salt or saline pool water contains higher concentrations of salts that can be more damaging to plants and soils. Consider location of discharge as some plants are more salt-tolerant than others.
- Remember to move the drain hose frequently
- Be sure the pool water does not flow onto your neighbor's property or collect in any areas that may attract mosquitoes

Draining chlorinated pool water, or backwashing pool filters, into the street or the storm sewer system is considered an ILLCIT DISCHARGE

For the City of Conway's storm water system, we're protecting 6700 acre Lake Conway, the largest man-made Game & Fish Commission lake in the United States

**Conway City Ordinance states:
Violations that are subject to an immediate penalty
without notice of deficiency or warning include the following.....**

**g) Illicit discharges into the city's storm drainage system.
(Ordinance O-09-13, Section 8.b.2.)**

NOTES:

Where it is not possible to discharge the pool or spa water to the ground without impacting your neighbor's property, a professional pool-draining service must be hired to collect all water for off-site disposal at an approved location.



Guidelines for De-Chlorinating Swimming Pools and Discharging Filter Backwash

To de-chlorinate residential swimming pool, hot tub, spa, or fountain water:

1. Once the chlorination system has been shut off or chlorine has stopped being added to the water, keep the water in the pool/spa/fountain for 7-10 days to allow the chlorine to naturally evaporate in the sunlight.

De-chlorination additives can also be purchased at your local pool supply store and can be used to speed up the de-chlorination process.

2. Use a test kit to measure the chlorine level and pH in the water. Most pool owners use a pH and chlorine test kit to maintain the quality of the pool water, but if you do not have one, you can purchase an inexpensive one at a local pool supply store.

The water should not show any detectable levels of chlorine, and the pH should be neutral between 6.5 and 8.5. You may need to let the water sit longer to achieve the chlorine and pH levels required for discharge.

3. After water is de-chlorinated, you may discharge the water under the following conditions:

- Avoid creating conditions that cause street or property flooding or ponding water
- Avoid discharging when it is raining, in order to prevent the storm drainage system from becoming overloaded.

Remember, only DE-CHLORINATED swimming pool/hot tub/spa/fountain water is allowed to be discharged into the environment.

Thank you for your cooperation
in keeping **City's streams, creeks, and
Lake Conway** clean and healthy!

To **discharge** residential swimming pool **filter backwash**:

1. Water from backwashing pool filters **shall not** be discharged to the street or storm drainage system.

2. Backwash must be contained on the property. Use it to water grass or any area on your property that will allow water to percolate into the ground.

3. Hire a contractor to pump the pool water into a truck to be hauled offsite. Check the internet for septic disposal companies for this service.

Additional Precautions:

Pool water may contain copper from chemicals used in the pool to prevent the growth of algae. Since copper can be harmful to fish and wildlife, your local pool supply store can help you determine the best chemicals to add to the pool to neutralize or remove metals from the water before discharging.

Properly store pool and spa chemicals to prevent leaks and spills. Store them in an area that is properly covered to avoid exposure to rain or vandalism.



Questions?

Call City of Conway 501.450.6165

[www.conwayarkansas.gov/
transportation/](http://www.conwayarkansas.gov/transportation/)