



**City of Conway, Arkansas
Resolution No. R-22-43**

A RESOLUTION ACCEPTING A DONATED UTILITY EASEMENT FROM STEPHENS REAL ESTATE INVESTMENTS LLC; AND FOR OTHER PURPOSES

Whereas, in support of downtown beautification, Conway Corporation (“Conway Corp”) negotiated with Stephens Real Estate Investments LLC (“Stephens”) to acquire a utility easement to relocate aerial lines and equipment to underground and ground-mounted locations; and

Whereas, after negotiating the value of said easement at \$1,210.50, Stephens agreed to donate the same thereby reducing project costs for the citizens of Conway; and

Whereas, the terms of the utility easement and graphic description of the same are attached hereto as Exhibit A; and

Whereas, Ark. Code § 14-54-302(b) provides that the execution of all conveyances shall be performed by the mayor and city council when authorized by a resolution in writing and approved by a majority vote of the governing body of the municipality present and participating.

NOW, THEREFORE, BE IT RESOLVED BY THE CITY COUNCIL OF THE CITY OF CONWAY, ARKANSAS THAT:

Section 1. The utility easement attached as Exhibit A is hereby accepted and approved. The Mayor and City Clerk are hereby authorized to execute the same as provided by Ark. Code § 14-54-302(b).

Section 2. The Mayor and City Clerk and hereby authorized to execute to such documents as may be deemed necessary or advisable to memorialize the donation of the utility easement described herein.

Section 3. All resolutions in conflict herewith are repealed to the extent of the conflict.

PASSED this 13th day of September, 2022.

Approved:

Mayor Bart Castleberry

Attest:

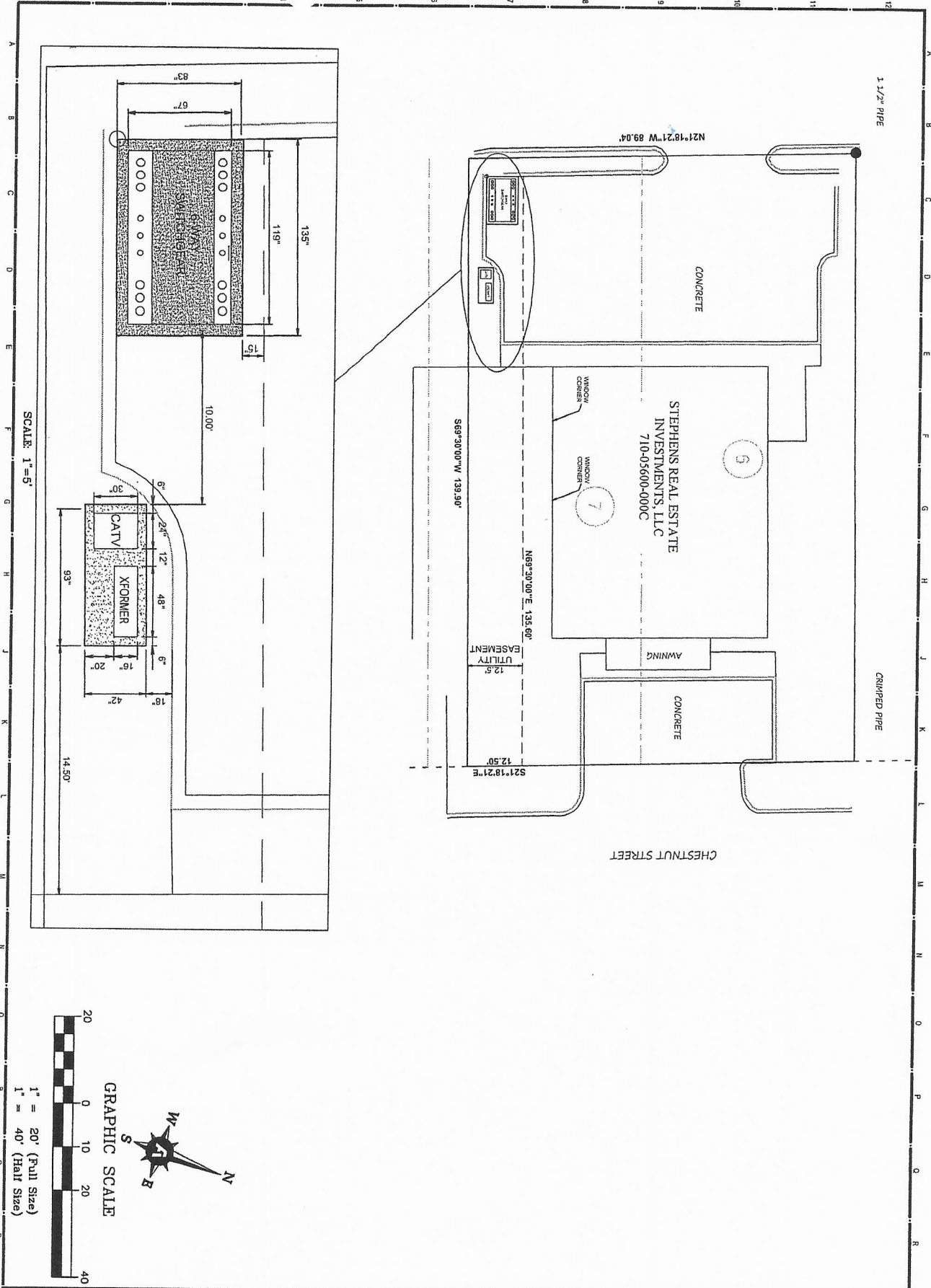
**Michael O. Garrett
City Clerk/Treasurer**

EXHIBIT A

Legal Description of Easement Property

A part of Lot 7, Block 14, Robinson's Plan to the City of Conway as shown on B. G. Wilson's Map of Conway recorded in Plat Book A, Page 46 ("Robinson's Plan"), records of Faulkner County, Arkansas being more particularly described as follows:

Commencing at a found 1½" pipe for the NW Corner of Lot 6, Block 14 of Robinson's Plan; thence along the West line of said Lot 6 and said Lot 7 S21°18'21"E a distance of 76.53 feet to the POINT OF BEGINNING; thence leaving said West line and parallel to the South line of said Lot 7 N69°30'00"E a distance of 139.90 feet to the East line of said Lot 7; said point being on the West right of way of Chestnut Street; thence along said right of way S21°18'21"E a distance of 12.5 feet; thence leaving said right of way and parallel to the South line of said Lot 7 S69°30'00"W a distance of 139.90 feet to the West line of said Lot 7; thence along said West line of said Lot 7 N21°18'21"W a distance of 12.5 feet to the POINT OF BEGINNING, containing 2,098.5 square feet, more or less. A sketch of the Easement Property is attached hereto.



SHEET 1 OF 1 A000	CHESTNUT STREET IMPROVEMENTS CHECKED BY: J.A.J. DRAWN BY: J.S.S. 7/29/2022 10:00 AM CONWAY, ARKANSAS	CONWAY CORPORATION DOWNTOWN UTILITY RELOCATION PROJECT CONWAY, ARKANSAS		FISHER ARNOLD ENGINEERS ARCHITECTS CONSULTANTS PLANNERS 9180 Crestwyn Hills Drive Memphis, Tennessee 38125-8538 901.748.1871 Fax: 901.748.3115 www.fisherarnold.com
		CONWAY CORPORATION DOWNTOWN UTILITY RELOCATION PROJECT CONWAY, ARKANSAS		