

City of
Conway

R-6498

3

16419
Doc 2000-6373
Date 04/25/2000
11:40:50 AM
Filed & Recorded in
Official Records of
Faulkner County
SHARON RIMMER
FAULKNER COUNTY CIRCUIT CLERK
Fees \$10.00

ORDINANCE NO. 0-00-09 by C&C D.C.

**AN ORDINANCE ACCEPTING THE ANNEXATION OF
CERTAIN LANDS TO THE CITY OF CONWAY, ARKANSAS;
DECLARING AN EMERGENCY;
AND FOR OTHER PURPOSES**

**NOW, BE IT ORDAINED BY THE CITY COUNCIL OF THE CITY OF CONWAY,
ARKANSAS:**

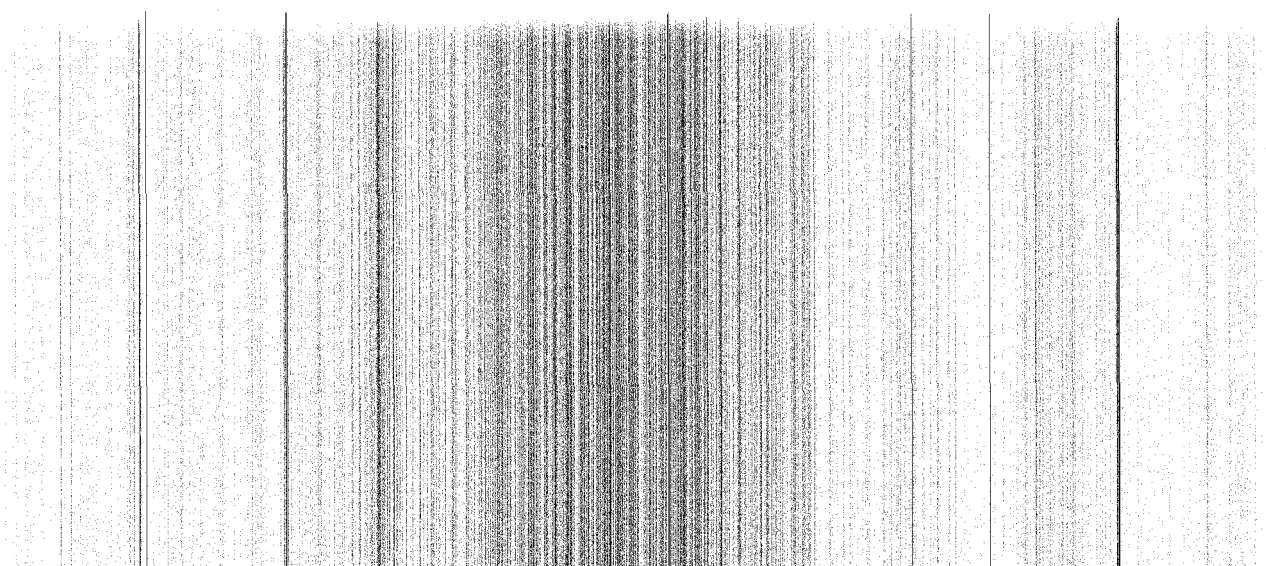
SECTION 1: The City of Conway, Arkansas, hereby accepts the hereinafter described territory, annexed to said City by order of the County Court of Faulkner County, Arkansas, heretofore entered on the 13th day of January, 2000, said territory being situated in Faulkner County, Arkansas, and described as follows:

The W 1/2 NE 1/4 and the SE 1/4 NW 1/4 of Section 6, T-5-N, R-14-W, and all that part of the N 1/2 NW 1/4, Section 6, T-5-N, R-14-W lying south of State Highway 319

and that said above described lands and territory be, and the same hereby are, declared to be a part of the City of Conway, Faulkner County, Arkansas, and shall be zoned **A-I**.

SECTION 2: From and after this date, the inhabitants residing within and upon the hereinabove described lands and territory shall have and enjoy all the rights and privileges of, and be subject to all the laws, rules, ordinances, limitations, and regulations imposed upon the inhabitants within the original limits of said City of Conway, Arkansas, and for voting purposes, said lands are hereby assigned to and designated as a part of Ward 2 of the City of Conway, Arkansas.

SECTION 3: It is hereby ascertained and declared that it is necessary for the protection and preservation of the public health and safety that the foregoing



(Ordinance O-~~00-09~~)

ordinance be passed and adopted; that an emergency exists; that this ordinance shall take effect and be in force from and after its passage and publication.

PASSED this 7 day of February, ~~1999~~ 2000

APPROVED:

Pat Jannell
MAYOR

ATTEST:

Michael O. Gussert
CITY CLERK