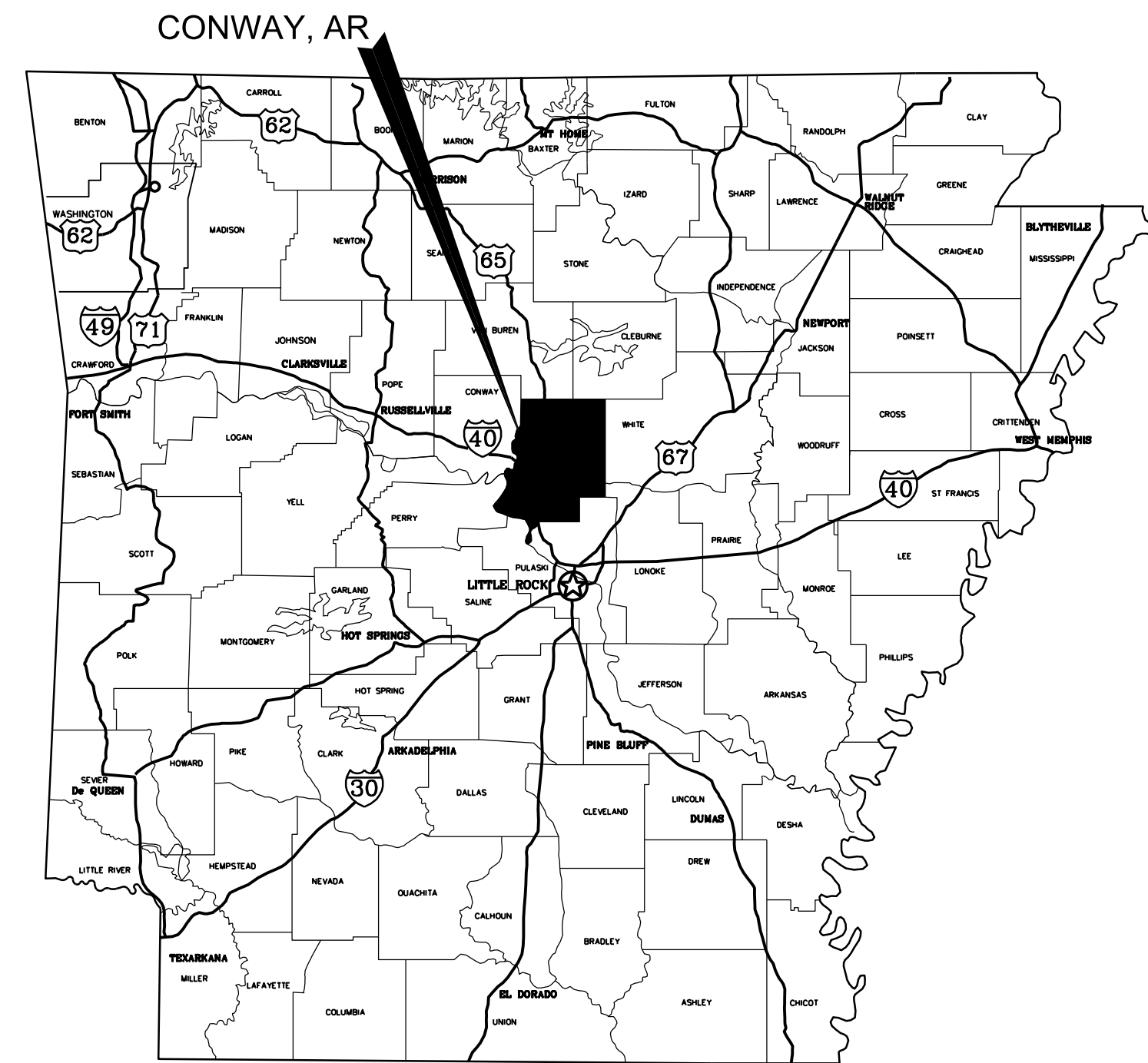
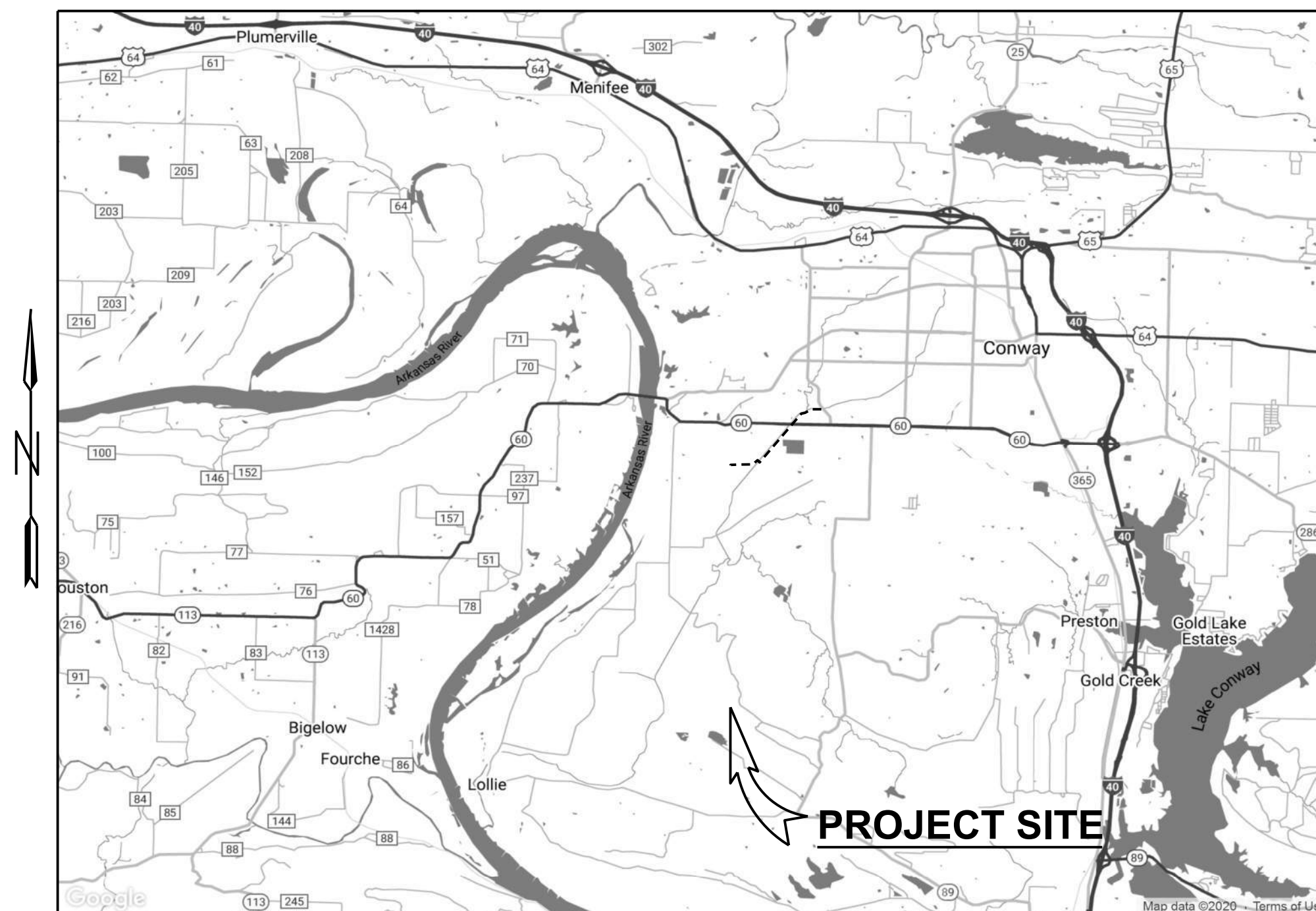


KINLEY TRAIL EXTENSION HOGAN RD. TO CENTENNIAL SOCCER PARK CITY OF CONWAY CONWAY, ARKANSAS

CITY OF CONWAY JOB 18-143



LOCATION MAP



VICINITY MAP

NO SCALE

SHEET INDEX	
SHEET NO.	TITLE
1	COVER SHEET
2	TYPICAL SECTIONS
3-10	PLAN & PROFILE

**GARVER PROJECT NO. 19T20183
MAY 2021**



831 Parkway
Suite C
Conway, AR 72034
(501) 537-3293



© 2018 GARVER, LLC
THIS DOCUMENT, ALONG WITH THE
IDEAS AND DESIGNS CONVEYED
HEREIN, SHALL BE CONSIDERED
INSTRUMENTS OF PROFESSIONAL
SERVICE AND ARE PROPERTY OF
GARVER, LLC. ANY USE,
REPRODUCTION, OR DISTRIBUTION
OF THIS DOCUMENT, ALONG WITH
THE IDEAS AND DESIGN CONTAINED
HEREIN, IS PROHIBITED UNLESS
AUTHORIZED IN WRITING BY
GARVER, LLC OR EXPLICITLY
ALLOWED IN THE GOVERNING
PROFESSIONAL SERVICES
AGREEMENT FOR THIS WORK.

CONCEPTUAL PLANS
NOT FOR CONSTRUCTION

REV.	DATE	DESCRIPTION	BY



CITY OF CONWAY
CONWAY, ARKANSAS

KINLEY TRAIL EXTENSION
(HOGAN RD. TO CENTENNIAL
SOCCER PARK)

COVER SHEET

JOB NO.: 19T20183
DATE: MAY 2021
DESIGNED BY: DLT
DRAWN BY: HJB

BAR IS ONE INCH ON
ORIGINAL DRAWING
IF NOT ONE INCH ON THIS SHEET,
ADJUST SCALES ACCORDINGLY.

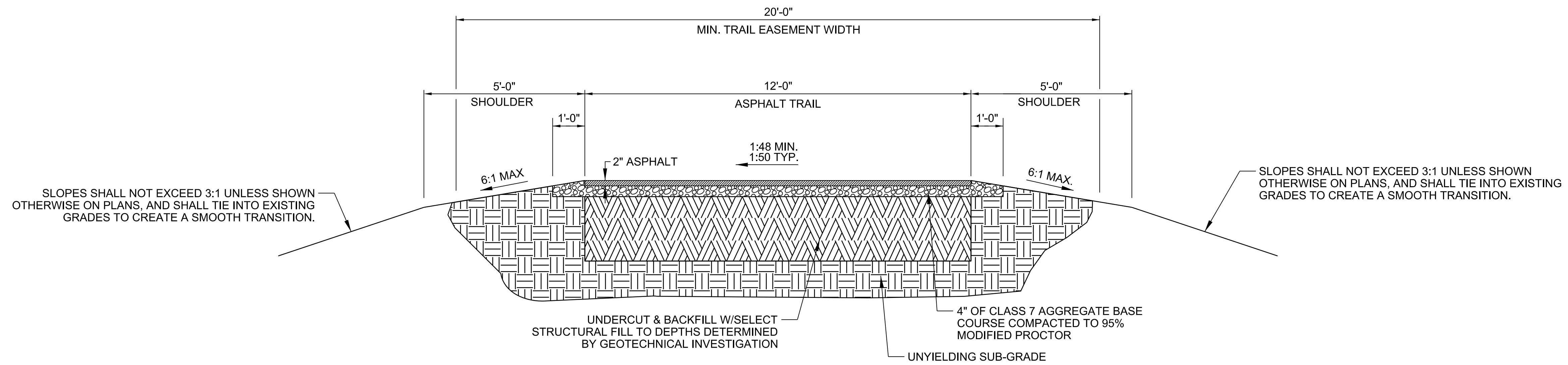
DRAWING NUMBER
G-001

SHEET
NUMBER 1



© 2018 GARVER, LLC
 THIS DOCUMENT, ALONG WITH THE IDEAS AND DESIGNS CONVEYED HEREIN, SHALL BE CONSIDERED INSTRUMENTS OF PROFESSIONAL SERVICE AND ARE PROPERTY OF GARVER, LLC. ANY USE, REPRODUCTION, OR DISTRIBUTION OF THIS DOCUMENT, ALONG WITH THE IDEAS AND DESIGN CONTAINED HEREIN, IS PROHIBITED UNLESS AUTHORIZED IN WRITING BY GARVER, LLC OR EXPLICITLY ALLOWED IN THE GOVERNING PROFESSIONAL SERVICES AGREEMENT FOR THIS WORK.

CONCEPTUAL PLANS
 NOT FOR CONSTRUCTION



TYPICAL SECTION ①
 ASPHALT TRAIL SECTION

NOTES:

1. ALL WORK SHALL COMPLY WITH SECTIONS 303 & 407 OF THE ARKANSAS HIGHWAY AND TRANSPORTATION DEPARTMENT STANDARD SPECIFICATIONS.
2. ASPHALT FOR TRAILS SHALL BE MINIMUM 2" THICK OF 70-22 SURFACE COURSE MIX.
3. TRAILS SHALL BE APPROVED BY THE CITY ENGINEER PRIOR TO ACCEPTANCE.

REV.	DATE	DESCRIPTION	BY



CITY OF CONWAY
 CONWAY, ARKANSAS

KINLEY TRAIL EXTENSION
 (HOGAN RD. TO CENTENNIAL SOCCER PARK)

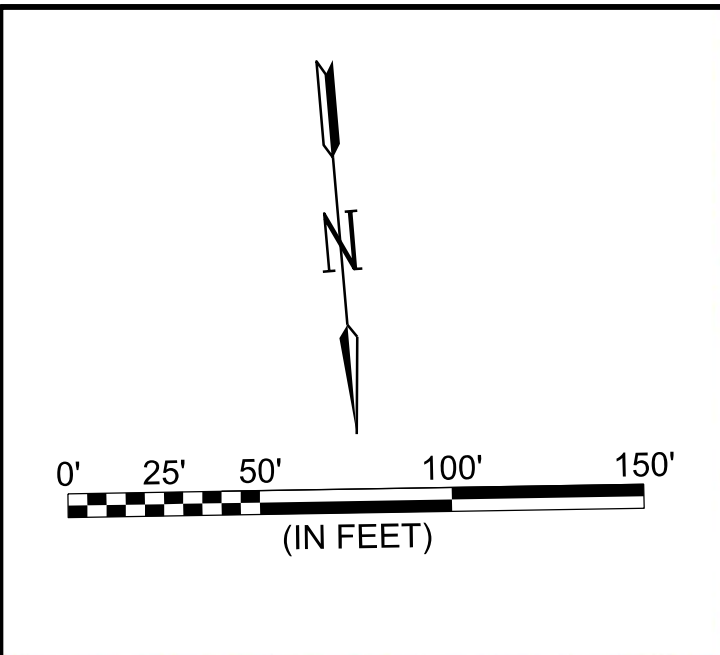
TYPICAL SECTIONS

JOB NO.: 19T20183
 DATE: MAY 2021
 DESIGNED BY: MJM
 DRAWN BY: MJM

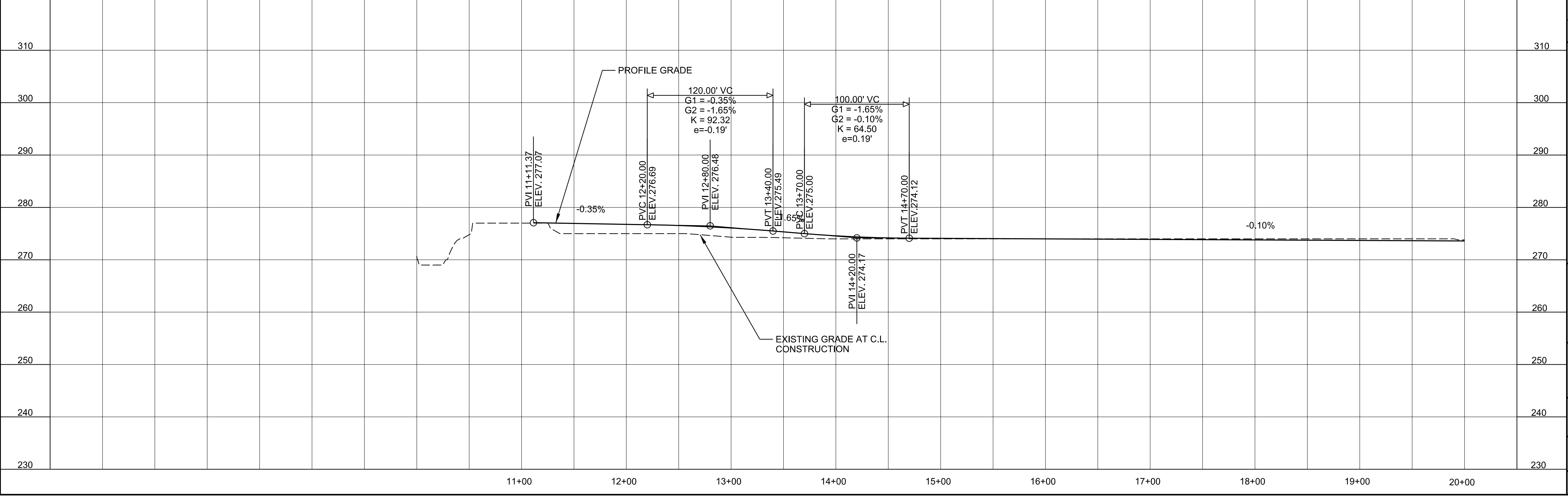
BAR IS ONE INCH ON ORIGINAL DRAWING
 IF NOT ONE INCH ON THIS SHEET, ADJUST SCALES ACCORDINGLY.

DRAWING NUMBER
C-101

SHEET NUMBER
 2



MATCH LINE STA. 20+00



GARVER
 © 2018 GARVER, LLC
 THIS DOCUMENT, ALONG WITH THE IDEAS AND DESIGNS CONVEYED HEREIN, SHALL BE CONSIDERED INSTRUMENTS OF PROFESSIONAL SERVICE AND ARE PROPERTY OF GARVER, LLC. ANY USE, REPRODUCTION, OR DISTRIBUTION OF THIS DOCUMENT, ALONG WITH THE IDEAS AND DESIGN CONTAINED HEREIN, IS PROHIBITED UNLESS AUTHORIZED IN WRITING BY GARVER, LLC OR EXPLICITLY ALLOWED IN THE GOVERNING PROFESSIONAL SERVICES AGREEMENT FOR THIS WORK.

CONCEPTUAL PLANS
 NOT FOR CONSTRUCTION

REV.	DATE	DESCRIPTION	BY


 CITY OF CONWAY
 CONWAY, ARKANSAS
 KINLEY TRAIL EXTENSION
 (HOGAN RD. TO CENTENNIAL SOCCER PARK)

PLAN AND PROFILE -
 KINLEY TRAIL
 EXTENSION
 SHEET (1 OF 8)

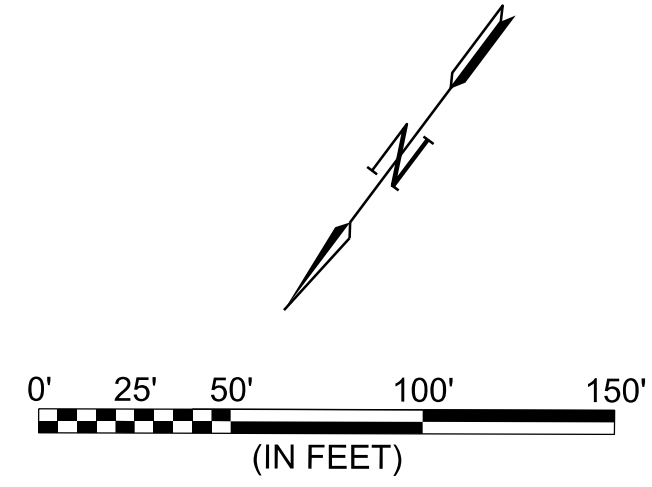
JOB NO.: 19T20183
 DATE: MAY 2021
 DESIGNED BY: DLT
 DRAWN BY: HJB

BAR IS ONE INCH ON ORIGINAL DRAWING
 IF NOT ONE INCH ON THIS SHEET, ADJUST SCALES ACCORDINGLY.

DRAWING NUMBER
C-201
 SHEET NUMBER
3

5/28/2021 10:05:24 AM
 H:\Beck\WORKSPACE\Garver_2012\1201919120183 - Conway - Tucker Creek Trail\Drawings\CTCT-C201-PP.dgn

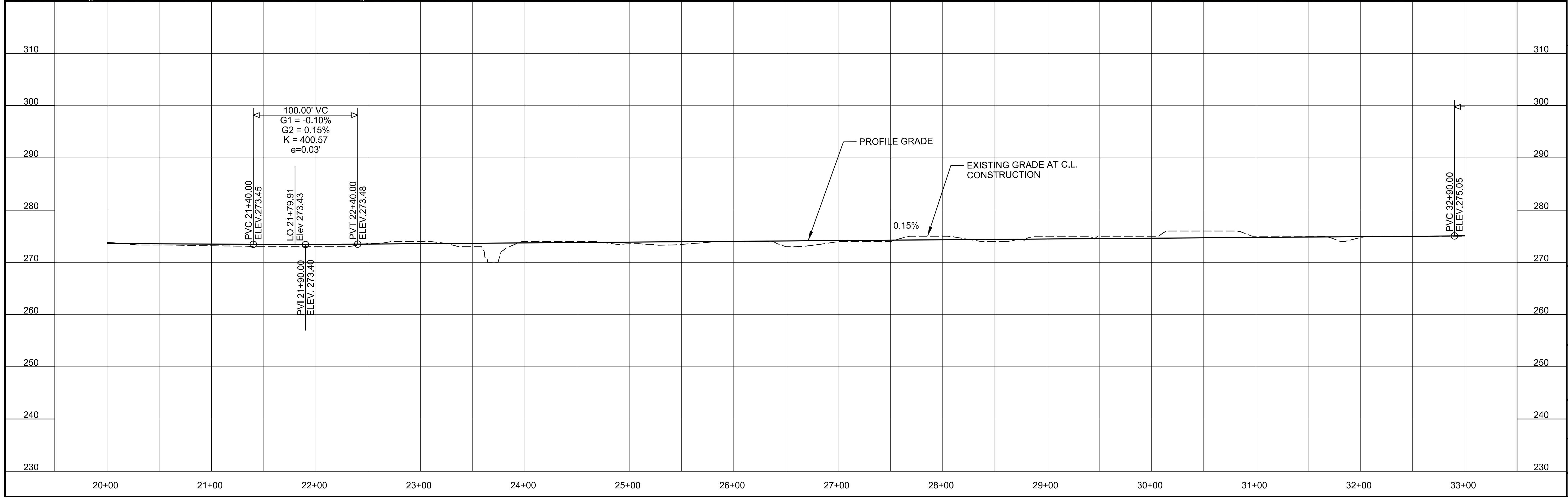
H:\Beck 5/28/2021 10:05:57 AM
 WORKSPACE\Garver_2012
 L:\2019\19120183 - Conway - Tucker Creek Trail\Drawings\CTCT-C202-PP.dgn



GARVER
 © 2018 GARVER, LLC
 THIS DOCUMENT, ALONG WITH THE IDEAS AND DESIGNS CONVEYED HEREIN, SHALL BE CONSIDERED INSTRUMENTS OF PROFESSIONAL SERVICE AND ARE PROPERTY OF GARVER, LLC. ANY USE, REPRODUCTION, OR DISTRIBUTION OF THIS DOCUMENT, ALONG WITH THE IDEAS AND DESIGN CONTAINED HEREIN, IS PROHIBITED UNLESS AUTHORIZED IN WRITING BY GARVER, LLC OR EXPLICITLY ALLOWED IN THE GOVERNING PROFESSIONAL SERVICES AGREEMENT FOR THIS WORK.

**CONCEPTUAL PLANS
 NOT FOR CONSTRUCTION**

REV.	DATE	DESCRIPTION	BY



CITY OF CONWAY
 CONWAY, ARKANSAS

**KINLEY TRAIL EXTENSION
 (HOGAN RD. TO CENTENNIAL
 SOCCER PARK)**

PLAN AND PROFILE -
 KINLEY TRAIL
 EXTENSION
 SHEET (2 OF 8)

JOB NO.: 19T20183
 DATE: MAY 2021
 DESIGNED BY: DLT
 DRAWN BY: HJB

BAR IS ONE INCH ON ORIGINAL DRAWING
 IF NOT ONE INCH ON THIS SHEET, ADJUST SCALES ACCORDINGLY.

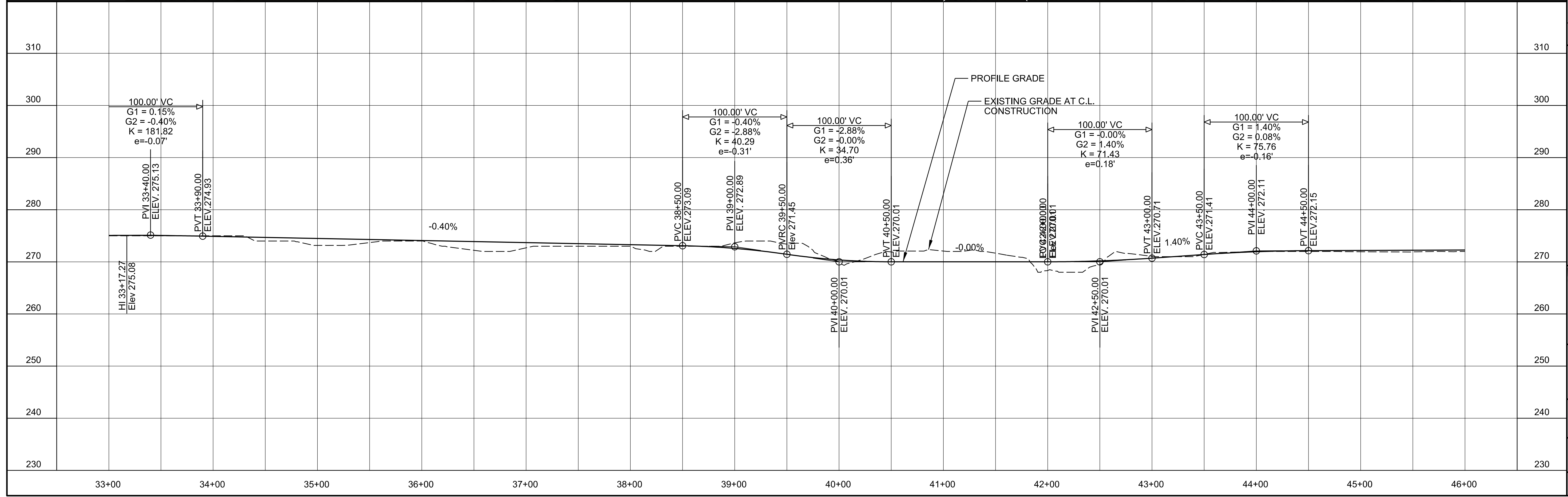
DRAWING NUMBER
C-202


SHEET NUMBER
4

5/28/2021 10:06:39 AM
 WORKSPACE:Garver_2012
 L:\2019\19120183 - Conway - Tucker Creek Trail\Drawings\CTCT-C203-PP.dgn



MATCH LINE STA. 46+00






© 2018 GARVER, LLC
 THIS DOCUMENT, ALONG WITH THE IDEAS AND DESIGNS CONVEYED HEREIN, SHALL BE CONSIDERED INSTRUMENTS OF PROFESSIONAL SERVICE AND ARE PROPERTY OF GARVER, LLC. ANY USE, REPRODUCTION, OR DISTRIBUTION OF THIS DOCUMENT, ALONG WITH THE IDEAS AND DESIGN CONTAINED HEREIN, IS PROHIBITED UNLESS AUTHORIZED IN WRITING BY GARVER, LLC OR EXPLICITLY ALLOWED IN THE GOVERNING PROFESSIONAL SERVICES AGREEMENT FOR THIS WORK.

**CONCEPTUAL PLANS
 NOT FOR CONSTRUCTION**

REV.	DATE	DESCRIPTION	BY



CITY OF CONWAY
 CONWAY, ARKANSAS

**KINLEY TRAIL EXTENSION
 (HOGAN RD. TO CENTENNIAL SOCCER PARK)**

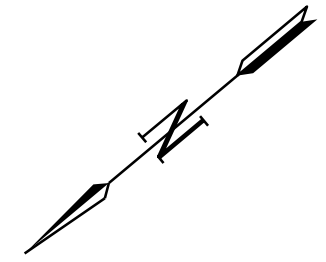
**PLAN AND PROFILE -
 KINLEY TRAIL
 EXTENSION
 SHEET (3 OF 8)**

JOB NO.: 19T20183
 DATE: MAY 2021
 DESIGNED BY: DLT
 DRAWN BY: HJB

BAR IS ONE INCH ON ORIGINAL DRAWING
 IF NOT ONE INCH ON THIS SHEET, ADJUST SCALES ACCORDINGLY.

**DRAWING NUMBER
 C-203**


**SHEET NUMBER
 5**



© 2018 GARVER, LLC
 THIS DOCUMENT, ALONG WITH THE IDEAS AND DESIGNS CONVEYED HEREIN, SHALL BE CONSIDERED INSTRUMENTS OF PROFESSIONAL SERVICE AND ARE PROPERTY OF GARVER, LLC. ANY USE, REPRODUCTION, OR DISTRIBUTION OF THIS DOCUMENT, ALONG WITH THE IDEAS AND DESIGN CONTAINED HEREIN, IS PROHIBITED UNLESS AUTHORIZED IN WRITING BY GARVER, LLC OR EXPLICITLY ALLOWED IN THE GOVERNING PROFESSIONAL SERVICES AGREEMENT FOR THIS WORK.

**CONCEPTUAL PLANS
 NOT FOR CONSTRUCTION**

REV.	DATE	DESCRIPTION	BY



CITY OF CONWAY
 CONWAY, ARKANSAS

**KINLEY TRAIL EXTENSION
 (HOGAN RD. TO CENTENNIAL SOCCER PARK)**

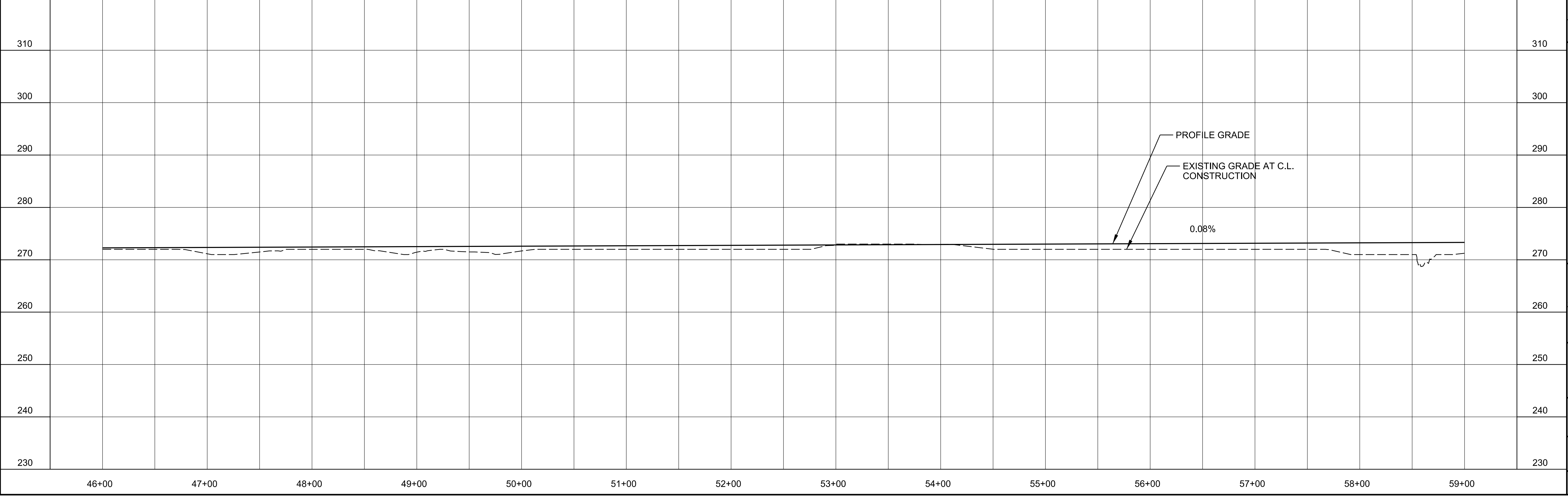
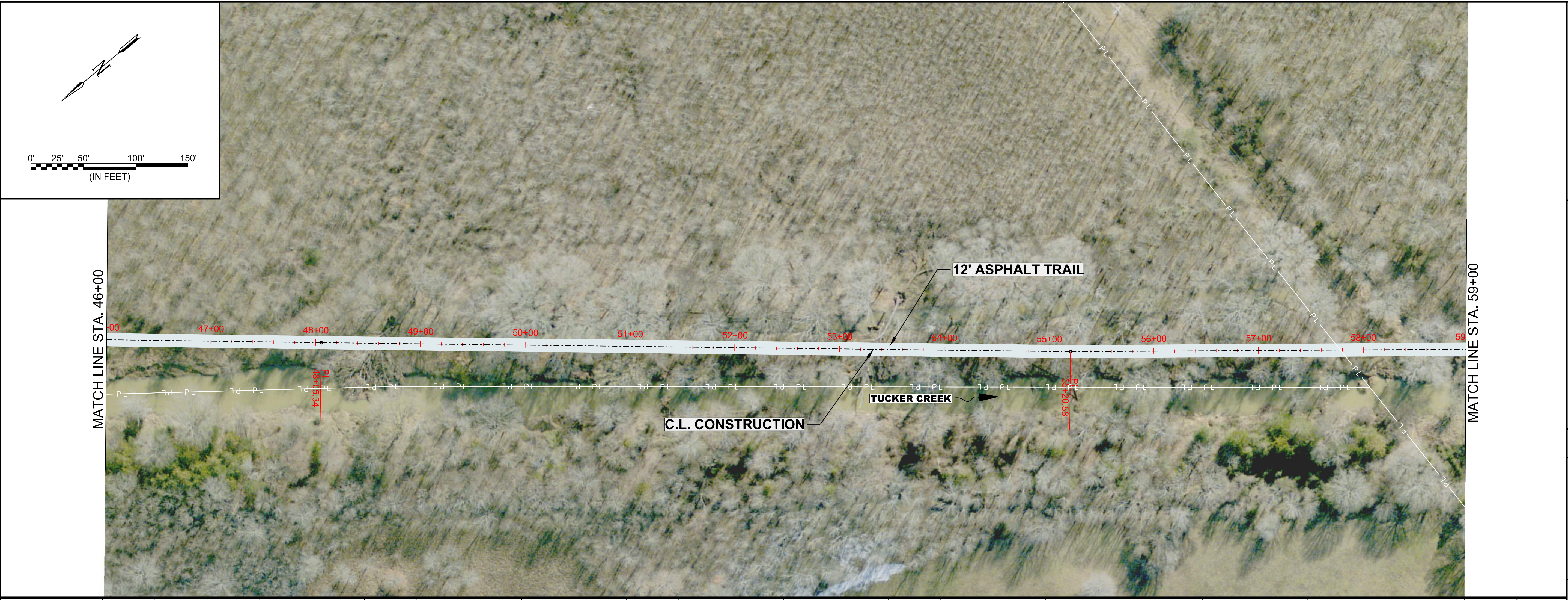
PLAN AND PROFILE -
 KINLEY TRAIL
 EXTENSION
 SHEET (4 OF 8)

JOB NO.: 19T20183
 DATE: MAY 2021
 DESIGNED BY: DLT
 DRAWN BY: HJB

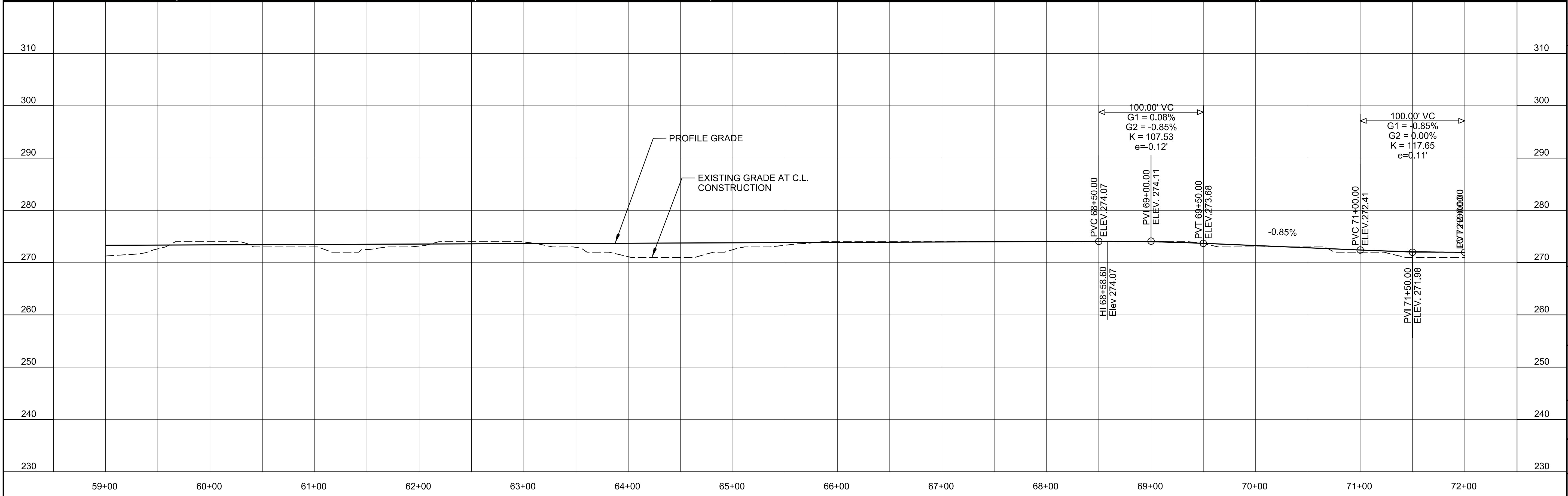
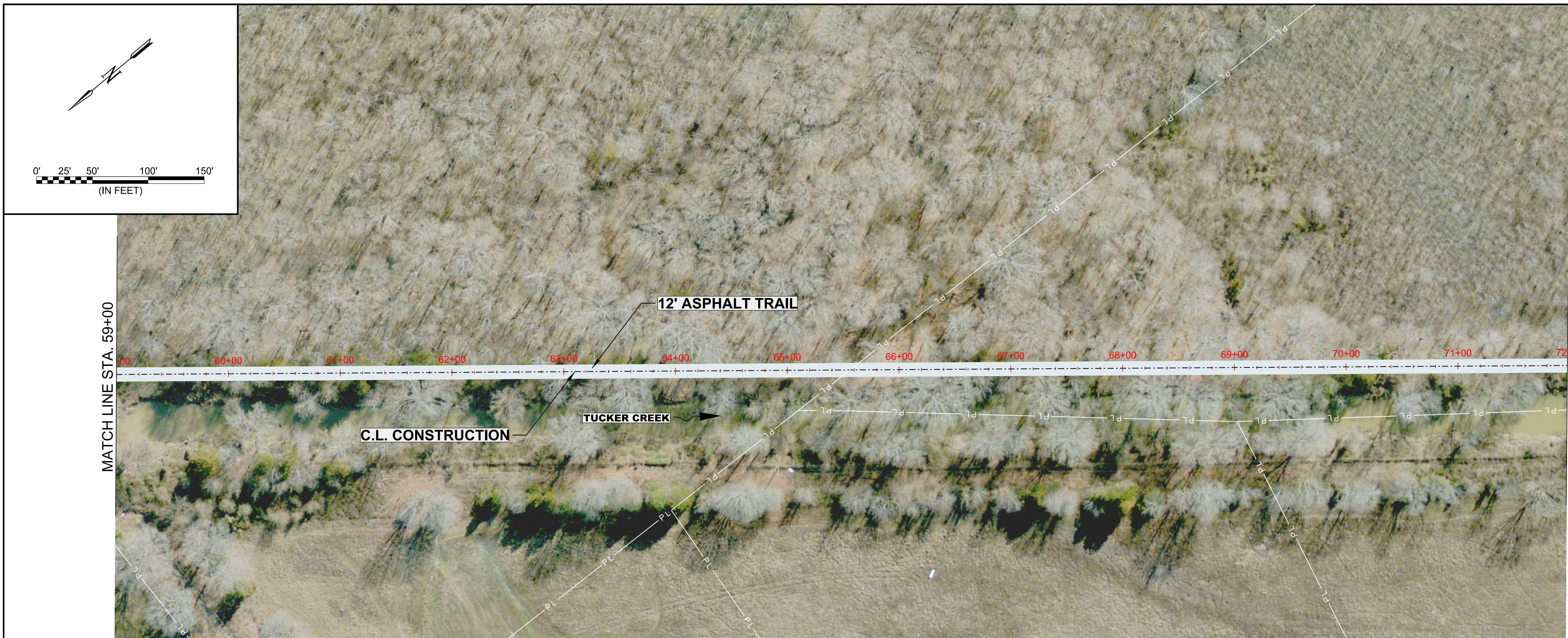
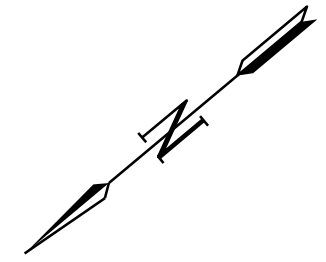
BAR IS ONE INCH ON ORIGINAL DRAWING
 IF NOT ONE INCH ON THIS SHEET, ADJUST SCALES ACCORDINGLY.


DRAWING NUMBER
C-204

SHEET NUMBER
6



5/28/2021 10:07:16 AM
 H:\Beck\WORKSPACE\Garver_2012\120183\19T20183 - Conway - Tucker Creek Trail\Drawings\CTCT-C204-PP.dgn






© 2018 GARVER, LLC
THIS DOCUMENT, ALONG WITH THE IDEAS AND DESIGNS CONVEYED HEREIN, SHALL BE CONSIDERED INSTRUMENTS OF PROFESSIONAL SERVICE AND ARE PROPERTY OF GARVER, LLC. ANY USE, REPRODUCTION, OR DISTRIBUTION OF THIS DOCUMENT, ALONG WITH THE IDEAS AND DESIGN CONTAINED HEREIN, IS PROHIBITED UNLESS AUTHORIZED IN WRITING BY GARVER, LLC OR EXPLICITLY ALLOWED IN THE GOVERNING PROFESSIONAL SERVICES AGREEMENT FOR THIS WORK.

**CONCEPTUAL PLANS
NOT FOR CONSTRUCTION**

REV.	DATE	DESCRIPTION	BY



CITY OF CONWAY
CONWAY, ARKANSAS

**KINLEY TRAIL EXTENSION
(HOGAN RD. TO CENTENNIAL SOCCER PARK)**

**PLAN AND PROFILE -
KINLEY TRAIL
EXTENSION
SHEET (5 OF 8)**

JOB NO.: 19T20183
DATE: MAY 2021
DESIGNED BY: DLT
DRAWN BY: HJB

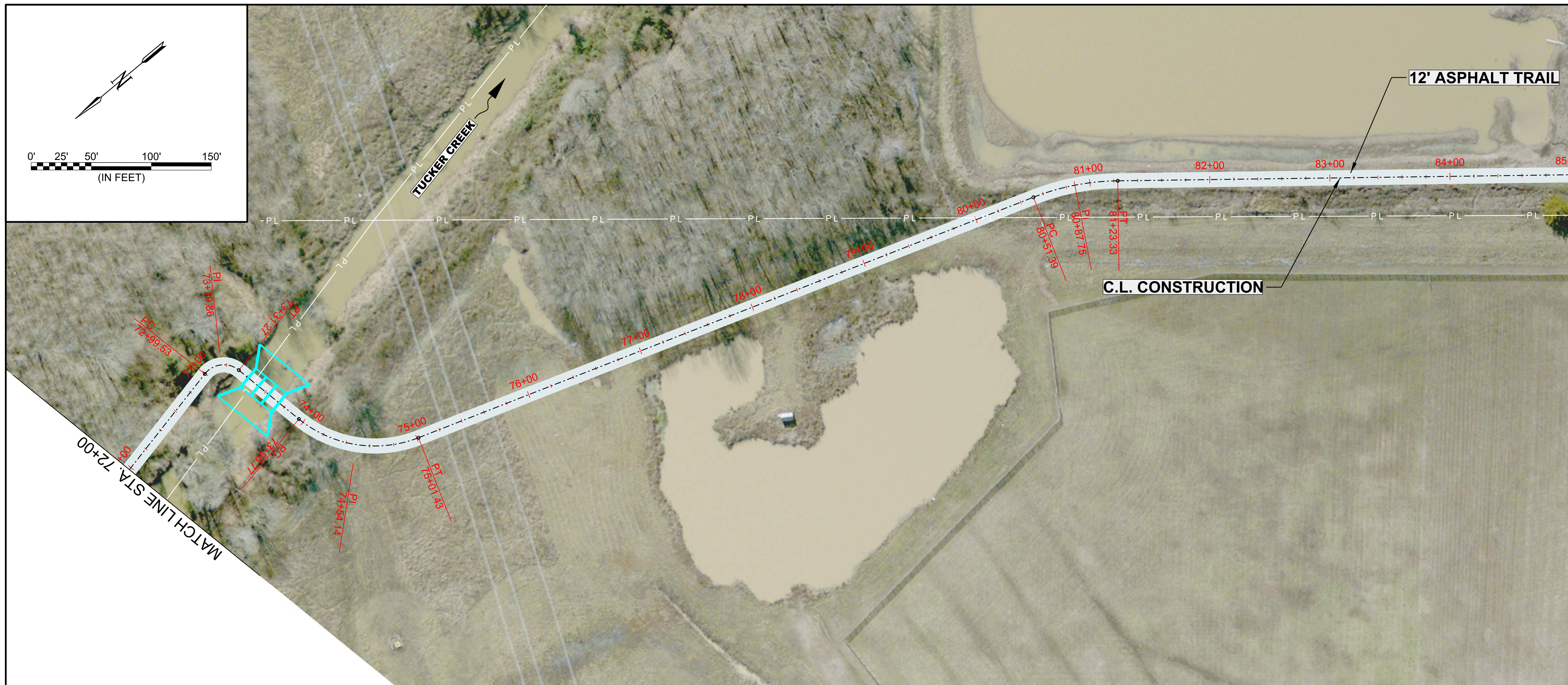
BAR IS ONE INCH ON ORIGINAL DRAWING
IF NOT ONE INCH ON THIS SHEET, ADJUST SCALES ACCORDINGLY.

**DRAWING NUMBER
C-205**

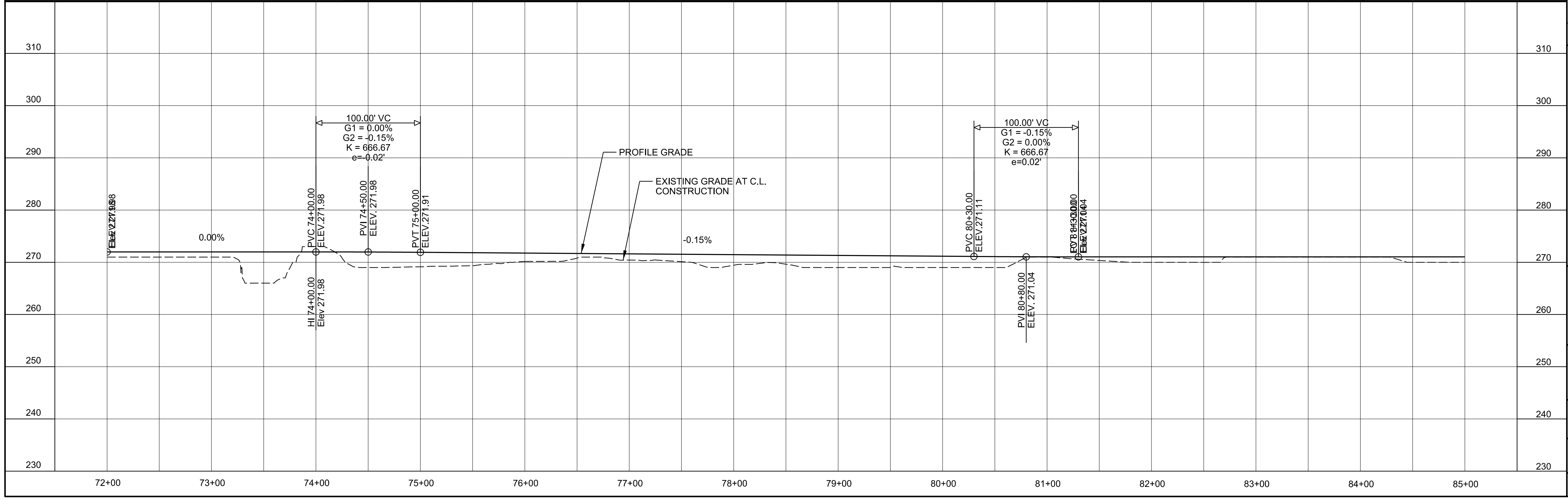
**SHEET NUMBER
7**


5/28/2021 10:07:52 AM
WORKSPACE:Garver_2012
L:\2019\19T20183 - Conway - Tucker Creek Trail\Drawings\CTCT-C205-PP.dgn

5/28/2021 10:06:25 AM
 WORKSPACE:Garver_2012
 L:\2019\19120183 - Conway - Tucker Creek Trail\Drawings\CTCT-C206-PP.dgn



MATCH LINE STA. 85+00






© 2018 GARVER, LLC
 THIS DOCUMENT, ALONG WITH THE IDEAS AND DESIGNS CONVEYED HEREIN, SHALL BE CONSIDERED INSTRUMENTS OF PROFESSIONAL SERVICE AND ARE PROPERTY OF GARVER, LLC. ANY USE, REPRODUCTION, OR DISTRIBUTION OF THIS DOCUMENT, ALONG WITH THE IDEAS AND DESIGN CONTAINED HEREIN, IS PROHIBITED UNLESS AUTHORIZED IN WRITING BY GARVER, LLC OR EXPLICITLY ALLOWED IN THE GOVERNING PROFESSIONAL SERVICES AGREEMENT FOR THIS WORK.

**CONCEPTUAL PLANS
 NOT FOR CONSTRUCTION**

REV.	DATE	DESCRIPTION	BY



**CITY OF CONWAY
 CONWAY, ARKANSAS**

**KINLEY TRAIL EXTENSION
 (HOGAN RD. TO CENTENNIAL SOCCER PARK)**

**PLAN AND PROFILE -
 KINLEY TRAIL
 EXTENSION
 SHEET (6 OF 8)**

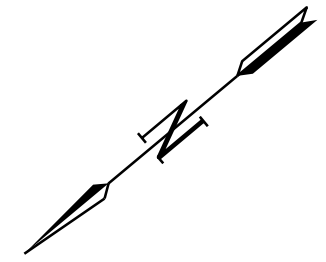
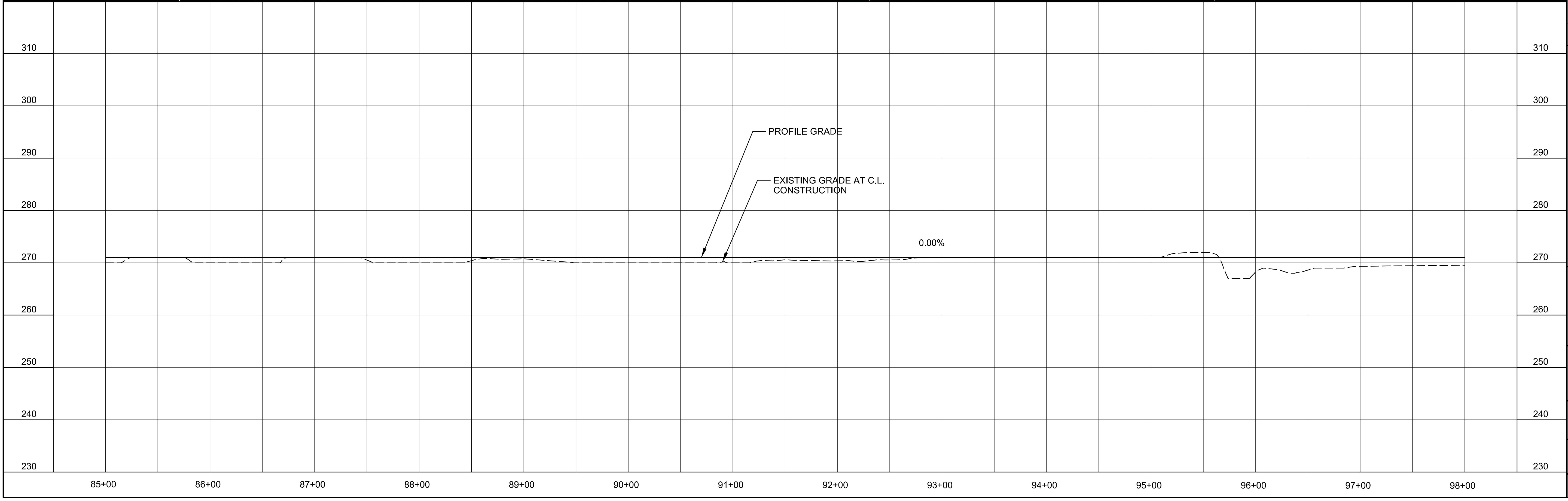
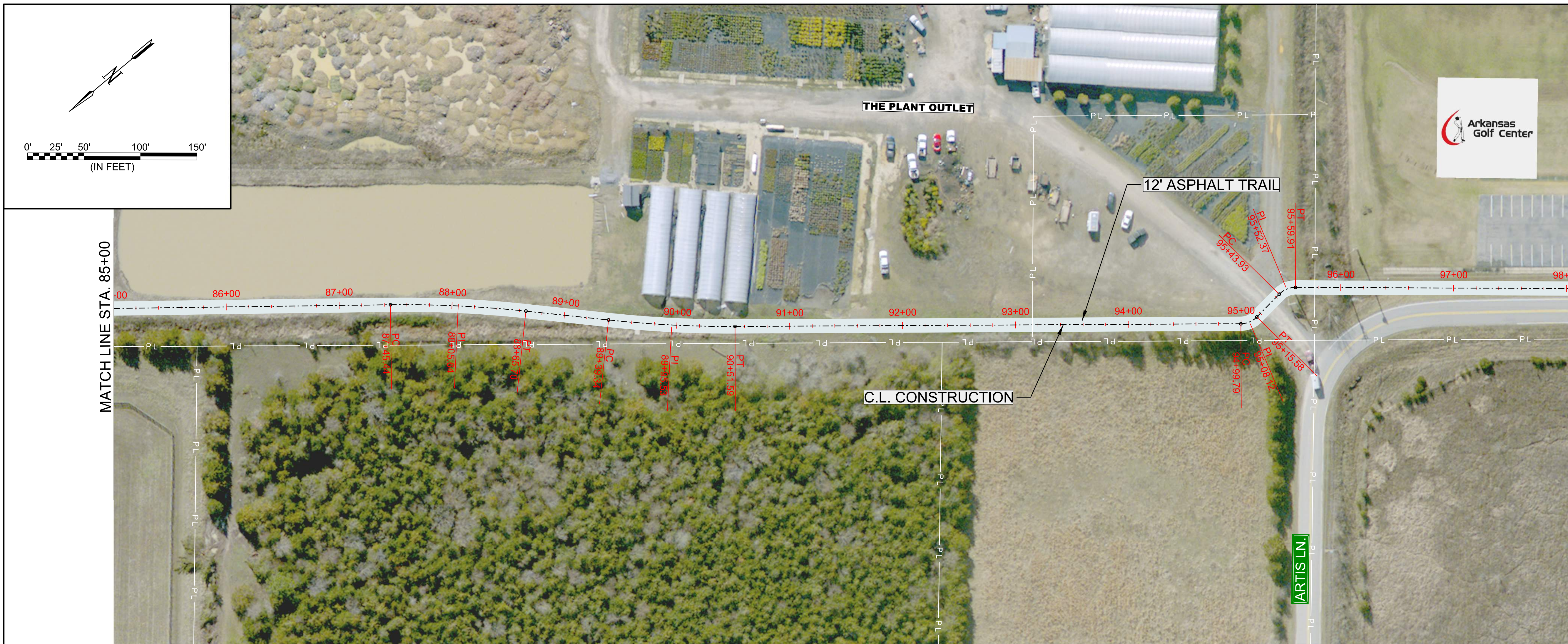
JOB NO.: 19T20183
 DATE: MAY 2021
 DESIGNED BY: DLT
 DRAWN BY: HJB

BAR IS ONE INCH ON ORIGINAL DRAWING
 IF NOT ONE INCH ON THIS SHEET, ADJUST SCALES ACCORDINGLY.

**DRAWING NUMBER
 C-206**

**SHEET NUMBER
 8**

5/28/2021 10:09:41 AM
 WORKSPACE:Garver_2012
 L:\2019\19120183 - Conway - Tucker Creek Trail\Drawings\CTCT-C207-PP.dgn



MATCH LINE STA. 85+00

MATCH LINE STA. 98+00

© 2018 GARVER, LLC
 THIS DOCUMENT, ALONG WITH THE IDEAS AND DESIGNS CONVEYED HEREIN, SHALL BE CONSIDERED INSTRUMENTS OF PROFESSIONAL SERVICE AND ARE PROPERTY OF GARVER, LLC. ANY USE, REPRODUCTION, OR DISTRIBUTION OF THIS DOCUMENT, ALONG WITH THE IDEAS AND DESIGN CONTAINED HEREIN, IS PROHIBITED UNLESS AUTHORIZED IN WRITING BY GARVER, LLC OR EXPLICITLY ALLOWED IN THE GOVERNING PROFESSIONAL SERVICES AGREEMENT FOR THIS WORK.



CONCEPTUAL PLANS
 NOT FOR CONSTRUCTION

REV.	DATE	DESCRIPTION	BY

CITY OF CONWAY
 CONWAY, ARKANSAS

KINLEY TRAIL EXTENSION
 (HOGAN RD. TO CENTENNIAL SOCCER PARK)

PLAN AND PROFILE -
 KINLEY TRAIL
 EXTENSION
 SHEET (7 OF 8)

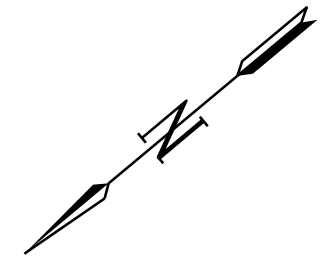
JOB NO.: 19T20183
 DATE: MAY 2021
 DESIGNED BY: DLT
 DRAWN BY: HJB

BAR IS ONE INCH ON ORIGINAL DRAWING
 IF NOT ONE INCH ON THIS SHEET, ADJUST SCALES ACCORDINGLY.

DRAWING NUMBER
C-207

SHEET NUMBER
9

5/28/2021 10:11:21 AM
 WORKSPACE:Garver_2012
 L:\2019\19120183 - Conway - Tucker Creek Trail\Drawings\CTCT-C208-PP.dgn



© 2018 GARVER, LLC
 THIS DOCUMENT, ALONG WITH THE
 IDEAS AND DESIGNS CONVEYED
 HEREIN, SHALL BE CONSIDERED
 INSTRUMENTS OF PROFESSIONAL
 SERVICE AND ARE PROPERTY OF
 GARVER, LLC. ANY USE,
 REPRODUCTION, OR DISTRIBUTION
 OF THIS DOCUMENT, ALONG WITH
 THE IDEAS AND DESIGN CONTAINED
 HEREIN, IS PROHIBITED UNLESS
 AUTHORIZED IN WRITING BY
 GARVER, LLC OR EXPLICITLY
 ALLOWED IN THE GOVERNING
 PROFESSIONAL SERVICES
 AGREEMENT FOR THIS WORK.

CONCEPTUAL PLANS
 NOT FOR CONSTRUCTION

REV.	DATE	DESCRIPTION	BY



CITY OF CONWAY
 CONWAY, ARKANSAS
 KINLEY TRAIL EXTENSION
 (HOGAN RD. TO CENTENNIAL
 SOCCER PARK)

PLAN AND PROFILE -
 KINLEY TRAIL
 EXTENSION
 SHEET (8 OF 8)

JOB NO.: 19T20183
 DATE: MAY 2021
 DESIGNED BY: DLT
 DRAWN BY: HJB

BAR IS ONE INCH ON
 ORIGINAL DRAWING
 IF NOT ONE INCH ON THIS SHEET,
 ADJUST SCALES ACCORDINGLY.

DRAWING NUMBER
C-208

SHEET NUMBER
10

