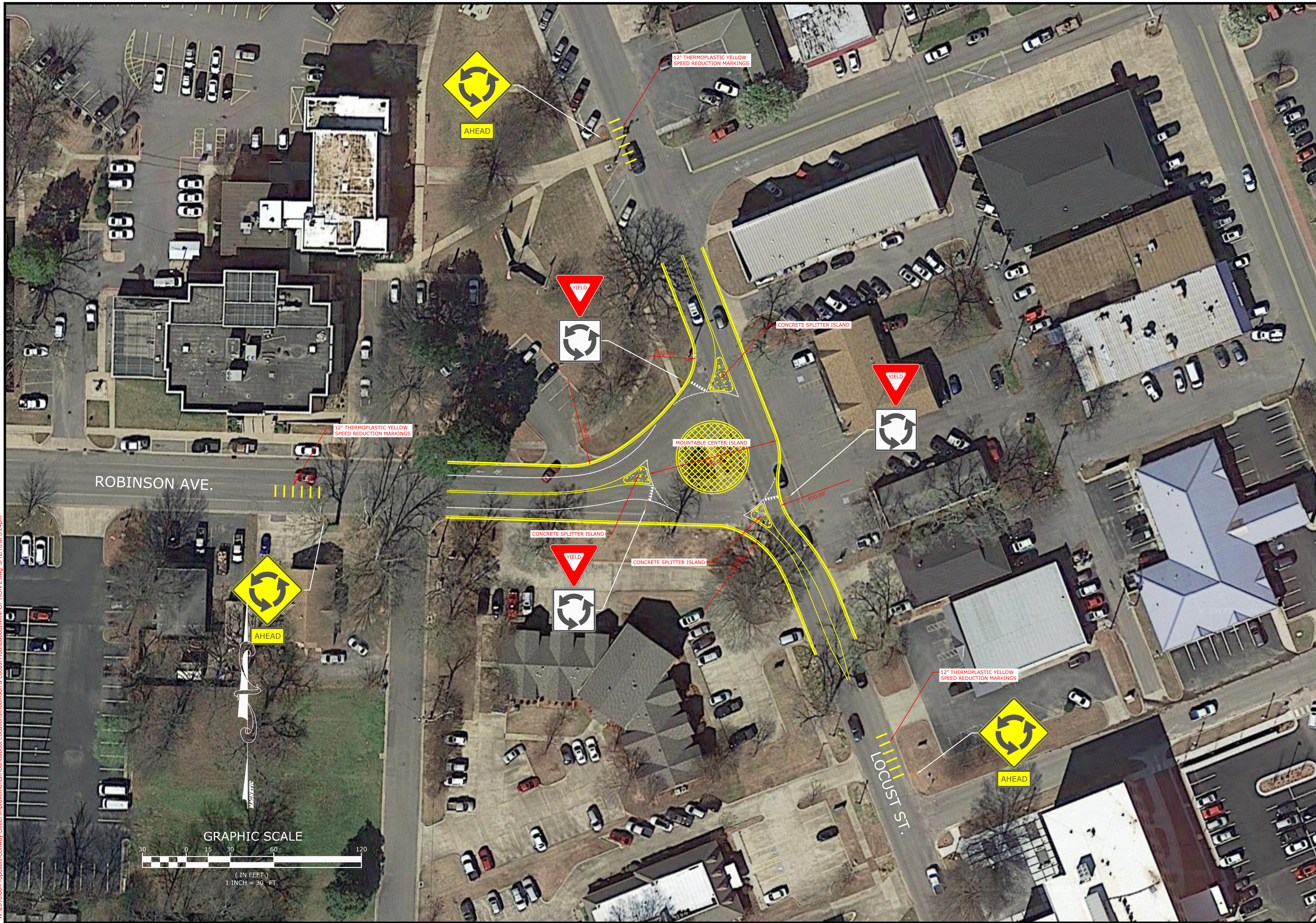


W:\2018\00-Proposals\Conway, Street Improvements\Roundabout Locations\Robinson & Locust Roundabout\MINI OPTICON 2.dwg, 3/12/18, at 5:24pm



MCC McCLELLAND CONSULTING ENGINEERS, INC.
 DESIGNED TO SERVE
 1810 N. College, Fayetteville, AR 72702, P# 479-44-2377
 4606 S. Gambel Rd. Ste. 401, Tulsa, OK 74146, P# 918-619-8803
<http://www.mcc.us.com>

ORIGINAL SIGNATURE ON FILE

ROBINSON AVE. AND LOCUST ST.
 ROUNDABOUT
 CONWAY STREET IMPROVEMENTS
 CONWAY, ARKANSAS

One Call
811
 Know what's below.
 Call before you dig.

NO.	DATE	REVISIONS	DESCRIPTION

MINI ROUNDABOUT

PROJECT ENGR: RB
 DRAWN BY: JAM
 DATE: DEC 2017
 SCALE: 1"=30'
 JOB NUMBER: LR17-57XX