



Contact: Austin Horn  
Office: 844.450.5005  
Mobile: 678.707.2626

## SIDEWALK TRIP HAZARD REPAIR SUMMARY:

### Curb Repair and Hogan West Side



City of  
**Conway** Arkansas  
*City of Colleges*



Presented to: Finley Vinson  
November 2017

The information in this summary is confidential, and is to be used only by the intended recipient and Precision Safe Sidewalks in evaluating the project. Any copying or unauthorized disclosure of this information is prohibited.



## COMMITMENT SUMMARY

### COST SAVINGS

We'll repair your sidewalks for 50-90% less than sidewalk replacement, which means you can do more for your city for less.

### A.D.A. COMPLIANCE

Patented technology that brings sidewalks into ADA compliance.

### CLEAN

Our patented containment system captures dust and debris to bring you the cleanest process available.

### SAFE

Decrease liability on your pedestrian walkways.

### DETAILED REPORTING

We track our jobs with honesty and integrity. Invoices show measurements, locations and cost for each hazard.

### LOW IMPACT

Efficient systems with an average removal time of 20 minutes, no sidewalk closures.

### FULL SERVICE CONTRACTOR

Complete GIS integration, mapping, etc.



**ENVIRONMENTAL IMPACT EXAMPLE:** As a member of the U.S. Green Building Council (USGBC) we are proud of the fact that we reduce the impact to landfills and the environment as a result of our service.

Removing and replacing 100 panels would result in approximately 118,500 pounds or 59 tons of concrete being removed (average panel weight of 1185 pounds).

Using Precision Safe Sidewalks for 100 trip hazards results in 0.3 tons of concrete removed and recycled, approximately 141 gallons of gasoline saved, and a reduction of 1.3 metric tons of Co2.



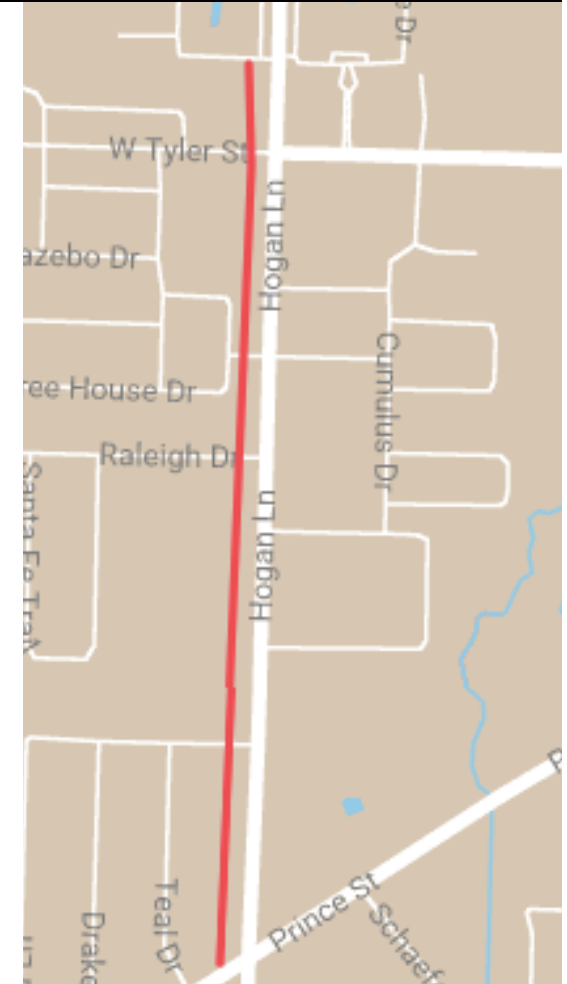
# HOGAN TRIP HAZARD REMOVAL



This summary depicts the repairing of uneven sidewalks in this part of the City of Conway. The footprint area is highlighted in RED.

## PROJECT GOALS & STATISTICS

- Extend the usable life of the city's concrete assets & walkways.
- Eliminate trip hazards within high foot-traffic and right-of-way walk.
- Identify, measure, and photograph all panels in need of demolish and replace within designated footprint.
- **14 Trip Hazards removed**
- **2 High Priority Replacement Identified**
- **5 Medium Priority Replacement Identified**
- **7 Low Priority Replacement Identified**
- Completed in **8 Hours**
- **250 pounds** of concrete removed
- **3.6 Tons** of concrete saved



L : Low Priority Demolish and Replace  
 M : Mid Priority Demolish and Replace  
 H : High Priority Demolish and Replace

Yellow Pin : 1/2" to 5/8"  
 Red Pin : 3/4" to 2"

The map in this project summary shows the resolution area for trip hazards in this area of the city. The area has been surveyed for trip hazards for audit and trends. The accuracy of these maps is dependent on smart phone technology available, and should be relied upon as approximations.



## HOGAN AND TYLER CURB TRIM



**BEFORE**

**After**

**Curb and sidewalk presented a transition un navigable in a wheelchair**

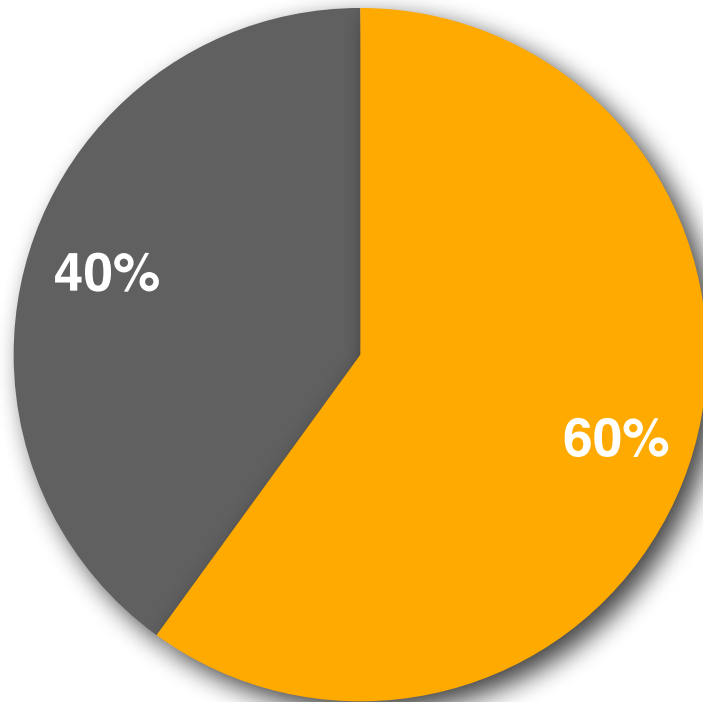
**2 inches removed from curb and sloped at 1:12 to existing sidewalk**

The map in this project summary shows the resolution area for trip hazards in this area of the city. The area has been surveyed for trip hazards for audit and trends. The accuracy of these maps is dependent on smart phone technology available, and should be relied upon as approximations.



# PROPOSED PROJECT

Based off **\$6.25** cost per square foot to remove and replace a sidewalk panel, we estimate the following:



● SAVINGS      ● PSS Cost

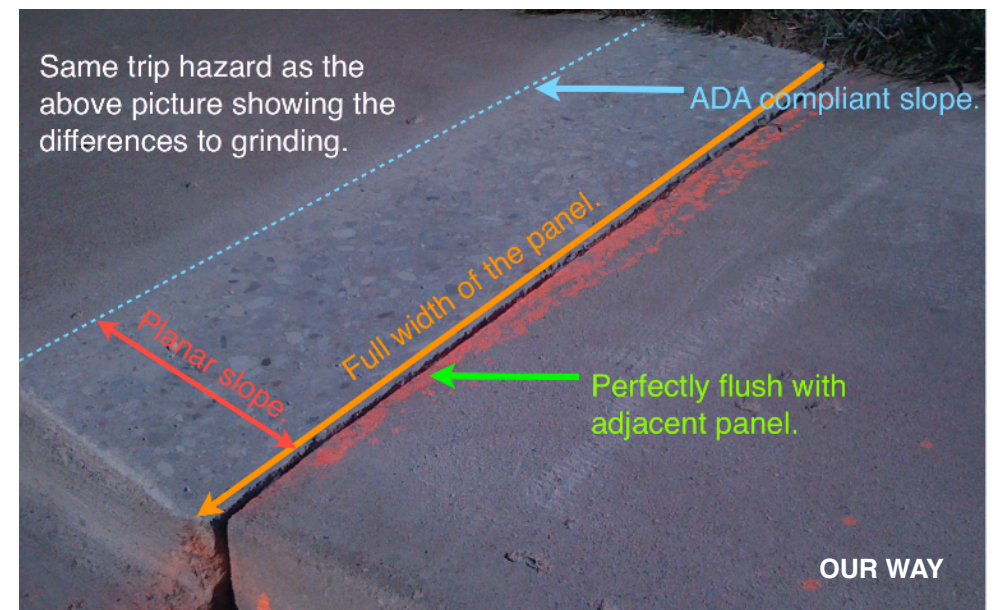
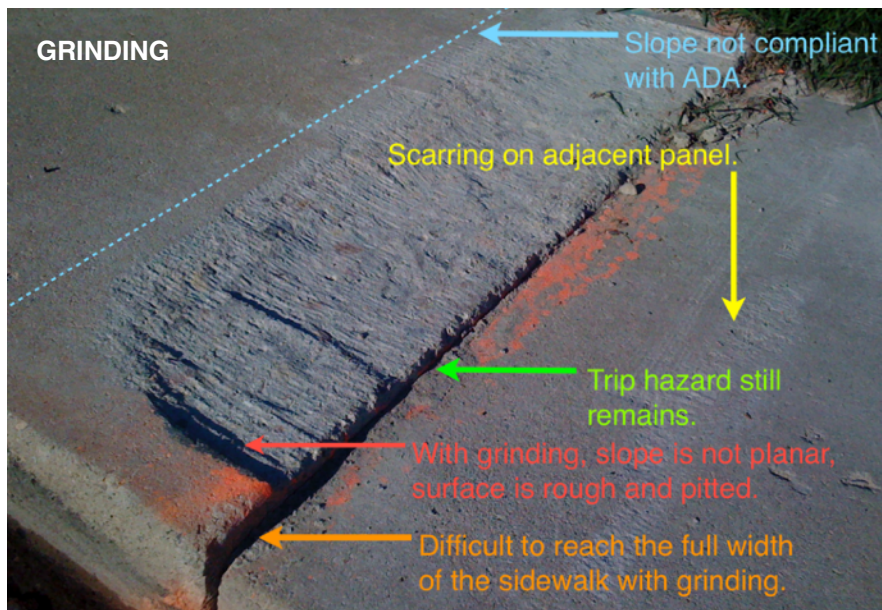
<b>Length of Curb Trim</b>	<b>15 ft</b>
<b>Total Trip Hazard Repairs</b>	<b>14</b>
Cost Using D&R	\$4,200.00
<b>Cost Savings with PSS</b>	<b>-\$2,520.00</b>
<hr/>	
<b>Cost Using PSS</b>	<b>\$1,680.00</b>

The information in this summary is confidential, and is to be used only by the intended recipient and Precision Safe Sidewalks in evaluating the project. Any copying or unauthorized disclosure of this information is prohibited.



## THE PRECISION SAFE SIDEWALKS DIFFERENCE

Our patented technology and innovative sidewalk repairs process leaves you with a beautiful, smooth surface that is ADA compliant - a result you can't get with grinding. Plus, our method saves you money!



The information in this summary is confidential, and is to be used only by the intended recipient and Precision Safe Sidewalks in evaluating the project. Any copying or unauthorized disclosure of this information is prohibited.



## PRECISION SAFE SIDEWALKS REPAIRS



The information in this summary is confidential, and is to be used only by the intended recipient and Precision Safe Sidewalks in evaluating the project. Any copying or unauthorized disclosure of this information is prohibited.