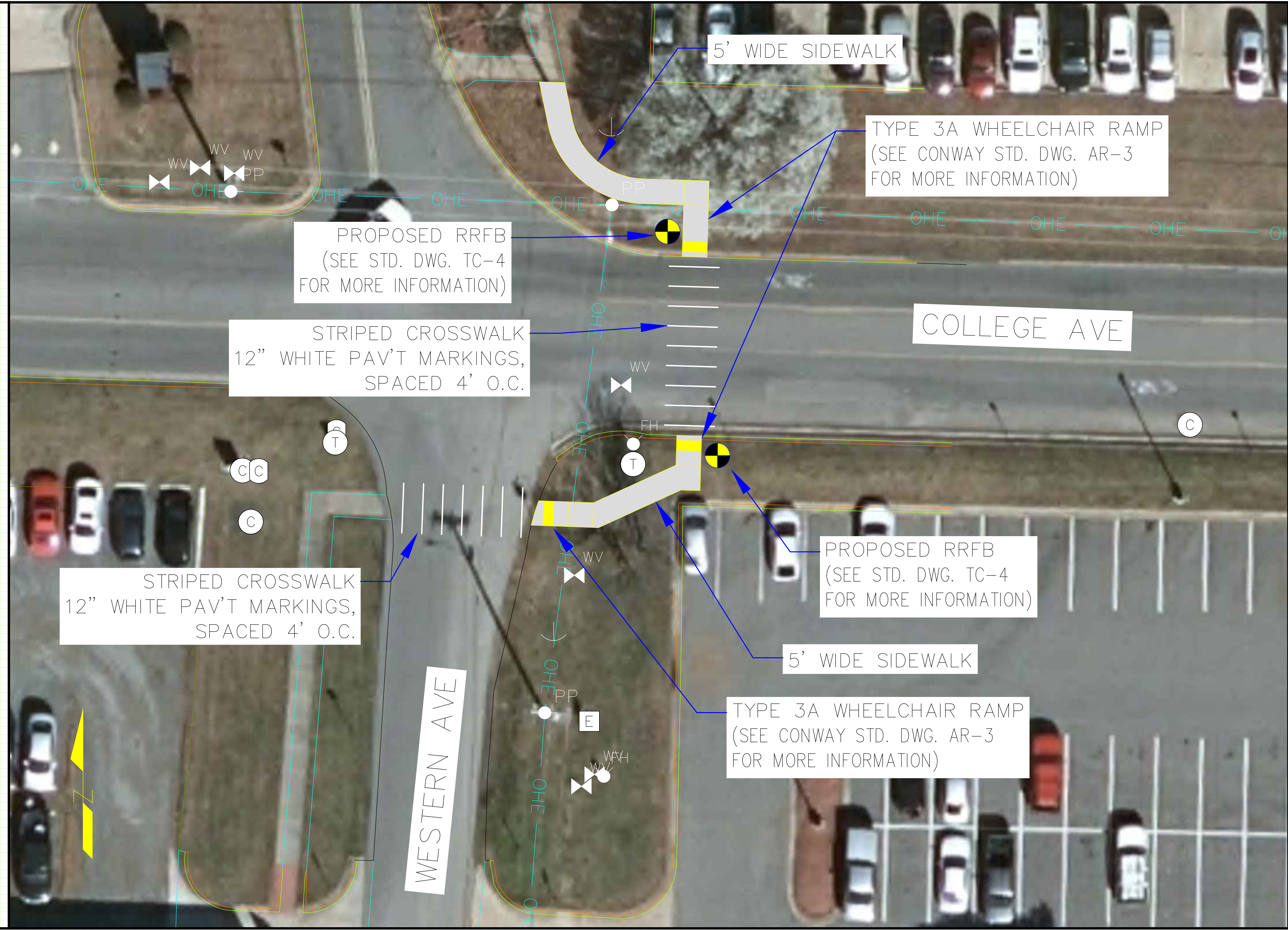


REVISIONS

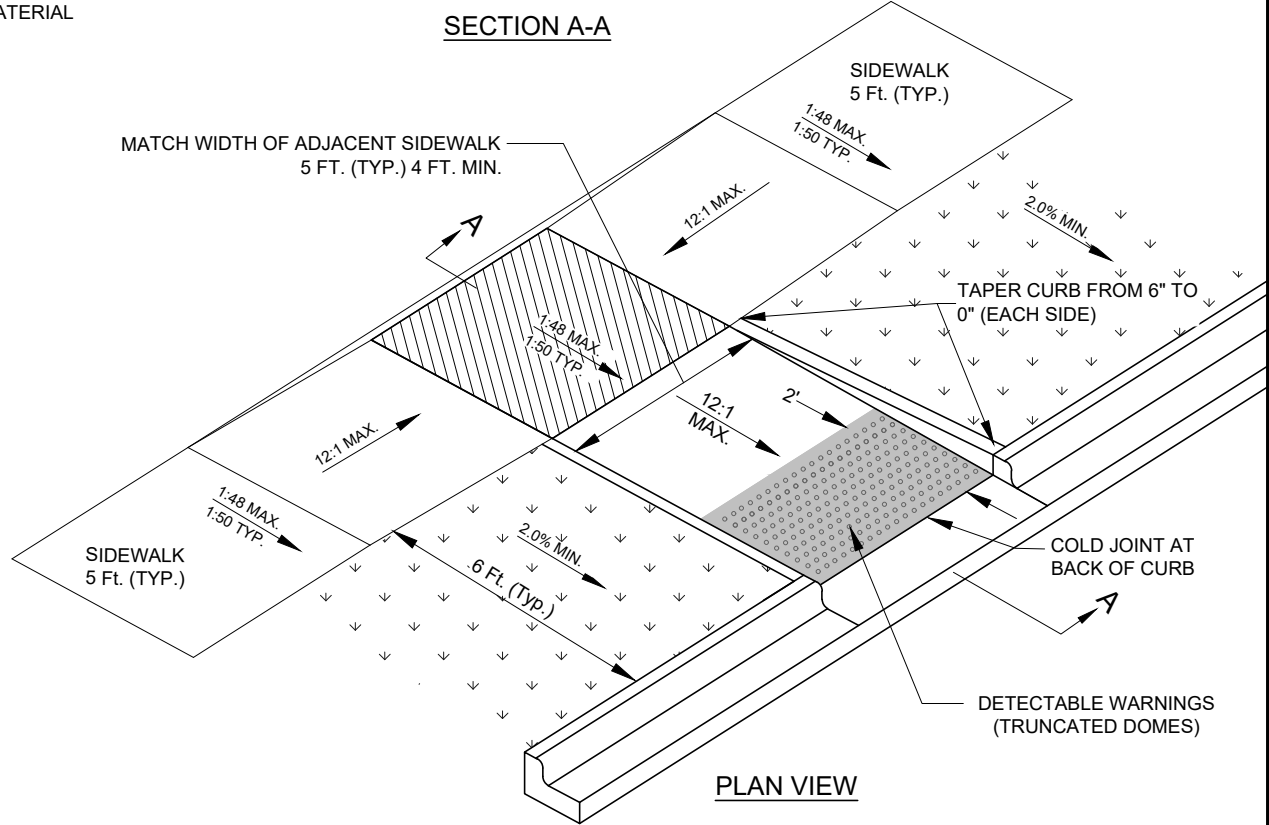
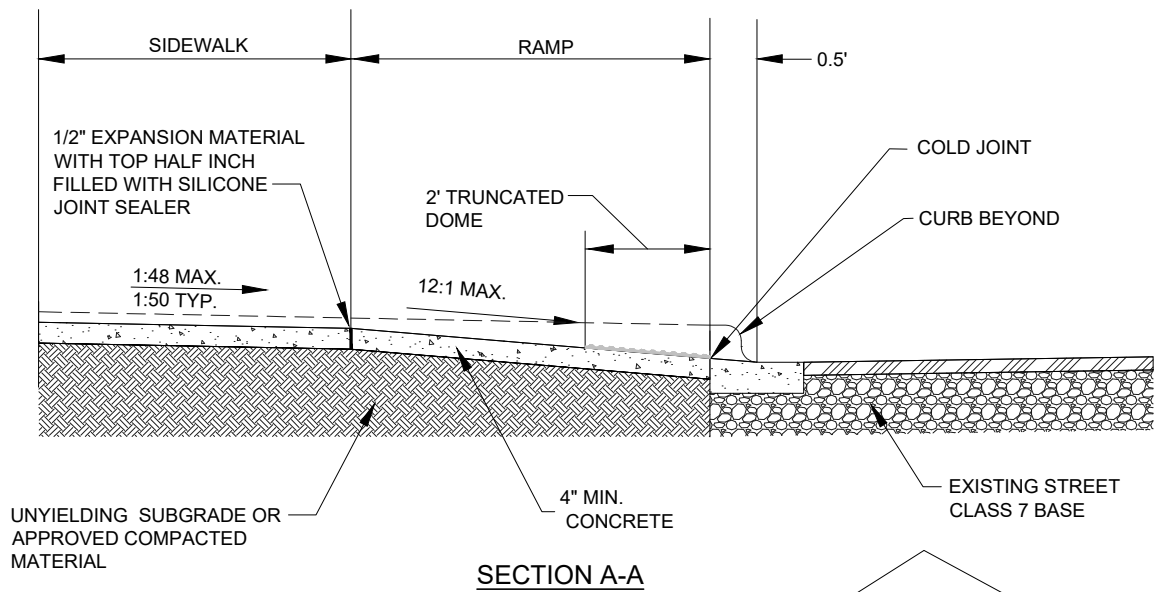
NO.	DESCRIPTION	DATE



**COLLEGE AVE MID-BLOCK CROSSING
 AT WESTERN AVE
 (INCLUDING SIDEWALK, RAMPS, & RRFBs)
 CONWAY, ARKANSAS**

JOB NUMBER: 21-118
 DRAWN BY: MHW1
 CHECKED BY: BFV3
 DATE: 7-16-2021
 SCALE: 1"=XX'

PLAN VIEW
C1



- NOTES:
1. ALL MATERIALS AND CONSTRUCTION SHALL COMPLY WITH SECTION 633 OF THE ARKANSAS HIGHWAY AND TRANSPORTATION DEPARTMENT STANDARD SPECIFICATIONS FOR HIGHWAY CONSTRUCTION, 2014 EDITION.
 2. FULL DEPTH EXPANSION JOINTS (FOUR INCHES) SHALL BE PROVIDED AT THE EDGE OF THE SIDEWALK AND RAMP.
 3. ALL SIDEWALKS AND DRIVEWAY APPROACHES SHALL BE CONSTRUCTED WITH A BROOM FINISH.
 4. ALL SIDEWALKS AND CURB CUTS FOR HANDICAP RAMPS REQUIRE AN INSPECTION PRIOR TO CONCRETE PLACEMENT.

TYPE 3A ACCESS RAMP

N.T.S.

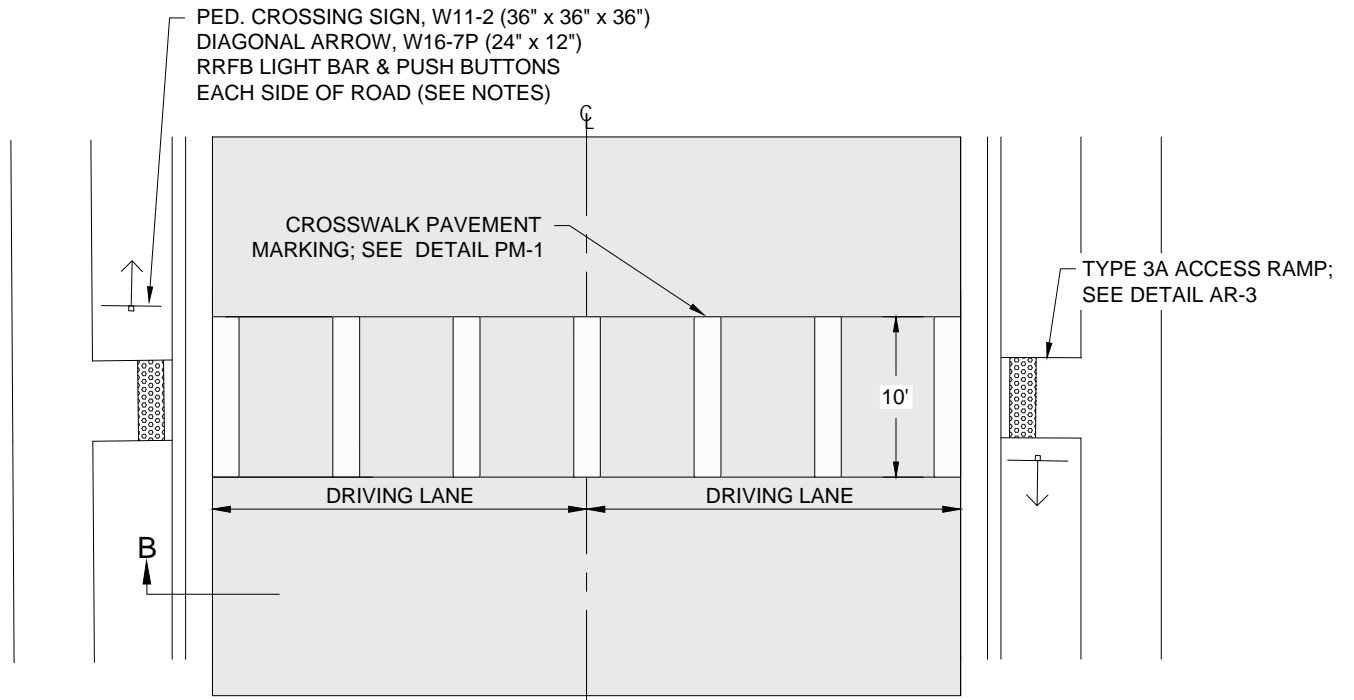


CITY OF CONWAY
 TRANSPORTATION DEPARTMENT
 100 EAST ROBINS
 CONWAY, ARKANSAS 72032
 501-450-6165

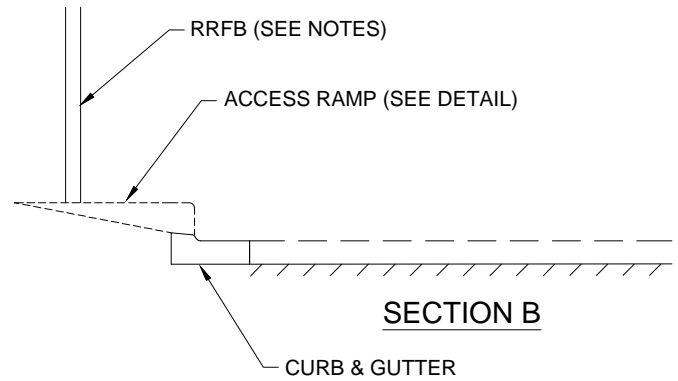
TITLE:	ACCESS RAMP DETAILS	
DESCRIPTION:	STANDARD ACCESS RAMP (TYPE 3A)	
DRAWN BY:	NTR	CHECKED BY: BJV
FILE NAME:	AR-3 TYPE 3A HANDI RAMP.dwg	

DATE:	FEBRUARY 2017
	REVISED

SHEET:
AR-3



CROSSWALK PLAN



NOTES:

1. SEE STANDARD DETAILS TC-1 & PM-1 FOR ALL PAVEMENT MARKING SPECIFICATIONS.
2. ALL SIGN & PAVEMENT MARKING TO BE IN ACCORDANCE WITH THE MUTCD, 2009 EDITION.
3. ALL SIGN POSTS SHALL BE 2" SQUARE GALVANIZED METAL.
4. RRFB INSTALLATIONS SHALL BE CARMANNAH R920-F. SOLAR ENGINE TO BE RAW ALUMINUM FINISH W/ 2"-2.5" PERFORATED SQUARE POLE MOUNT. BI-DIRECTIONAL LIGHT BAR CONFIGURATION AND AUDIBLE PUSH BUTTON STATION.

MID-BLOCK CROSSING

N.T.S.



CITY OF CONWAY
 TRANSPORTATION DEPARTMENT
 100 EAST ROBINS
 CONWAY, ARKANSAS 72032
 501-450-6165

TITLE:	TRAFFIC CALMING DETAILS	DATE: FEBRUARY 2017	SHEET:
DESCRIPTION:	MID-BLOCK CROSSING DETAIL	REVISED	TC-4
DRAWN BY: NTR	CHECKED BY: BFV	FILE NAME: TC-4 MID-BLOCK CROSSING DETAIL.dwg	