



Contact: Austin Horn
Office: 844.450.5005
Mobile: 678.707.2626

SIDEWALK TRIP HAZARD REPAIR SUMMARY:



City of
Conway Arkansas
City of Colleges



Presented to: Finley Vinson
October 2016

The information in this summary is confidential, and is to be used only by the intended recipient and Precision Safe Sidewalks in evaluating the project. Any copying or unauthorized disclosure of this information is prohibited.



COMMITMENT SUMMARY

COST SAVINGS

We'll repair your sidewalks for 50-90% less than sidewalk replacement, which means you can do more for your city for less.

A.D.A. COMPLIANCE

Patented technology that brings sidewalks into ADA compliance.

CLEAN

Our patented containment system captures dust and debris to bring you the cleanest process available.

SAFE

Decrease liability on your pedestrian walkways.

DETAILED REPORTING

We track our jobs with honesty and integrity. Invoices show measurements, locations and cost for each hazard.

LOW IMPACT

Efficient systems with an average removal time of 20 minutes, no sidewalk closures.

FULL SERVICE CONTRACTOR

Complete GIS integration, mapping, etc.

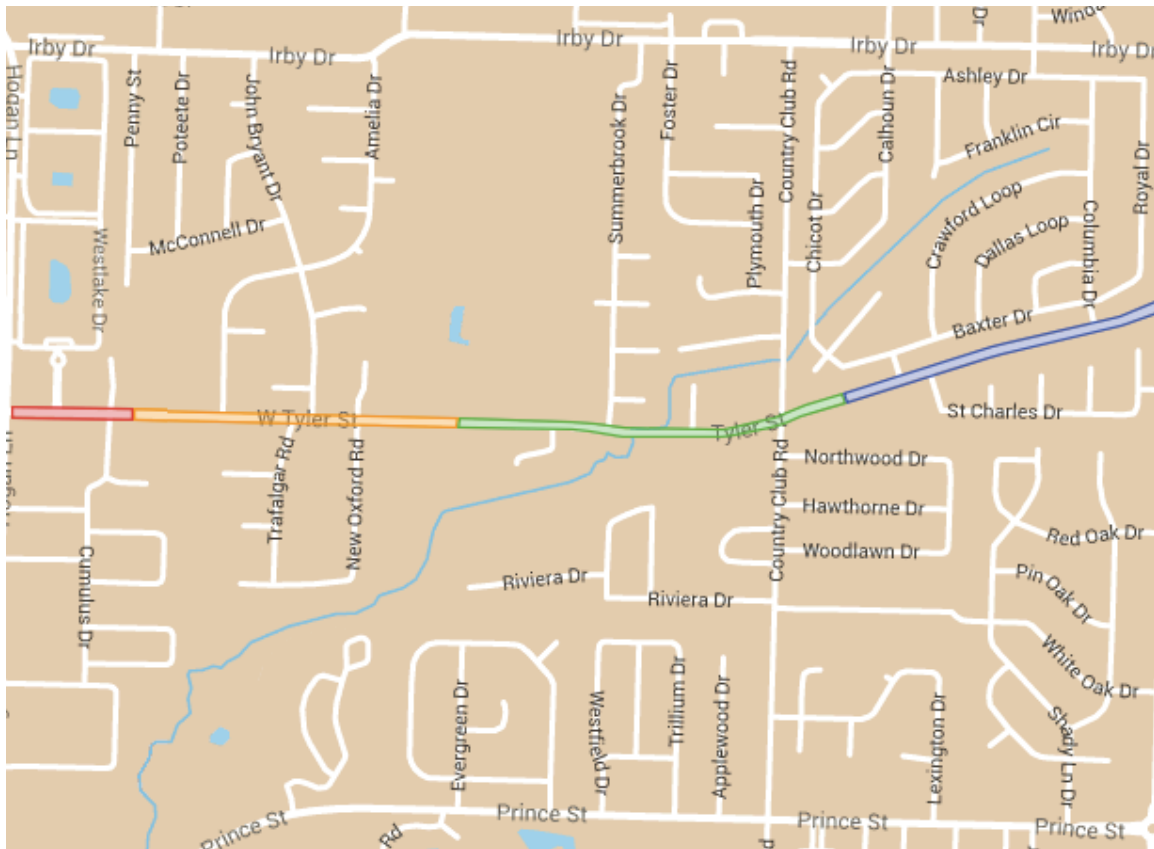


ENVIRONMENTAL IMPACT EXAMPLE: As a member of the U.S. Green Building Council (USGBC) we are proud of the fact that we reduce the impact to landfills and the environment as a result of our service.

Removing and replacing 100 panels would result in approximately 118,500 pounds or 59 tons of concrete being removed (average panel weight of 1185 pounds).

Using Precision Safe Sidewalks for 100 trip hazards results in 0.3 tons of concrete removed and recycled, approximately 141 gallons of gasoline saved, and a reduction of 1.3 metric tons of Co2.

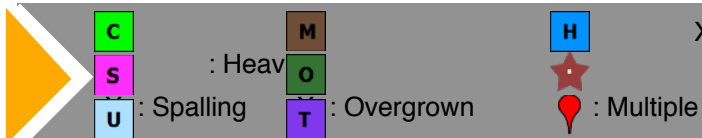
OVERALL FOOTPRINT



This project included repairing uneven sidewalks for the City of Conway at Tyler St from Hogan Ln to Salem Rd in January 2016. The footprint was surveyed for trip hazards and locations in need of replacement. All trip hazards above 5/8" were repaired within the footprint.

Project Statistics

- Linear feet of trip hazards repaired: **121.5 ft**
- Average height: **0.91"**
- Footprint length: **1.5 miles**
- Total time: **5 hours**
- Concrete removed: **0.15 tons**
- Concrete saved: **16.59 tons**

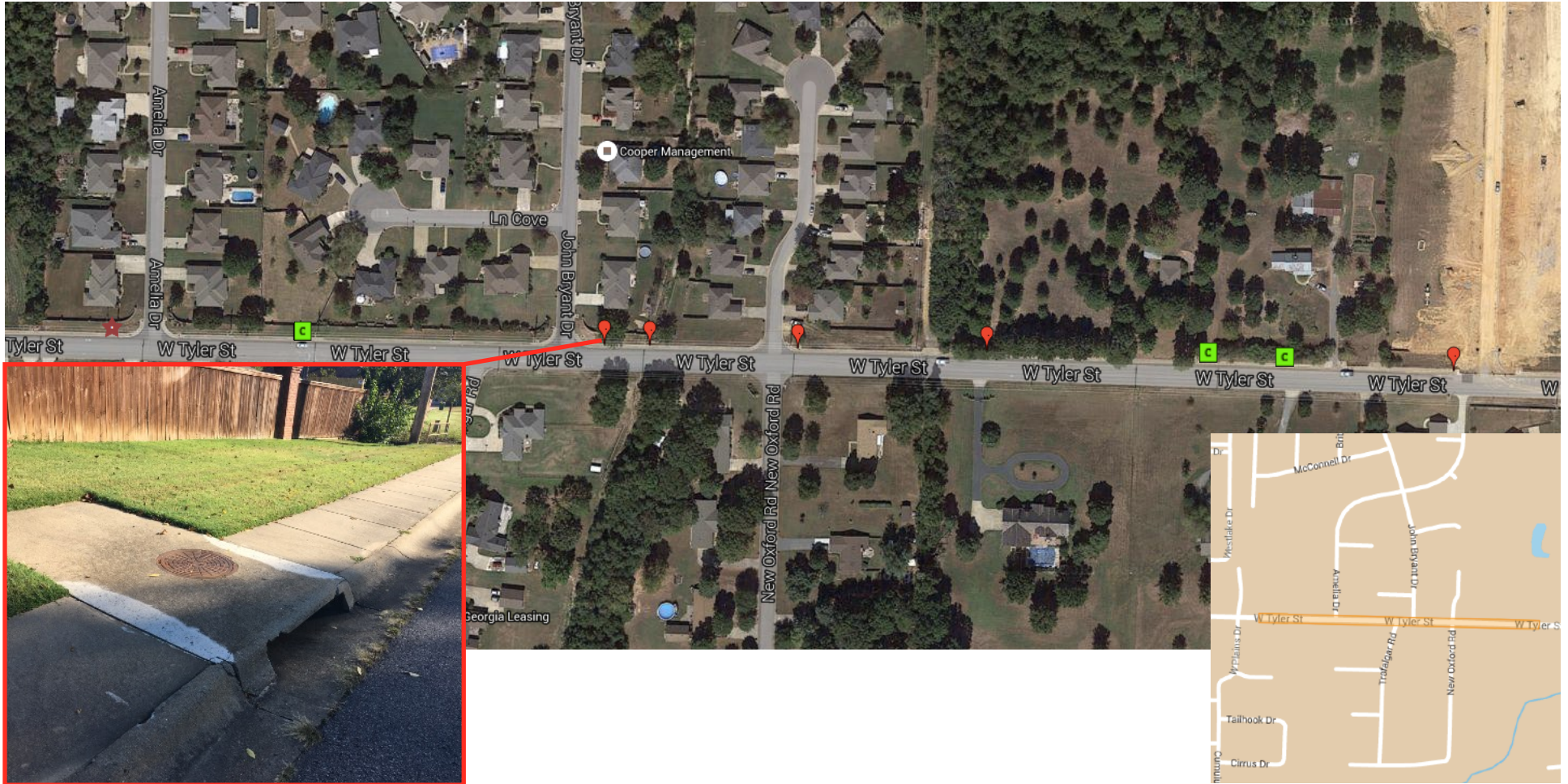


X : Cracking

X : Missing

The map in this project summary shows the resolution area for trip hazards in this area of the city. The area has been surveyed for trip hazards for audit and trends. The accuracy of these maps is dependent on smart phone technology available, and should be relied upon as approximations.

TYLER ST (CENTER-WEST SECTION)



C : Cracking	M : Missing	H : Heaving
S : Spalling	O : Overgrown	★ : Multiple
U : Utility	T : Tree Damage	📍 : 5/8" to 2"

The map in this project summary shows the resolution area for trip hazards in this area of the city. The area has been surveyed for trip hazards for audit and trends. The accuracy of these maps is dependent on smart phone technology available, and should be relied upon as approximations.

TYLER ST (CENTER-EAST SECTION)



- | | | |
|---------------------|------------------------|--------------------|
| C : Cracking | M : Missing | H : Heaving |
| S : Spalling | O : Overgrown | ★ : Multiple |
| U : Utility | T : Tree Damage | 📍 : 5/8" to 2" |

The map in this project summary shows the resolution area for trip hazards in this area of the city. The area has been surveyed for trip hazards for audit and trends. The accuracy of these maps is dependent on smart phone technology available, and should be relied upon as approximations.

TYLER ST (EAST SECTION)



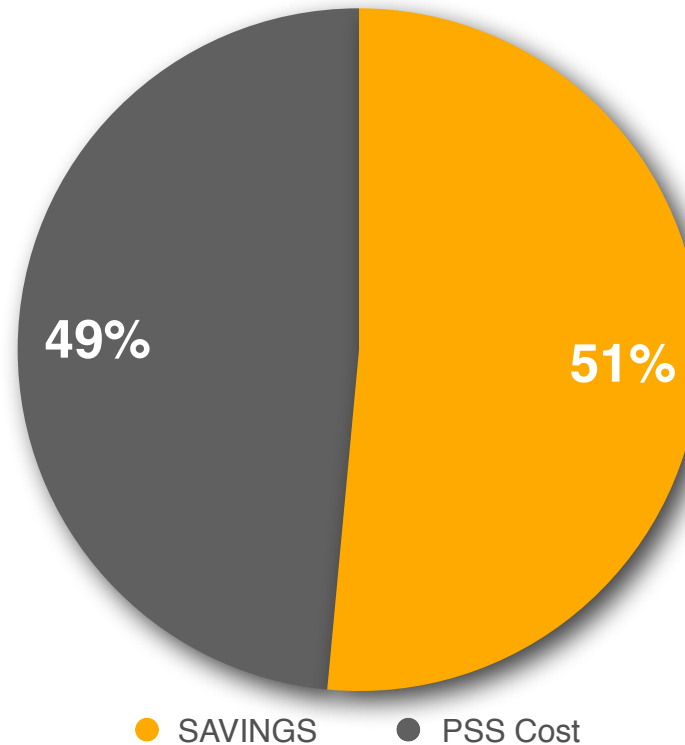
The map in this project summary shows the resolution area for trip hazards in this area of the city. The area has been surveyed for trip hazards for audit and trends. The accuracy of these maps is dependent on smart phone technology available, and should be relied upon as approximations.



COST SAVINGS ANALYSIS

Based off \$ 6.50 cost per square foot to remove and replace a sidewalk panel, we estimate the following:

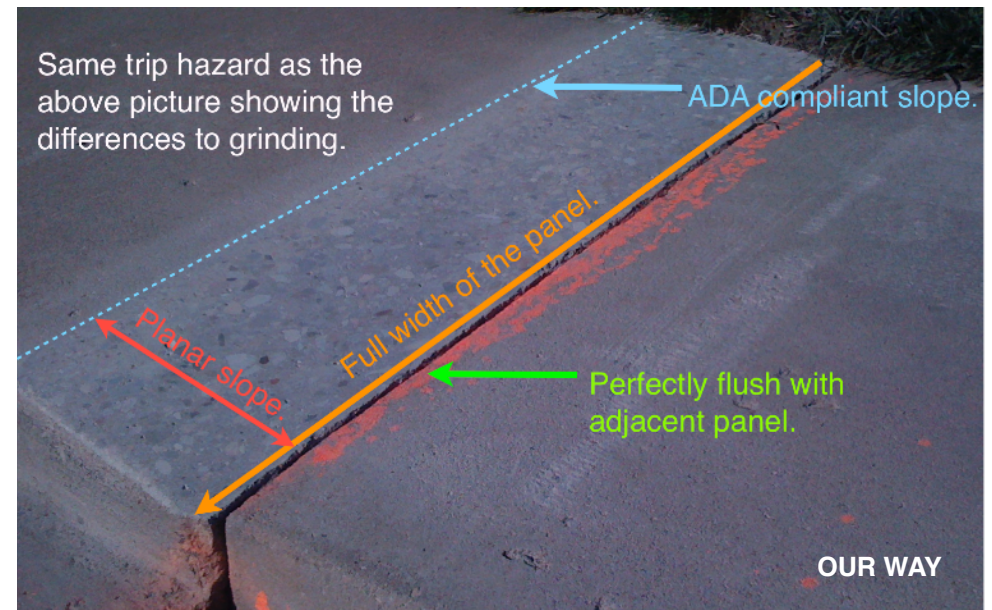
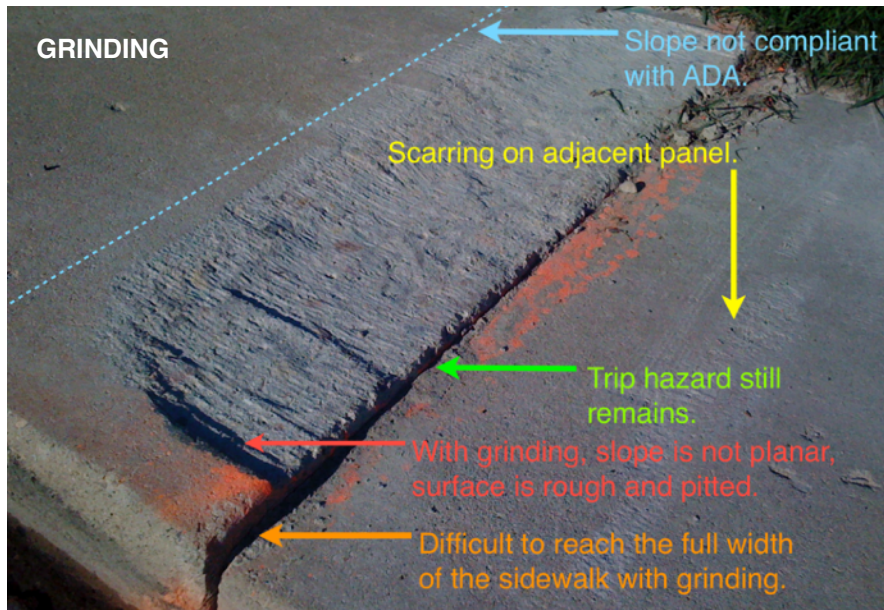
Total cost using Precision Safe Sidewalks is **\$ 2,794.50**, an estimated savings of **\$ 2,965.50**.



The information in this summary is confidential, and is to be used only by the intended recipient and Precision Safe Sidewalks in evaluating the project. Any copying or unauthorized disclosure of this information is prohibited.

THE PRECISION SAFE SIDEWALKS DIFFERENCE

Our patented technology and innovative sidewalk repairs process leaves you with a beautiful, smooth surface that is ADA compliant - a result you can't get with grinding. Plus, our method saves you money!



PRECISION SAFE SIDEWALKS REPAIRS



The information in this summary is confidential, and is to be used only by the intended recipient and Precision Safe Sidewalks in evaluating the project. Any copying or unauthorized disclosure of this information is prohibited.