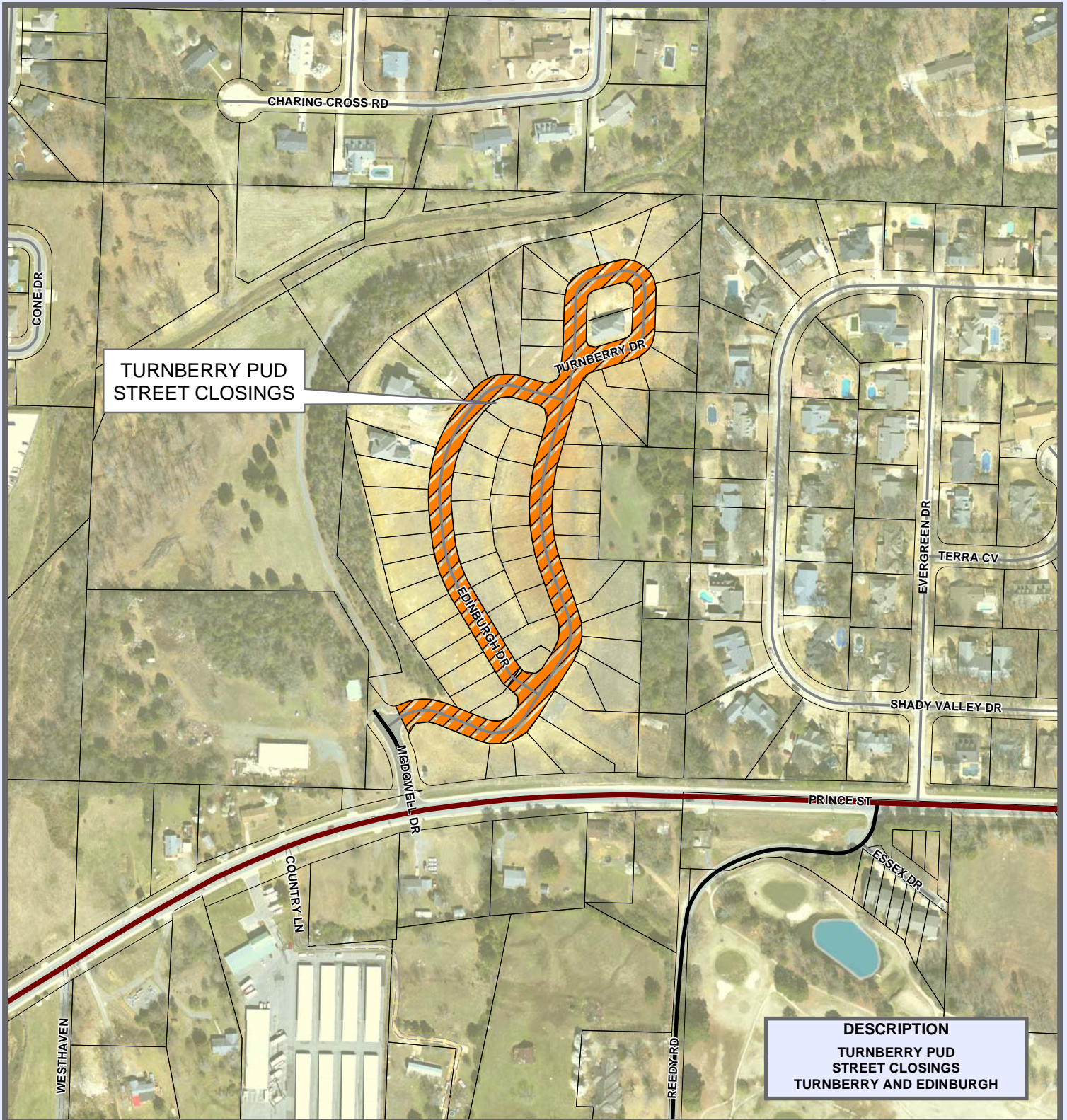




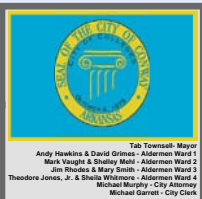


# CITY OF CONWAY

## STREET CLOSINGS -- TURNBERRY PUD



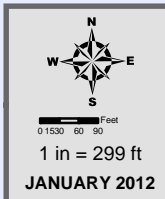
**DESCRIPTION**  
**TURNBERRY PUD**  
**STREET CLOSINGS**  
**TURNBERRY AND EDINBURGH**



INTERSTATE	LOT LINE
MAJOR ARTERIAL	STREAMS
MINOR ARTERIAL	LAKES & PONDS
COLLECTOR	CITY LIMITS
RESIDENTIAL	
PRIVATE ROAD	
INTERSTATE RAMP	
RAILROADS	

Residential		Industrial	
R-1	MF-1	I-1	I-1
R-2A	MF-2	RU-1	S-1
R-2	MF-3	I-3	
HR	RMH		
SR			

Commercial Office		Special	
C-1	O-1	SP	
C-2	O-2	A-1	
C-3	O-3	PUD	
C-4			



THIS MAP WAS PREPARED BY THE CITY OF CONWAY PLANNING AND DEVELOPMENT DEPARTMENT FOR ITS USE, AND MAY BE REVISED AT ANY TIME WITHOUT NOTIFICATION TO ANY USER. THE CITY OF CONWAY PLANNING AND DEVELOPMENT DEPARTMENT DOES NOT GUARANTEE THE CORRECTNESS OR ACCURACY OF ANY FEATURES ON THIS MAP. CITY OF CONWAY ASSUMES NO RESPONSIBILITY IN CONNECTION THEREWITH.

CONTACT INFORMATION  
 LANDMARK GIS WEBSITE:  
 gis.cityofconway.org (UNDER DEVELOPMENT)  
 E-MAIL: Jason.Lyon@CityOfConway.org

**CONTRACT FOR TRANSPORTATION SERVICES WITH  
BOYS & GIRLS CLUB OF FAULKNER COUNTY**

For the fee of \$20,000 The Boys & Girls Club of Faulkner County shall provide transportation services. Length of contract shall be from January 1<sup>st</sup>, 2012 to December 31, 2012.

Transportation services shall include but not limited to:

After School transportation  
Summer transportation  
Transportation Expenses  
Transportation needs as permitted by program

All services shall be provided on request and as vehicle scheduling permits

The Boys & Girls Club of Faulkner County shall maintain accurate records of all transportation services. Any further documentation necessary or required by City, State, or Federal requirements will be maintained and available upon request for review or audit by City officials.

The Boys & Girls Club of Faulkner County will provide services to all mentioned above classes without regard to race, color, religion, sex, national origin, disability, veteran status, or marital status.

\_\_\_\_\_  
Mayor Tab Townsell  
City of Conway

\_\_\_\_\_  
Robert Wright, Chief Professional Officer  
Boys & Girls Club/Faulkner County

\_\_\_\_\_  
Michael O. Garrett  
City Clerk/Treasurer  
City of Conway

\_\_\_\_\_  
Board President  
Boys & Girls Club/Faulkner County



**BOYS & GIRLS CLUBS**  
OF FAULKNER COUNTY

The Boys & Girls Club  
of Faulkner County, Inc.  
Post Office Box 488  
Conway, Arkansas 72033  
Phone: 501-329-8849

December 27, 2011

Honorable Mayor Tab Townsell  
City of Conway  
Conway, Arkansas 72034

RE: Transportation Funding

Dear Mayor Townsell:

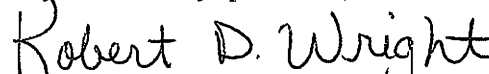
I am writing this letter to request transportation funding for the Boys and Girls Club of Faulkner County. The Boys and Girls Club of Faulkner County provides young people with a safe, supervised and positive place to spend their time after school and during the summer. In our neighborhood clubs, children are engaged in safe, educational and fun activities that help them develop the skills necessary to be successful in life.

In a recent survey conducted by United Way, the citizens of Conway identified the lack of transportation as their principal concern. The Boys and Girls Club of Faulkner County has to provide this vital services to transport children from all elementary school in Conway, Bob Courtway Middle School, Carl Stuart Middle School, Ruth Doyle intermediate School and Conway High School- East Campus.

The Boys and Girls Club is requesting \$20,000 to cover a part of the expenses for the transportation service. This money will assist with gas, maintenance, insurance and salaries of the drivers.

Thank you for consideration with the partnership with the Boys and Girls Club.

If you have any questions, Please contact me at 501.329.8849

  
Robert D. Wright, Chief Professional Officer

Cc: City Council Members



*"Great Futures Start Here"*

**CONTRACT FOR TRANSPORTATION SERVICES WITH  
FAULKNER COUNTY COUNCIL ON DEVELOPMENTAL DISABILITIES**

For the fee of \$30,000 Faulkner County Council on Development Disabilities shall provide transportation services to persons who are 18 years of age or older with developmental disabilities. Length of contract shall be from January 1<sup>st</sup>, 2012 to December 31<sup>st</sup>, 2012.

Transportation services shall include but not limited to:

Employment transportation  
Transportation needs as permitted by program

All services shall be provided on request and as vehicle scheduling permits

Faulkner County Council on Developmental Disabilities shall maintain accurate records of all transportation services. Any further documentation necessary or required by City, State, or Federal requirements will be maintained and available upon request for review or audit by City officials.

Faulkner County Council on Developmental Disabilities will provide services to all mentioned above classes without regard to race, color, religion, sex, national origin, disability, veteran status, or marital status.

---

Mayor Tab Townsell  
City of Conway

---

Rennia Johnston, Executive Director  
FCC/DD

---

Michael O. Garrett  
City Clerk/Treasurer  
City of Conway

---

Kathy Hall  
Board President  
FCC/DD

FCC/DD  
Faulkner County Council on Developmental Disabilities  
1301 North Museum Road  
P.O. Box 2407  
Conway, AR 72033  
Phone: (501) 327-3037

December 27, 2011

Honorable Mayor Tab Townsell  
City of Conway  
Conway, Arkansas 72034

RE: Transportation Funding

Dear Mayor Townsell:

As Director of the Faulkner County Council on Developmental Disabilities, I am writing you and the City Council to request your assistance. As you are aware FCC/DD has been providing transportation services to the developmentally disabled, physically disabled and disadvantaged citizens of Conway for many years. Our transportation services include: employment, medical, educational and personal needs. FCC/DD received a new wheelchair accessible van from the Federal Transit Association in April 2011 in order to keep up with the demand for its services.

Mr. Townsell, the consumers we transport are among the most vulnerable in the community. Without the services FCC/DD provides these individuals will simply not have access to vital community resources such as grocery stores and medical facilities. The disadvantaged citizens in our community simply cannot afford the fee for a taxi and the disabled citizens depend on our transportation services to have independence and a better quality of life. FCC/DD uses local vendors for all maintenance and fuel and by providing transportation to disabled individuals to employment, we are enabling people (who would otherwise be unable to work) to become tax-paying members of our community who spend the money they earn with our local businesses.

FCC/DD continuously seeks other funding sources. Because we have served the city in this capacity for many years we continue to have increased demand for our services. FCC/DD has used reserves thus far in order to not cut services, however; without the support of the City we will be unable to continue.

We are requesting financial support in the amount of \$30,000. Thank you for your time and the time of the Council. If further information is needed, please contact me at (501) 327-3037. On behalf of our Board of Directors, I would like to thank you and the City Council for your financial assistance and cooperation in the previous years.

Sincerely,

A handwritten signature in cursive script that reads "Rennie Johnston".

Rennie Johnston

Executive Director, FCC/DD







## CONWAY PLANNING COMMISSION

1201 OAK STREET CONWAY, AR 72032 (501) 450-6105

September 20, 2011

Council Members  
Conway, AR 72032

Dear Council Members:

Robert Henry's request on behalf of John and Linda Irby for rezoning from A-1 to C-2 for property located at the northeast corner of Meadowlake and Salem Roads with the legal description

Part of the NW $\frac{1}{4}$ -SW $\frac{1}{4}$ , Section 35, T-6-N R-14-W, Faulkner County, Arkansas, described as commencing at the NE Corner of said NW $\frac{1}{4}$ -SW $\frac{1}{4}$  and run S-1°38'10"W along the East line of said NW $\frac{1}{4}$ -SW $\frac{1}{4}$ , 748.33' to the point of beginning; thence continue S-1°38'10"-W, 568.70' to the SE Corner of said NW $\frac{1}{4}$ -SW $\frac{1}{4}$ ; thence N-88°21'20"-W along the South line of said NW $\frac{1}{4}$ -SW $\frac{1}{4}$ , 358.59'; thence N-1°38'10"-E, 29.22'; thence N-43°50'14"-W, 109.25' to the East right of way of Salem Road; thence 647.54' along the arc of a Curve to the left having a radius of 994.0' and a chord bearing of N-44°57'31"-E, a distance of 636.15' to the point of beginning. Containing 2.75 Acres more or less.

This Tract is subject to a 40' right of way along the South side for Meadowlake Road.

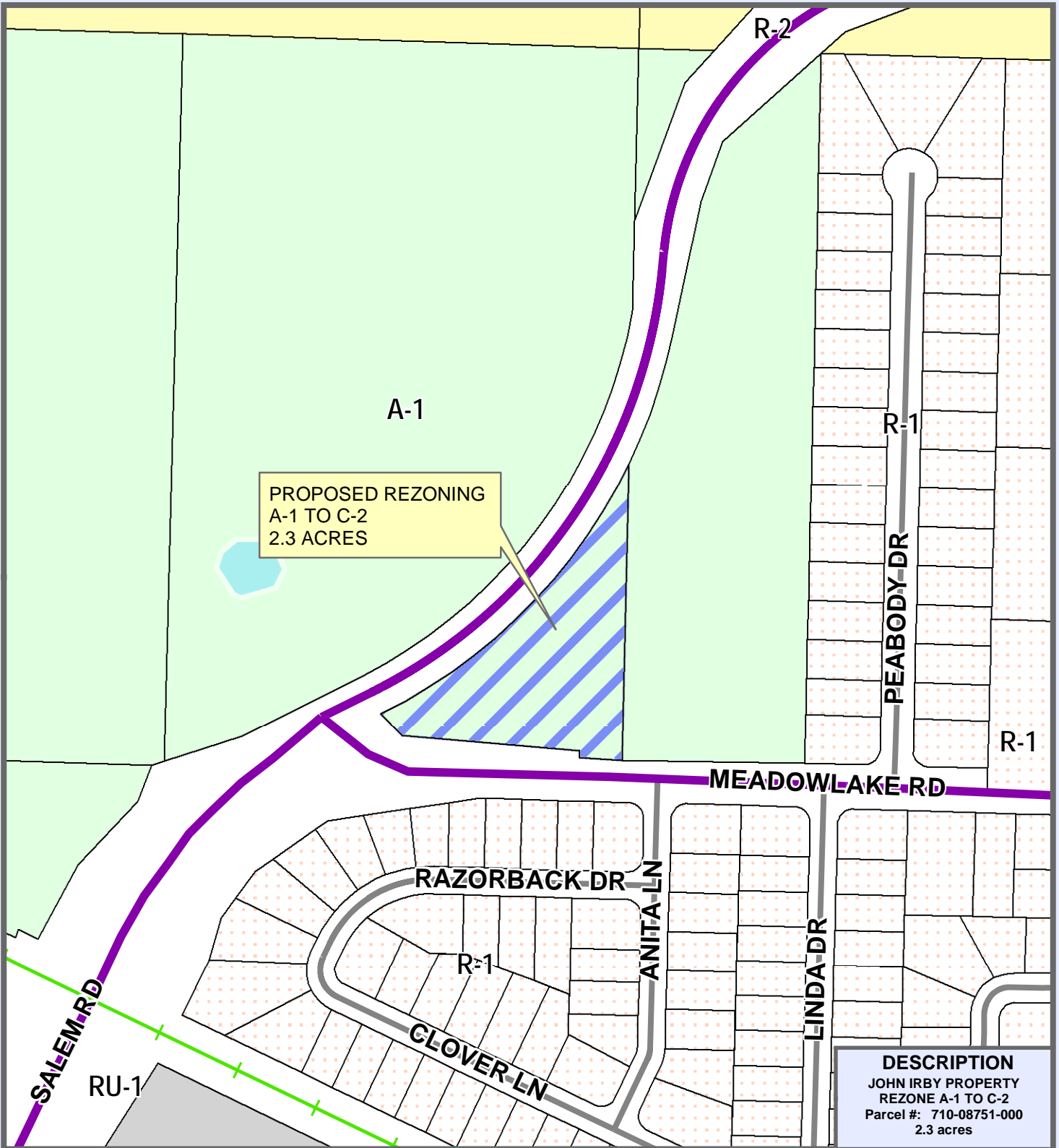
was reviewed by the Planning Commission at its regular meeting on July 18, 2011. Following the public hearing, the Planning Commission voted 6 – 0 to hold the item in committee until the August meeting. That meeting was not held for lack of a quorum. At the next regular meeting on September 19, the Planning Commission voted 6 – 1 that the request be sent to the City Council with a recommendation for denial. Applicant is now appealing that denial and thereby the denial of the conditional use before the City Council at this September 27 meeting.

Submitted by,

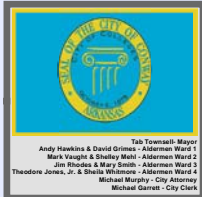
Kent Mathis, Chairman  
Planning Commission

# CITY OF CONWAY

## IRBY REZONE A-1 TO C-2



**DESCRIPTION**  
 JOHN IRBY PROPERTY  
 REZONE A-1 TO C-2  
 Parcel #: 710-08751-000  
 2.3 acres



INTERSTATE	LOT LINE	Residential	Industrial
MAJOR ARTERIAL	STREAMS	R-1	MF-1
MINOR ARTERIAL	LAKES & PONDS	R-2A	MF-2
COLLECTOR	CITY LIMITS	R-2	MF-3
RESIDENTIAL		HR	RMH
PRIVATE ROAD		SR	
INTERSTATE RAMP		Commercial	Office
RAILROADS		C-1	O-1
		C-2	O-2
		C-3	O-3
		C-4	Special
			SP
			S-1
			A-1
			PUD
			TJ
			RU-1
			I-1
			I-3



THIS MAP WAS PREPARED BY THE CITY OF CONWAY PLANNING AND DEVELOPMENT DEPARTMENT FOR ITS USE AND MAY BE REVISED AT ANY TIME WITHOUT NOTIFICATION TO ANY USER. THE CITY OF CONWAY PLANNING AND DEVELOPMENT DEPARTMENT DOES NOT GUARANTEE THE CORRECTNESS OR ACCURACY OF ANY FEATURES ON THIS MAP. CITY OF CONWAY ASSUMES NO RESPONSIBILITY IN CONNECTION THEREWITH.

CONTACT INFORMATION  
 LANDMARK GIS WEBSITE  
 gis.cityofconway.org (UNDER DEVELOPMENT)  
 E-MAIL: Jason.Lyon@CityOfConway.org

Printing Date: 7/10/11  
 File Monthly Map: 201107JUL2011IRBY REZ.mxd



## CONWAY PLANNING COMMISSION

1201 OAK STREET CONWAY, AR 72032 (501) 450-6105

September 20, 2011

Council Members  
Conway, AR 72032

Dear Council Members:

Robert Henry's request on behalf of John and Linda Irby for a conditional use permit to allow fuel pumps for property located at 2710 Meadowlake Road (the northeast corner of Meadowlake and Salem Roads) with the legal description

Part of the NW $\frac{1}{4}$ -SW $\frac{1}{4}$ , Section 35, T-6-N R-14-W, Faulkner County, Arkansas, described as commencing at the NE Corner of said NW $\frac{1}{4}$ -SW $\frac{1}{4}$  and run S-1°38'10"W along the East line of said NW $\frac{1}{4}$ -SW $\frac{1}{4}$ , 748.33' to the point of beginning; thence continue S-1°38'10"-W, 568.70' to the SE Corner of said NW $\frac{1}{4}$ -SW $\frac{1}{4}$ ; thence N-88°21'20"-W along the South line of said NW $\frac{1}{4}$ -SW $\frac{1}{4}$ , 358.59'; thence N-1°38'10"-E, 29.22'; thence N-43°50'14"-W, 109.25' to the East right of way of Salem Road; thence 647.54' along the arc of a Curve to the left having a radius of 994.0' and a chord bearing of N-44°57'31"-E, a distance of 636.15' to the point of beginning. Containing 2.75 Acres more or less.

This Tract is subject to a 40' right of way along the South side for Meadowlake Road.

was on the agenda for the Planning Commission's regular meeting on July 18, 2011. However, the accompanying rezoning was held in committee and no public hearing occurred on the conditional use request. At its September 19 regular meeting, the Planning Commission voted 6 – 1 that the rezoning request be sent to the City Council with a recommendation for denial thereby rendering the conditional use request moot. However, the Commission did take public comment and discuss conditions that might be placed on a conditional use should the rezoning and attendant conditional use denial be appealed to the City Council. Those conditions are as follows.

1. Hours of operation shall be 6:00 a.m. to 11:00 p.m.
2. No external sound system allowed.
3. Right of way for future roundabout as required by City Engineer.
4. Stage 2 vapor recovery system for fuel dispensers required.
5. Eight-foot solid wood privacy fence all along the east property boundary keeping a 7-foot green space around the property is required.
6. Gas deliveries shall be between 6:00 a.m. to 8:00 a.m., and 6:00 p.m. to 11:00 p.m.
7. Trash pickup shall be between 6:00 a.m. and 6:00 p.m.
8. No flags or banner signs allowed.
9. Setbacks and landscaping shall be as required by Development Review.
10. Directional lighting shall be inward, downward, and shrouded.

Submitted by,

Kent Mathis, Chairman  
Planning Commission