

*R-86-26* #26  
RESOLUTION

BE IT RESOLVED, by the City Council of the City of Conway, Arkansas, that WHEREAS, the City Council of the City of Conway, Arkansas, has been informed that Pat Bruich and wife, Sammi Bruich, have petitioned or will petition the County Court of Faulkner County, Arkansas, for annexation into the City of Conway, Arkansas, of the following described lands in Faulkner County, Arkansas:

Part of the SW 1/4 SW 1/4, Section 34, Township 6 North, Range 14 West, described as beginning at a point 165 feet west of the southeast corner of said SW 1/4 SW 1/4; thence continue west 140 feet; thence north 02 degrees 55 minutes 40 seconds west 233.6 feet; thence east 140 feet; thence south 02 degrees 55 minutes 40 seconds east 233.6 feet to the point of beginning, containing 0.75 acre, more or less, SUBJECT to right-of-way of public road along the south 25 feet thereof.

WHEREAS, it is desired to indicate unto the County Court of Faulkner County, Arkansas, the attitude of the City of Conway, Arkansas, toward such annexation.

NOW, BE IT RESOLVED by the City Council of the City of Conway, Arkansas, that said City Council does hereby declare its willingness to accept said lands as a part of the City of Conway, Arkansas, provided said County Court of Faulkner County, Arkansas, shall, in the exercise of its discretion, deem said lands suitable for annexing unto the City of Conway, Arkansas.

PASSED this 18<sup>th</sup> day of August, 1986.

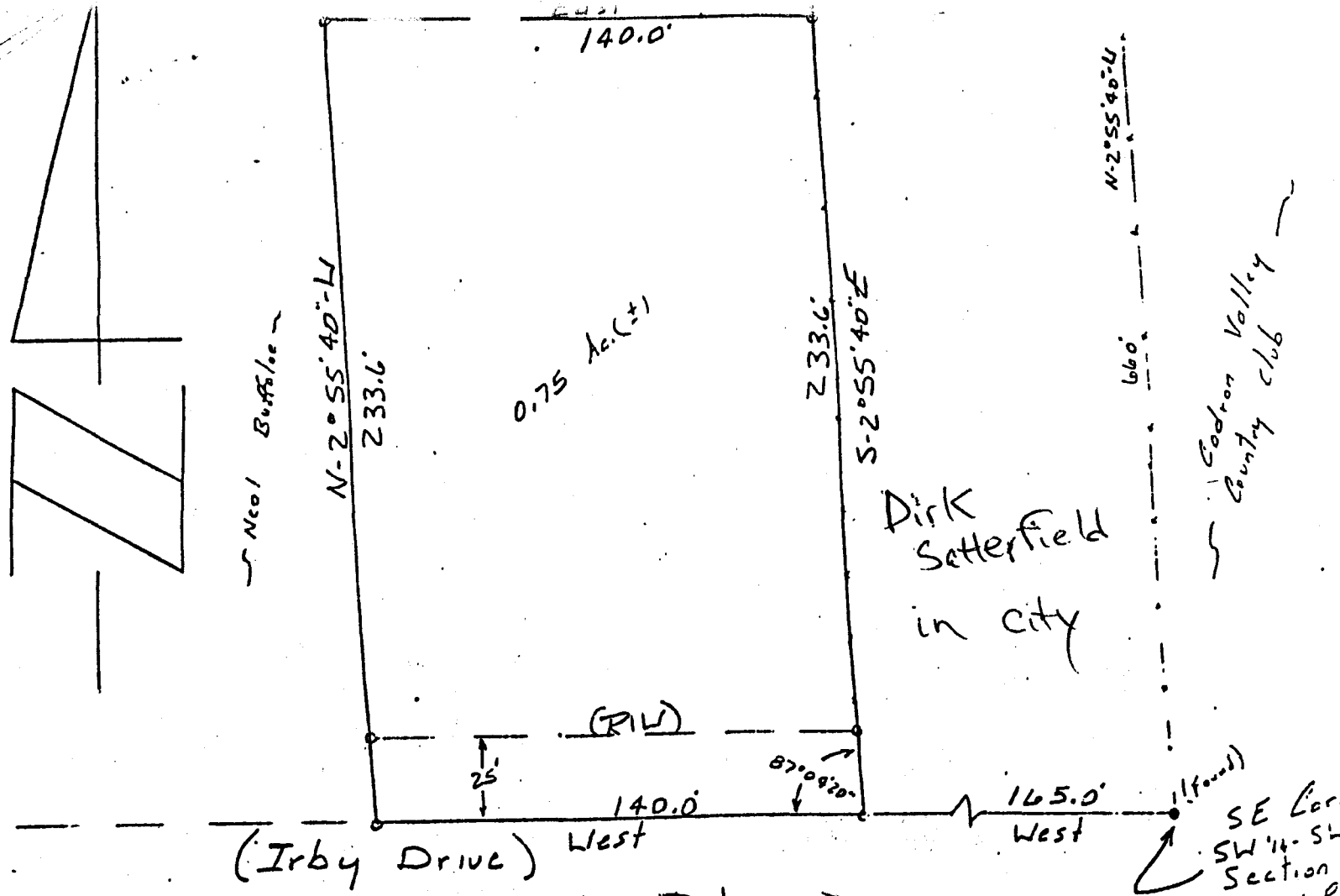
APPROVED:

*Bir W. [Signature]*

Mayor

ATTEST:

*Matthew [Signature]*  
City Clerk

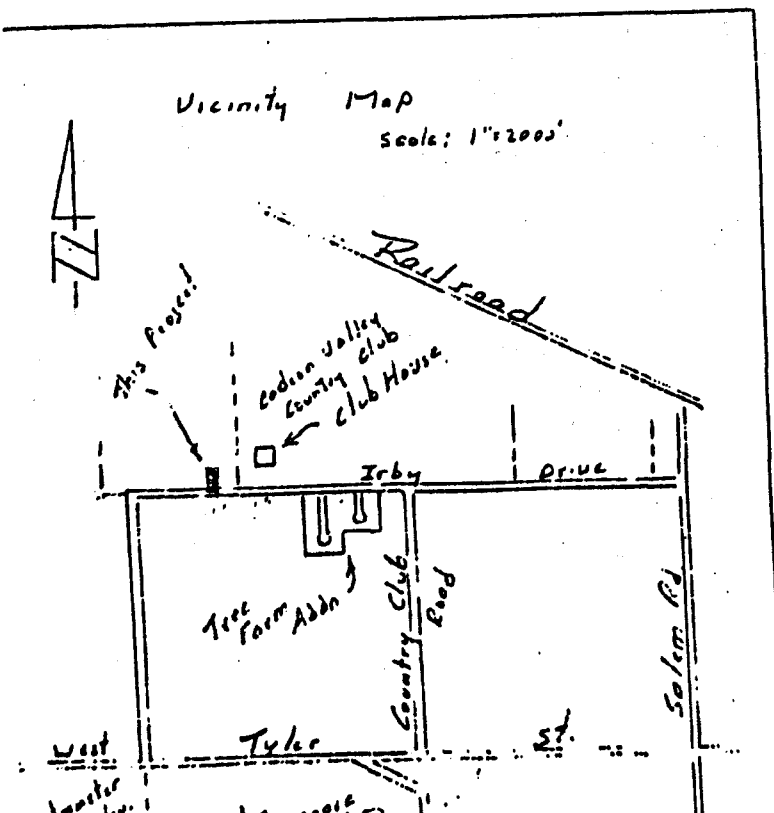


(Irby Drive) West

Mike Irby → In City

SE Corner SW 1/4 - SW 1/4 Section T-6-N R-14-W

Part of the SW 1/4 - SW 1/4, Section 34, T-6-N R-14-W, Faulkner County, Arkansas. Described as beginning at a point 165.0' West of the SE Corner of said SW 1/4 - SW 1/4, thence continue West, 140.0'; thence N-2°55'40"-W, 233.6'; thence East, 140.0'; thence S-2°55'40"-E, 233.6' to the point of beginning. Containing 0.75 Acres (±). The South 25' of this Tract is for use as a Public Road.



**JAMES E. ROSS**  
 REGISTERED  
 LAND SURVEYOR  
 STATE OF  
 ARKANSAS  
 NO. 750  
*James E. Ross*  
 SIGNATURE

For: Pat Bruch,  
 Date: 6-6-86  
 Scale: 1" = 50'  
 o : Iron Pin  
 Prepared by: James E. Ross  
 Conway, Ark.